



# DESIGN GUIDELINES

## ABSTRACT

Detailed Standards for Future Re-Image, Remodel, Expansion or Reconditioning of Facilities

DEPARTAMENTO DE LA  
**FAMILIA**

ADMINISTRACIÓN PARA EL  
CUIDADO Y DESARROLLO  
INTEGRAL DE LA NIÑEZ



## Guide Purpose

The purpose of this guide is to provide a standardized manual to the Grantee and their Delegate Agencies, from the beginning through the end, when the program administration decides to develop an improvement or remodel construction project.

Is a facilities, interiors and exteriors, basic design guide applicable to Head Start / Early Head Start Program.

## Construction goals

The Head Start Program construction goal is to provide a facility where the children, their families and the community receive a high-quality service. Facilities that provide healthy and safe environment to satisfy the needs of the children, their families, the staff, volunteers, community agencies and program administration.

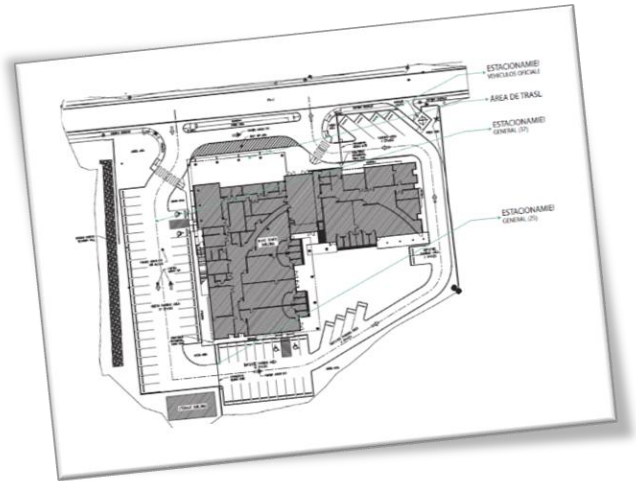
Our, the designer, goal is to develop a design of environments that allows the teachers and teachers aids to focus on children learning and development; peaceful and enjoyable environments to rise the interest of involvement of the families and caregivers; spaces responsive to cultural and religious preferences. Design and built to show and demonstrate the high level of commitment of the Grantee and Delegate Agencies to provide appropriate centers, well planned and beautiful, whose appearance and functionality raise the value and attractiveness of the program offer to the community. Design through a child perspective, sensitive to a child height and focused on the experience to which we will expose them for their development and learning. Appropriate in space size, considering adult/child ratio, storage space and daily activities. Build with height quality materials, cost effective constructions and operation and accessible to special needs community



## Design process

Delegate Agency must decide which are going to be the scope of the construction work to be done (re-image, remodel, expansions o reconditioning) based on these factors:

- Need
- Available space
- Budget
- Time for completion



| RE-IMAGE   | REMODEL  | EXPANSION  | RECONDITION   |
|--|--|--|---|
| <ul style="list-style-type: none"> <li>• Same structure</li> <li>• Same site</li> <li>• Same space distribution</li> </ul> | <ul style="list-style-type: none"> <li>• Same structure</li> <li>• Same site</li> <li>• Modifications of space distribution</li> </ul> | <ul style="list-style-type: none"> <li>• Modification to add space</li> <li>• Change space distribution</li> </ul> | <ul style="list-style-type: none"> <li>• Renovation of existing structure, usually a facility for other uses rather the HS</li> </ul> |

In the following pages you will find a useful tool to develop the plan and establish a scope of work that satisfied the needs in compliance with state and municipal laws, applicable regulations and, construction, safety codes; these include but are not limited to:

- Uniform Federal Accessibility Act (UFAS)
- International Building Code 2020 (IBC 2020) or current
- American with Disabilities Act (ADA) 2010 / American with Disabilities Act Architectural Guidelines (ADAGA)
- Historic Preservation Act (if applicable)
- Permits and licenses (Single Business Portal, OGPe)
- Individual with Disabilities Education Act (IDEA)
- Head Start Performance Standards 45 CFR 1304
- Head Start Design Guidelines (HSDG)

## Development Core Values

The scope must be focused on Compliance, Value and Service.



### Compliance

Centers must comply with applicable guidelines, laws, codes, and regulations.

### Value

Design should enhance the presence of the facility and ensure the integration of the space with the Parent, Family, and Community Engagement (PFCE) Framework

### Services

The design must project the high level of commitment that the Head Start Program has to provide appropriate, efficiently planned and beautiful centers; whose appearance and functionality promote participation, support recruitment and enrollment retention.

# Design Check List — Compliance

## Center services option



### Head Start

- Pre-schooler
  - 25” -40” average children height
  - 37-to-60-month years old
- Typical classroom capacity
  - 15 to 20 children
  - 2 or 3 adults



### Early Head Start

- Infant and toddlers children
  - 18 - 22” average children height
  - 0 – 18 month years old (infant)
  - 18 – 24 month years old (young toddlers)
  - 24 – 36 month years old (older toddlers)
- Environmental capacity
  - 8 children
  - 2 adults

## HS Classroom

| Enrollment | SQF per Classroom Usable Space |             |             |
|------------|--------------------------------|-------------|-------------|
|            | Minimum required               | Recommended | Preferred   |
| 15         | 630                            | 756         | 900         |
| 16         | 665                            | 798         | 950         |
| <b>17</b>  | <b>700</b>                     | <b>840</b>  | <b>1000</b> |
| 18         | 735                            | 882         | 1050        |
| 19         | 770                            | 924         | 1100        |
| 20         | 805                            | 966         | 1150        |

## EHS Classroom

|   |     |     |     |
|---|-----|-----|-----|
| 8 | 715 | 825 | 935 |
|---|-----|-----|-----|

**Usable floor space excludes floor area that is used for:**

- Circulation (e.g., walkways around the activity area);
- Classroom support (e.g., staff work areas and activity equipment storage that may be adjacent to the activity area);
- Furniture (e.g., bookcases, sofas, lofts, block corners, tables and chairs);
- Center support (e.g., administrative office, washrooms, etc.)









## HS Bathroom

- Bathrooms finish:
  - Wall tile 12" x 24", White, horizontally installed
  - Decorative accent 3" x 12", match pallet color

| Enrollment        | Bathroom per classroom                |                           |
|-------------------|---------------------------------------|---------------------------|
|                   | Child<br>(One must be ADA compliance) | Adult<br>(ADA compliance) |
| 15                | 2                                     | 1                         |
| 16                | 2                                     | 1                         |
| 17                | 2                                     | 1                         |
| 18                | 2                                     | 1                         |
| 19                | 2                                     | 1                         |
| 20                | 2                                     | 1                         |
| EHS Bathroom<br>8 | 1                                     | 1                         |

## EHS Bathroom

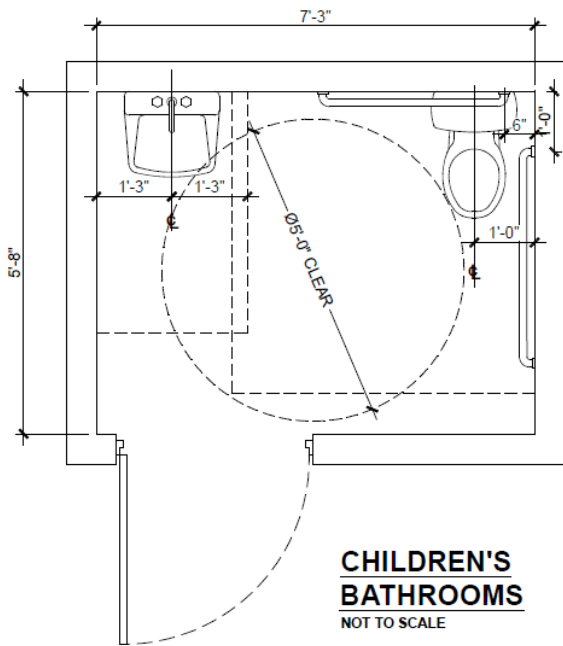
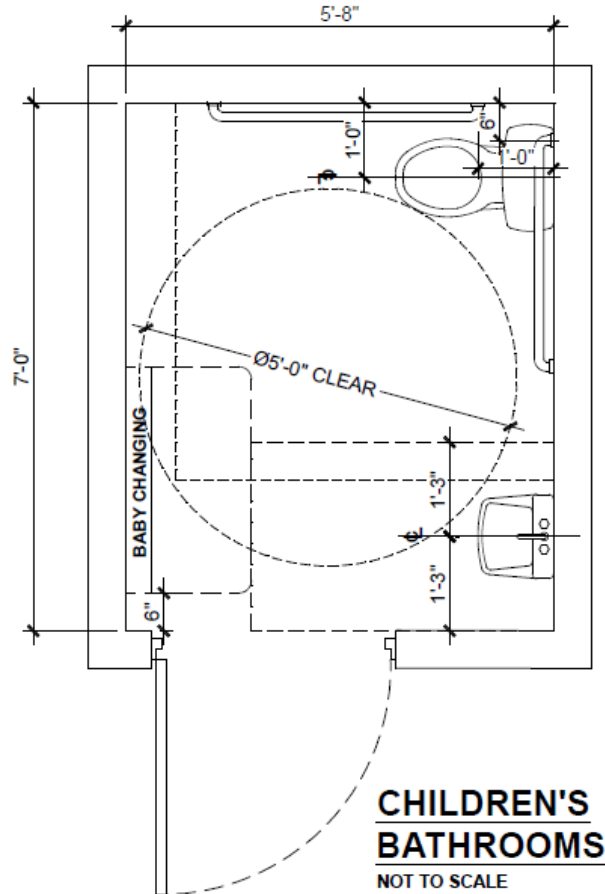
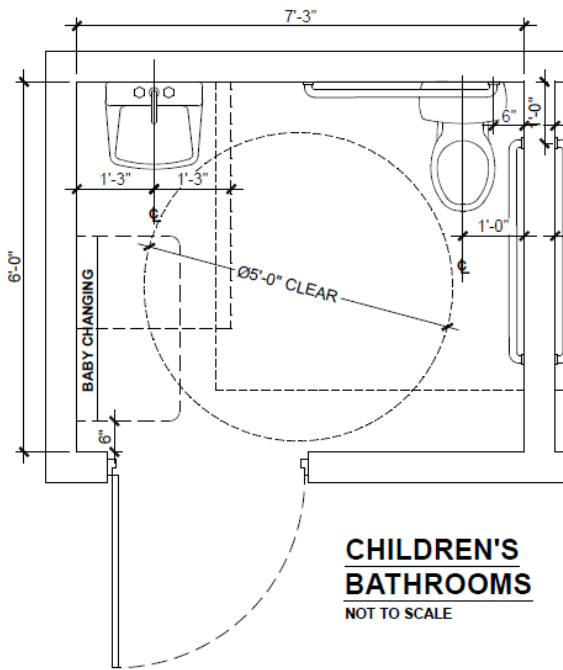
### ADULT BATHROOM

If the facility does not allow 1 adult bathroom per classroom:

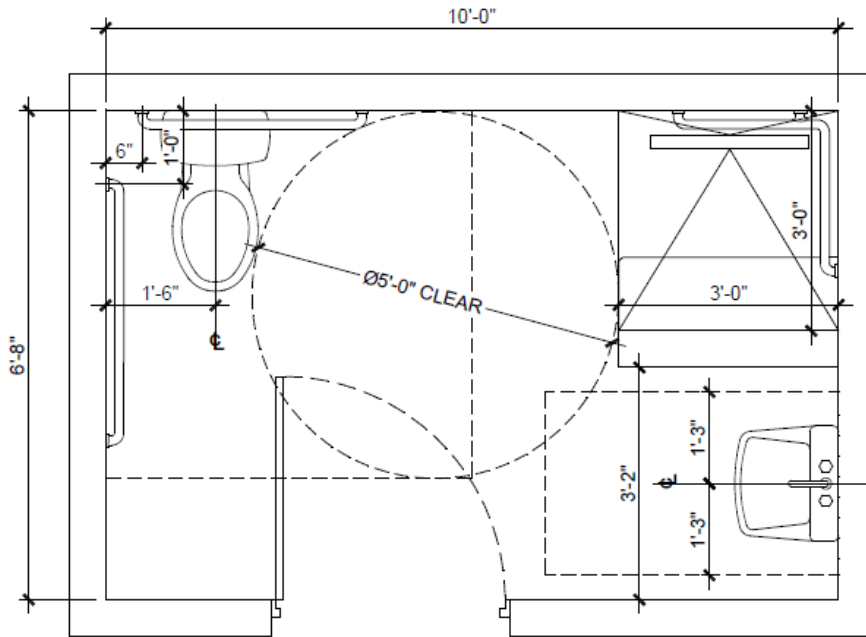
- Must have accessible bathrooms ADA compliance. If there is more than one accessible bathroom at least one of the must be ADA compliance.

### CHILDREN BATHROOM

- Toilet – 11”H
  - Not required for infant but recommended
- Sink – 22”H / 16”D
- Diaper changing Station – 36”H
  - Separated from sleeping, playing and eating areas
  - With ladder
  - Washbasin integrated or arm reachable
  - Sufficient and accessible space to store belongings and supplies
  - Provide Visibility
  - Provide Privacy
- Keyless lock – 42”– 48”H

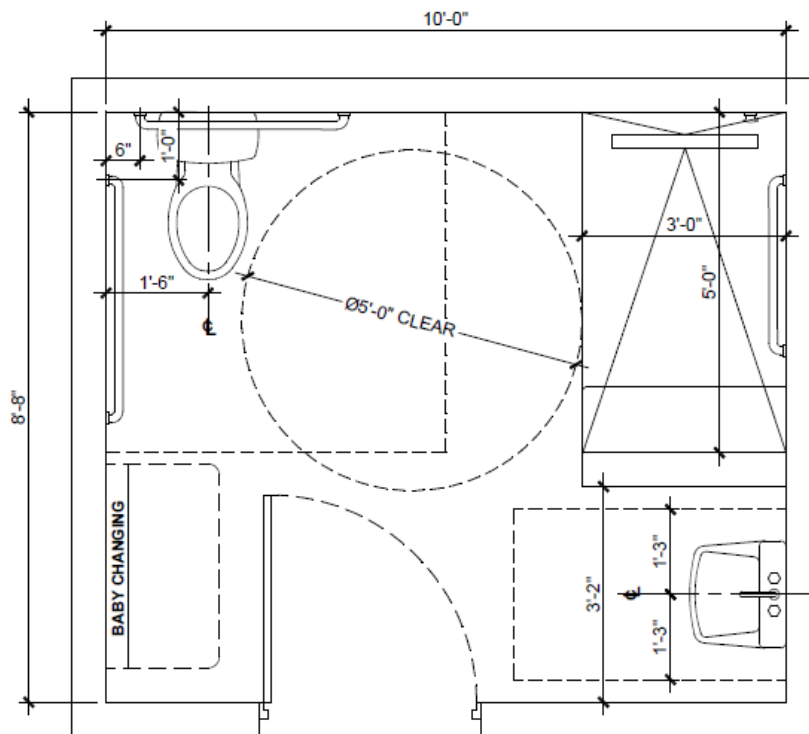


**CHILDREN BATHROOM**

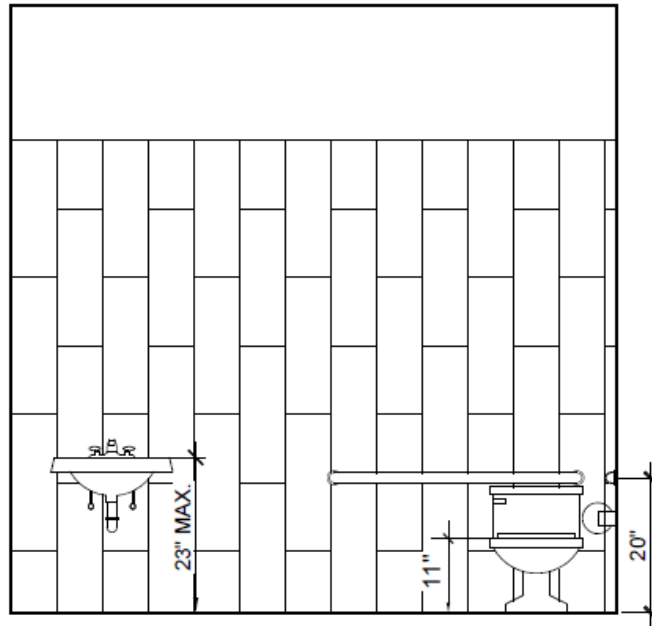
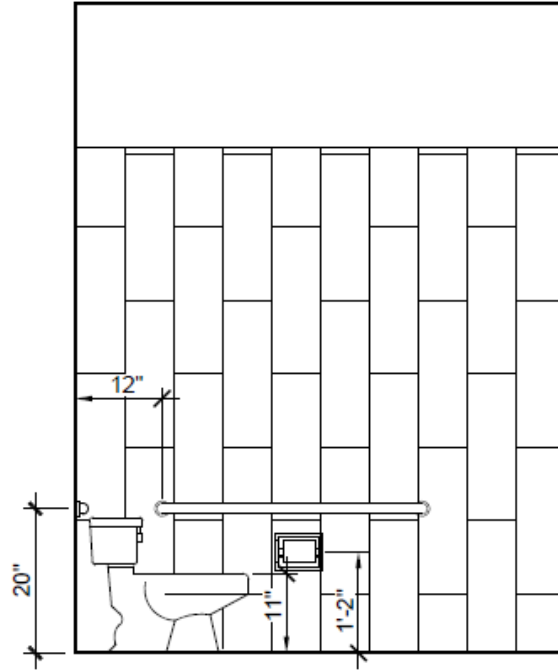


**ADULT'S BATHROOMS**  
NOT TO SCALE

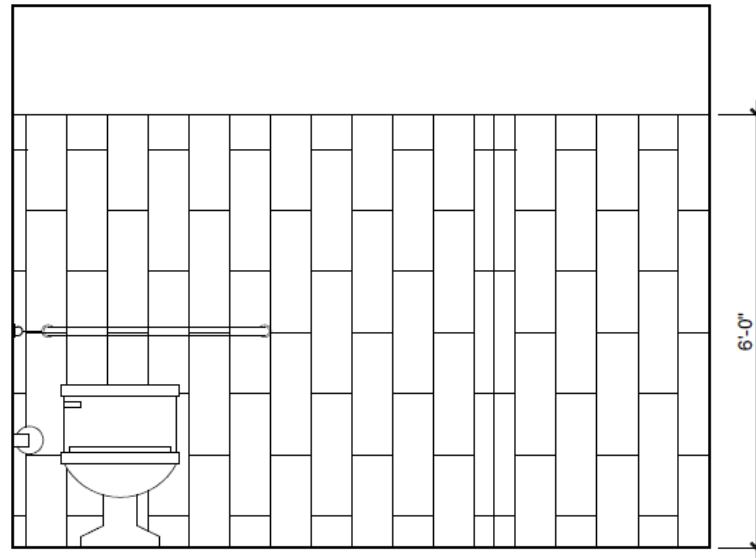
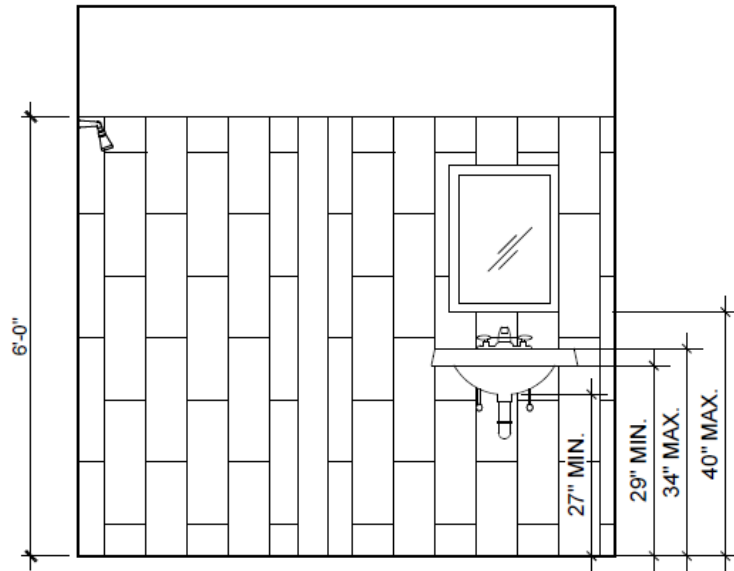
**ADULT'S BATHROOM**



# Elevation Child's Bathroom

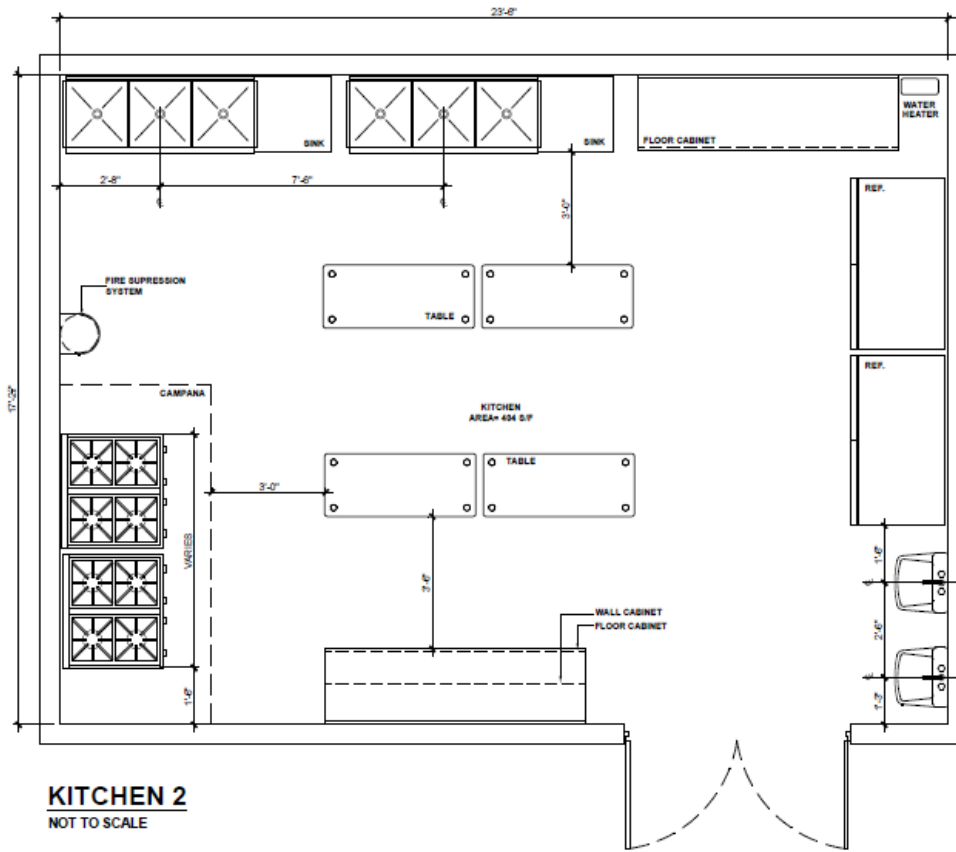
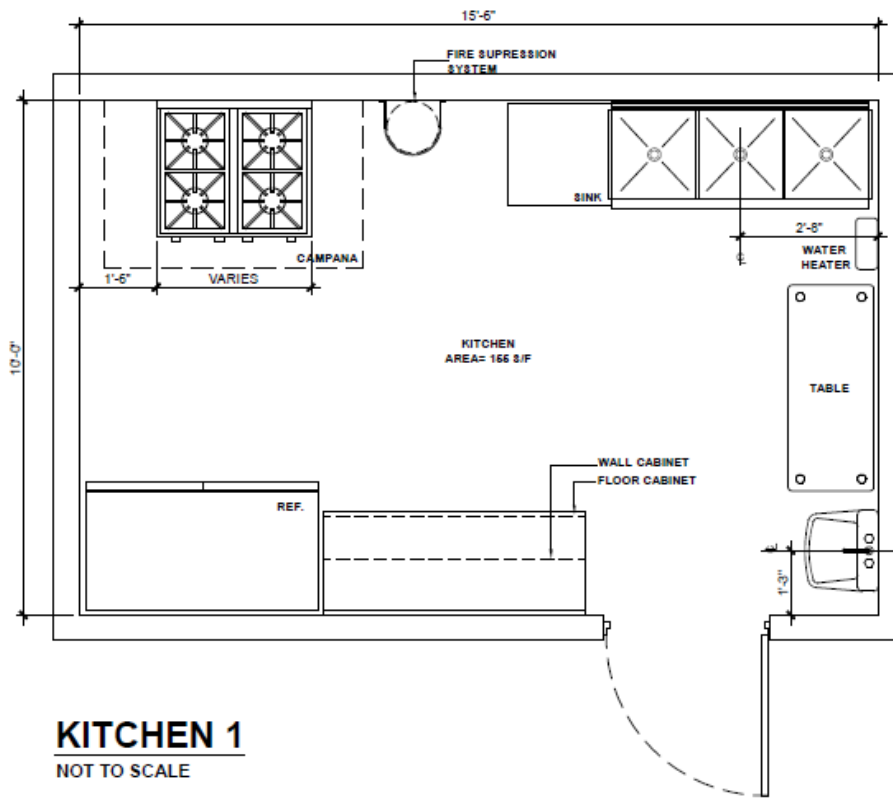


# Elevation Adult's Bathroom



## Kitchen

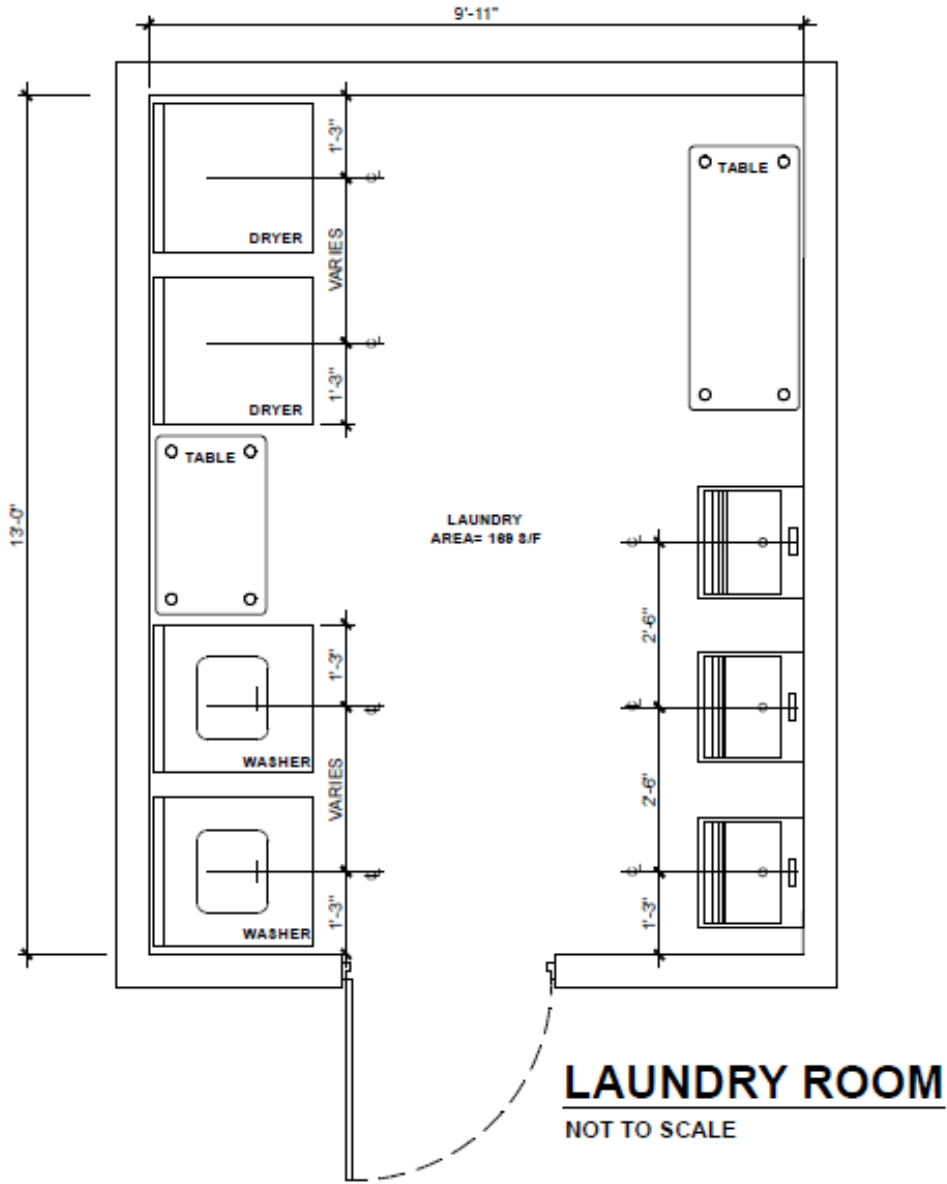
- Stove with exhaust fan and fire suppression system.
- Fridge and Freezer
- Three compartment sink with hot water
- Solid interceptor (grease trap)
- Sinks with hot water
- Water heater
- Dishwasher
- Microwave
- Cabinets and service tables
- Table for appliances
- Good natural or artificial ventilation
- Food storage space
  - Epoxy covered racks for food storage
  - Platform to store water bottles
  - Desk with chair
  - File cabinets
  - Cabinet for toxic and disposable
  - Natural or artificial ventilation
  - Preferably with direct access to the outside
- Gas enclosure - will depend on the stove - outside
- Enclosure for garbage containers -outside
- Loading area or access for delivery





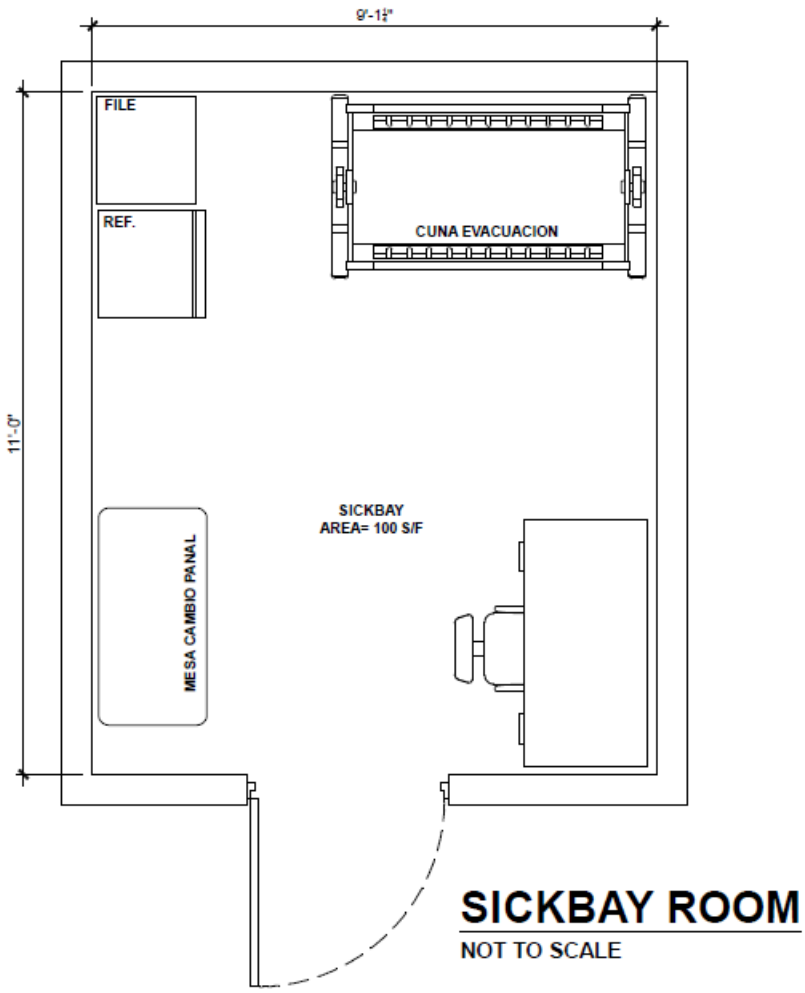
# Laundry room

- Required in EHS (applies to HS resilient centers)
- Washer and dryer
- Storage/ Shelve area dirty clothes / clean clothes
- Toxic storage area



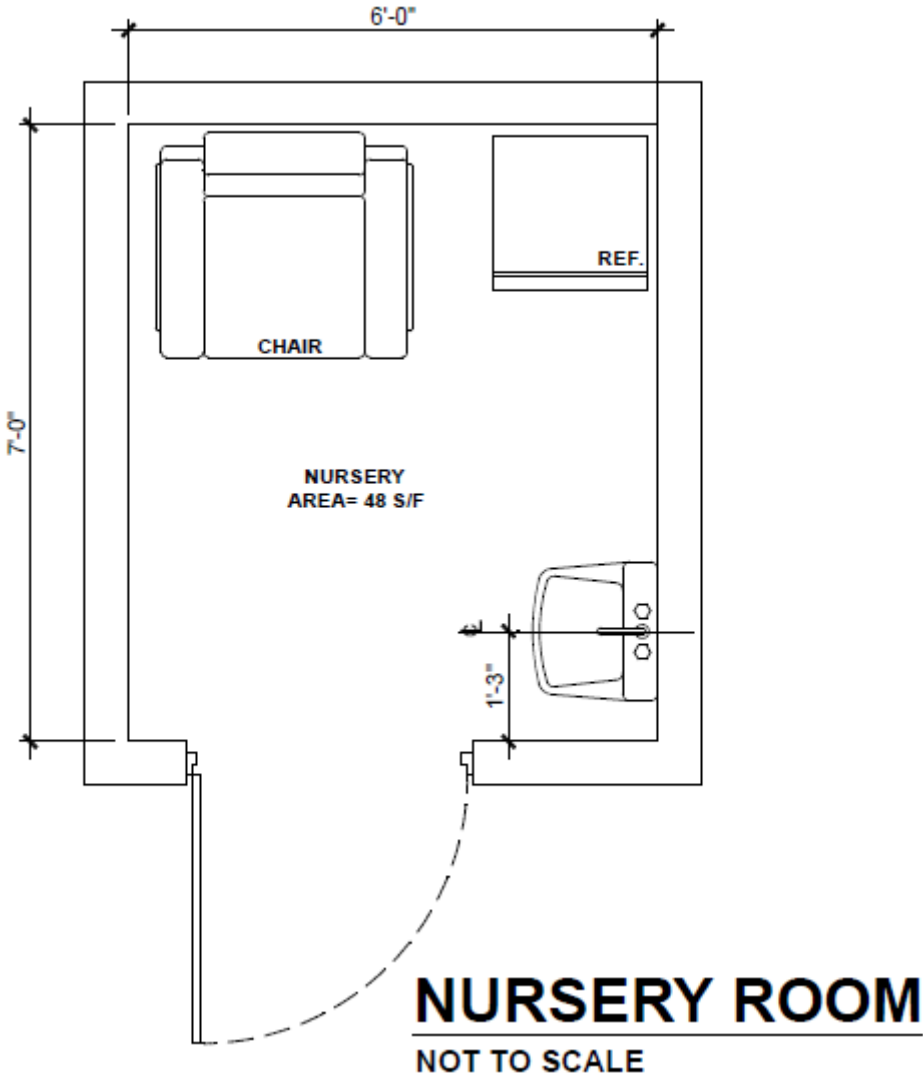
# Sickbay

- Required in EHS (applies to HS resilient centers)
- Crib
- Diaper changing station
- Desk and chair
- File cabinet
- Refrigerator to store medicament
- Scale for infants and toddlers



# Nursing room

- Rocking chair
- Small fridge
- Radio or TV
- Sinks with hot water

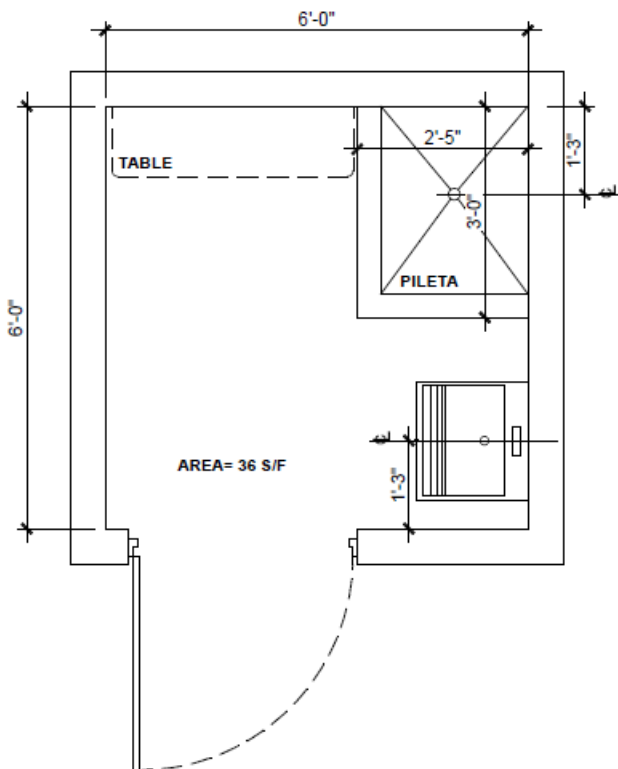


## Service room

- Sink (pileta/fregadero)
- Mop sink
- Storage area for cleanser / other toxic product (not accessible to children and spill prevention)

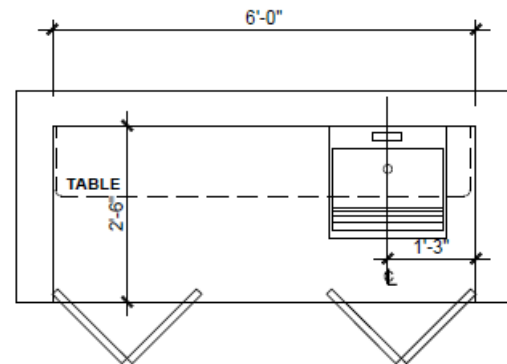
## Toy Sanitation area

- Sink (pileta/fregadero)
- Shelves for dirty toys and clean toys
- Separated from the service room



## MAINTENANCE ROOM

NOT TO SCALE

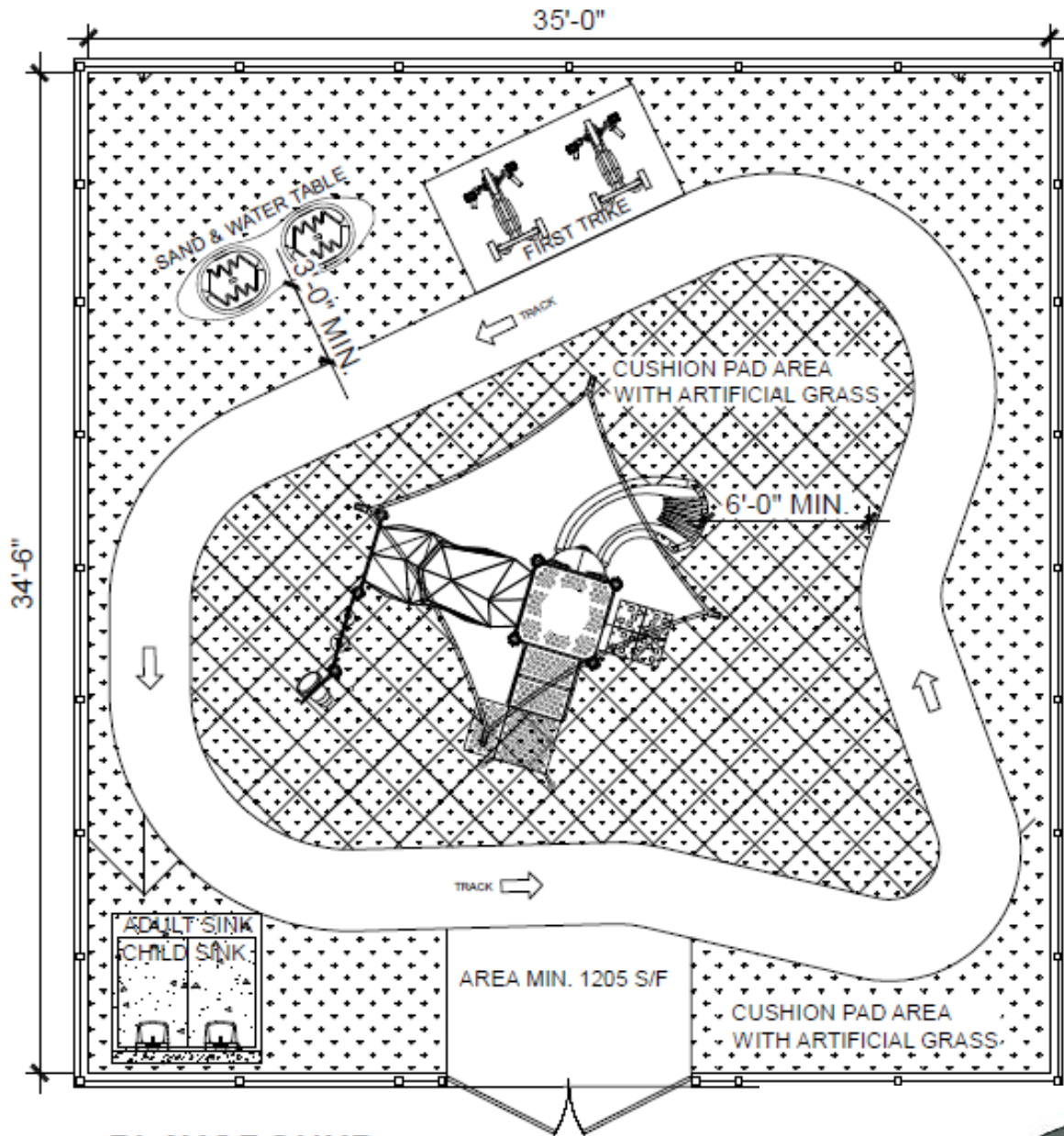


## MAINTENANCE CLOSET

NOT TO SCALE

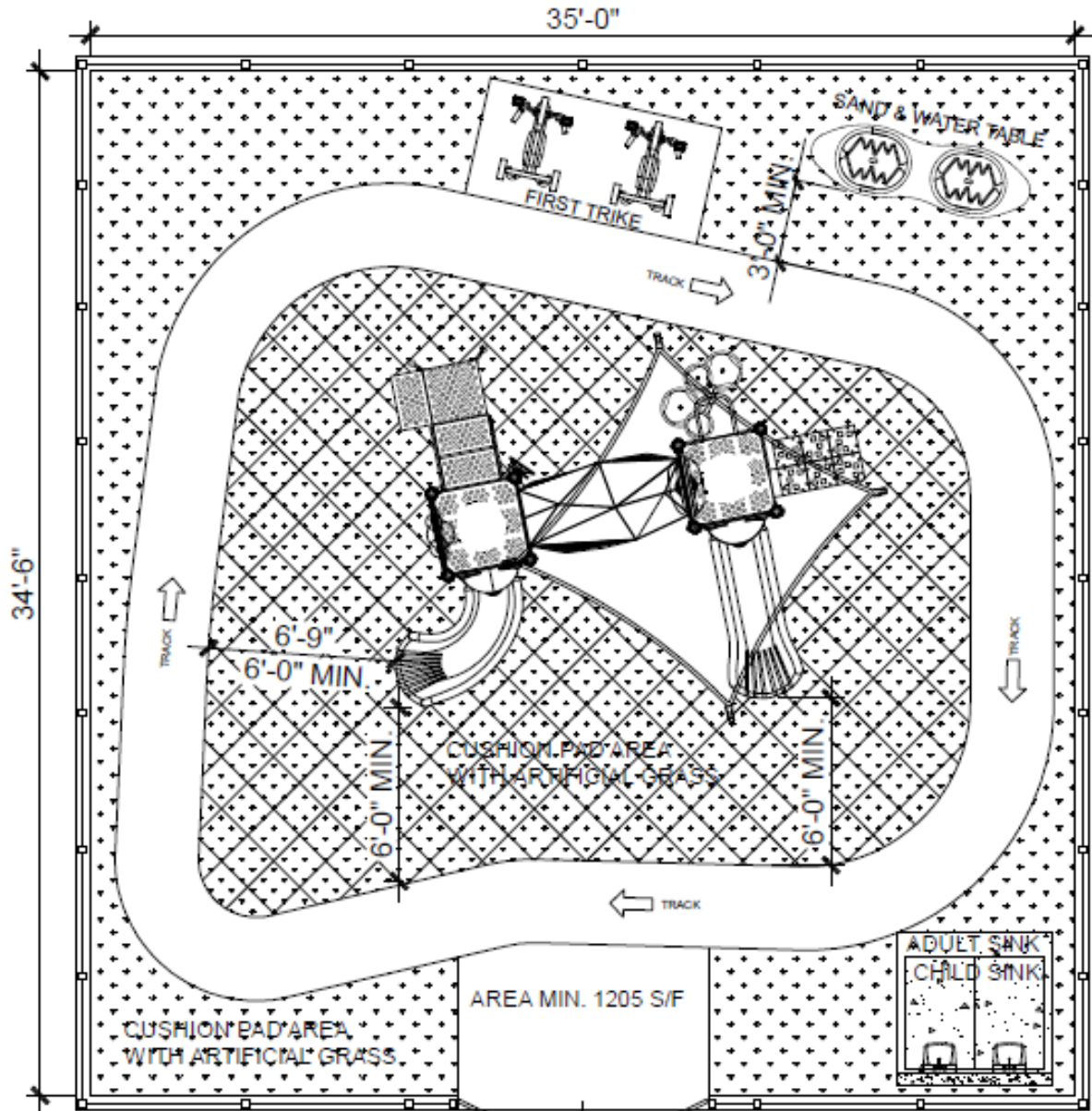
## Playground

- Minimum space per child -75 sqf
- Minimum playground area – 1205 sqf
- Minimum area per activity - 8.1 sqf
- Minimum 50%. of the activity area in the patio exposed to the sun vs. shaded areas
- Shock absorbing material (consumer product safety commission guidelines)
- Storage area
- Seating area
- Avoid Blind Spots
- EHS considerations:
  - In the case of interior playground, it must be well lit with LED luminaires, color "Warm White, dimmable".
  - Shock absorbing material, soft touch finish.
- Additional consideration based on children's age – Infant, Toddlers , Pre-schoolers
- Playground activities areas:
  - Sand and Water
  - Music
  - Reading
  - Dramatic games
  - Climb, balance, jump and slide (fall buffers)
  - Locomotion
    - Areas must be 60” for movement in both directions unless specified in one direction only (minimum 36”).
- The incorporation of Green Patios, recommended
  - Check list of non-toxic permitted plants, Appendix G of the HSDG



**PLAYGROUND**  
NOT TO SCALE

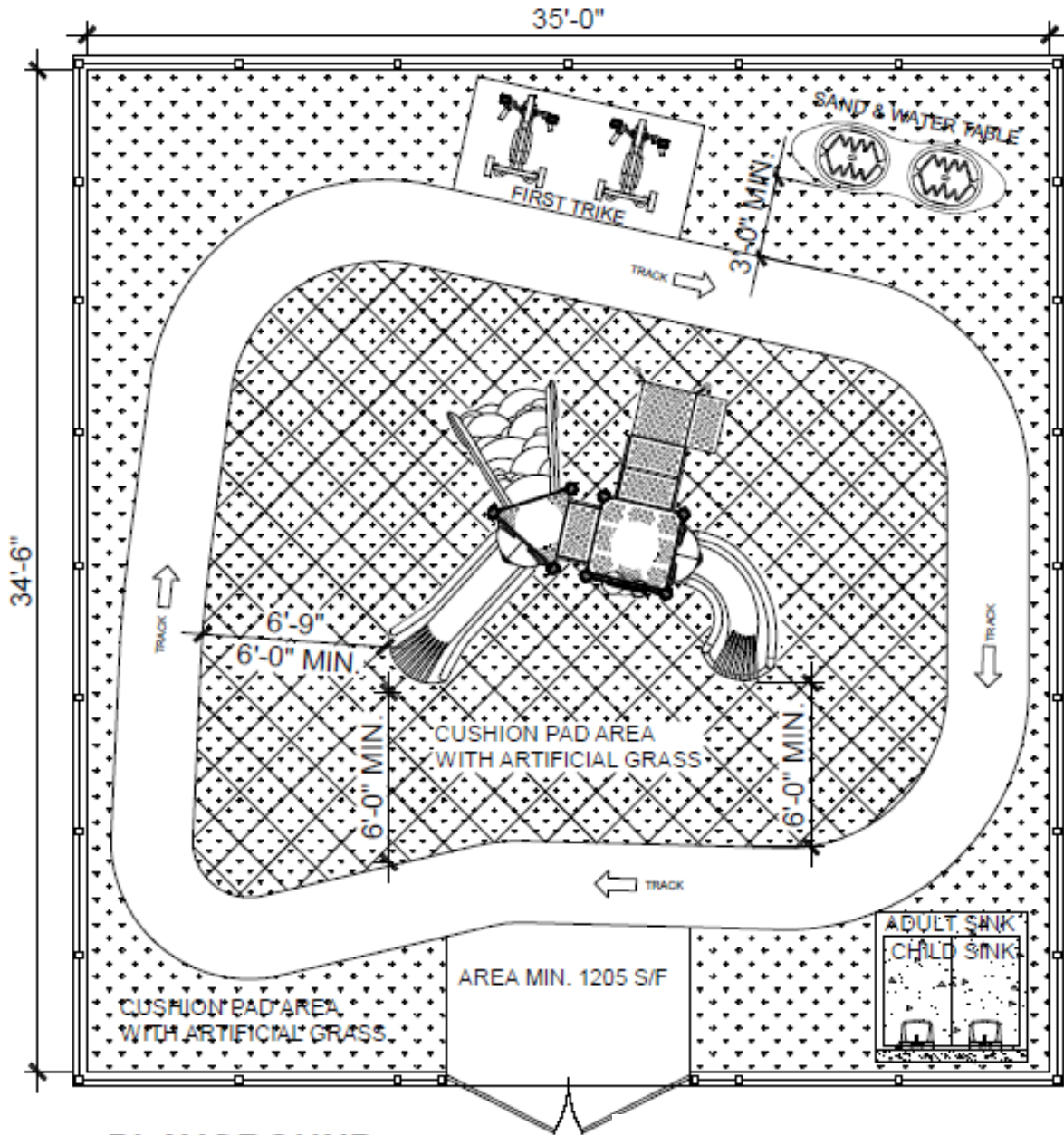




**PLAYGROUND**  
NOT TO SCALE

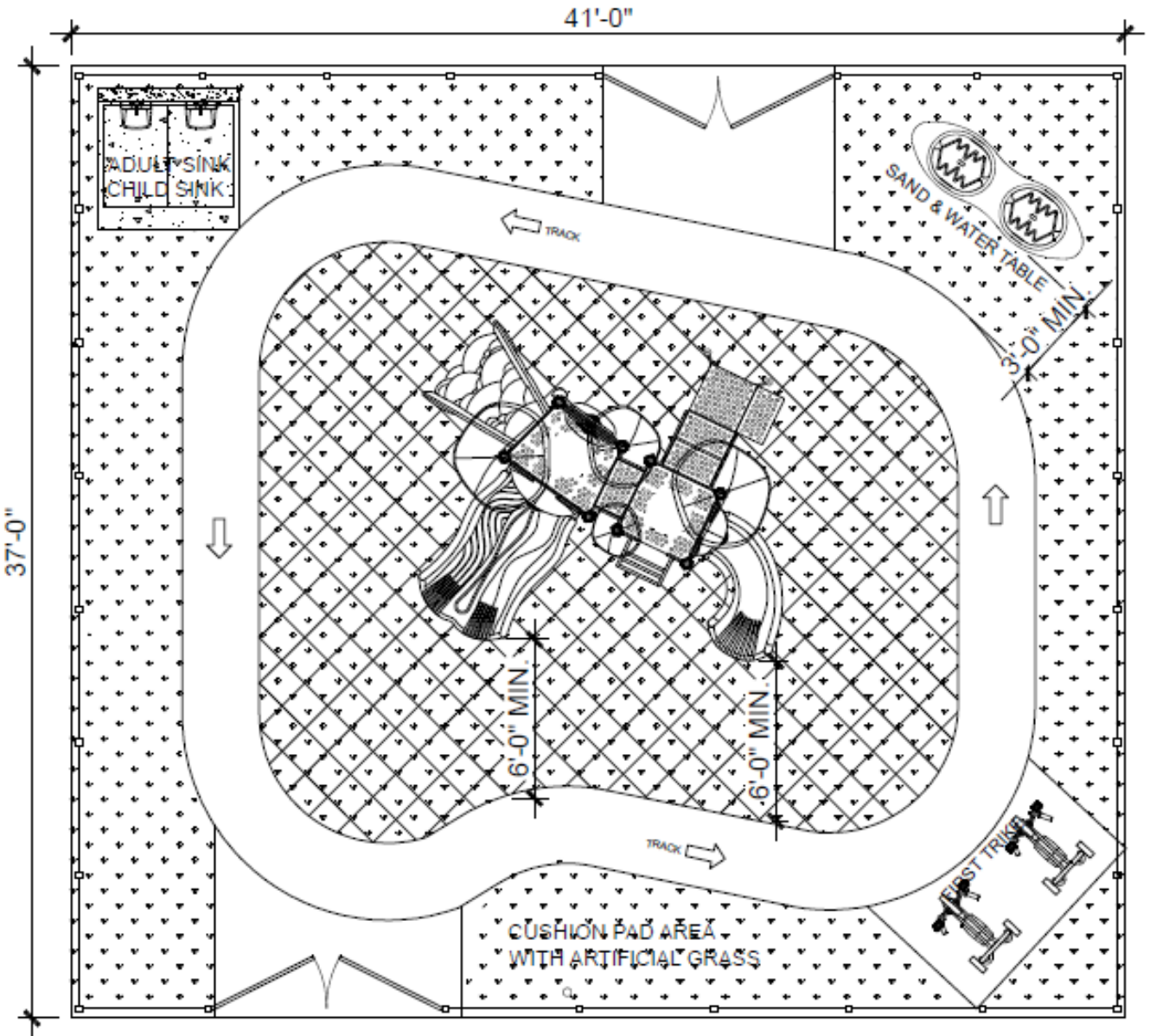






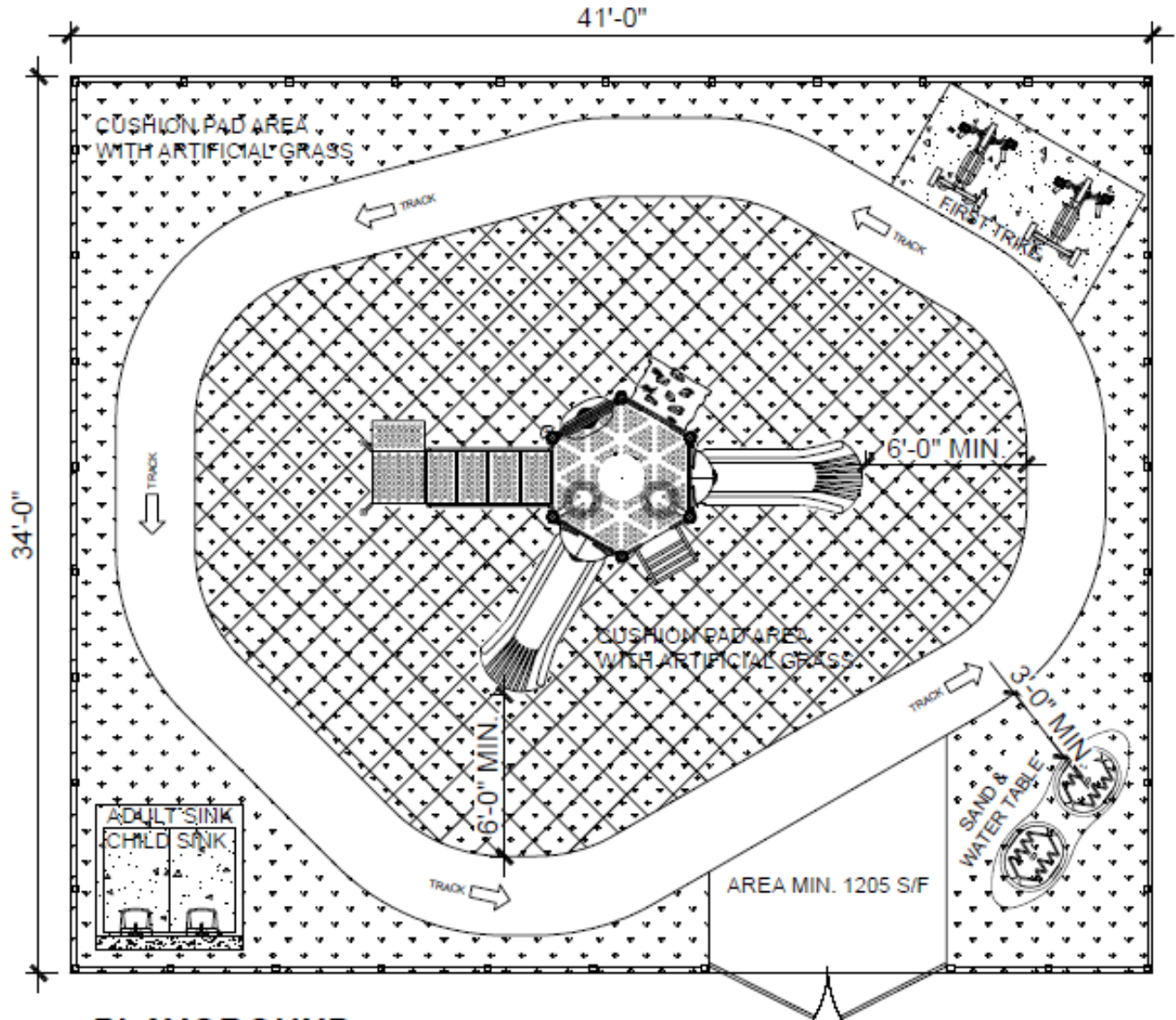
**PLAYGROUND**  
NOT TO SCALE





**PLAYGROUND**  
NOT TO SCALE





## PLAYGROUND

NOT TO SCALE





## Fence

- Perimeter - 6' (6'-6" regulation), if the patio is in a high-traffic or dangerous area, 8' by variation, ensuring the easements of views and lights are approved.
- Separation gaps no larger than 3"
- Maximum floor clearance 3"
- Rust free
- No sharp edges or points
- The separation, when it is made of tube and linked wire should not be greater than 2".
- Wood fences should have a smooth-touch, splinter-free finish.
- The separation of the wood should not exceed 3"
- To avoid climbing - not horizontal; base/top exception
- Locks must not project outwards
- Minimum two access points
- Trees without overhanging branches, prune to 6.5'
- Maximum railing height for climbing playground platform = 18" for infants, 36" for walkers, 4.5' for preschoolers
- A radius of 6' of free zone in devices with fall. Must not interfere with tricycles
- Provide shock absorbers for falls, it can be natural or artificial.

## Other general considerations

- Classroom must have visibility from the outside (ACTIVE SUPERVISION)
  - EHS environment- should provide visibility from one room to another
- Exterior doors conveniently located (no more than 100')
- Lock must be installed at 42"
- Minimum width of the doors 32", for those that have evacuation cribs 36"
- MINIMUM ONE ADA ACCESS PER ROOM OF 36".
- Smoke / Carbon Monoxide Detector (electrical)
- Emergency lamps
- Suppression system, when required by codes
- Lever mixers (ADA), although the guide establishes auto-interruption
- Sinks will require knee clearance (front approach), but this may vary if they are accessible from the side (side approach). ADA and ADAAG should be consulted.
- Ramps
  - 1:12 minimum
  - 1:16 recommended
  - 1:20 prefer
- Signs and signals for children at 36"-44" depending on age (40" average).
- Receptacles, switches, alarms and intercoms - 54"
- Grab bar will depend on the height of the toilet tank, two must be installed: rear and side (see guides).
- Entrance to the center of 5' - 8' wide, if it has a ramp it must have handrails
- Handrails on ramps and stairs (don't just consider OSHA)
- Stroller storage area (ideal)
- Waiting or reception area

**Other general considerations**  
**- Teachers**

- Private area for meetings with teacher or interdisciplinary team
- Private area to breastfeed (Law No. 427 of the year 2000, as amended)
- Parking (availability may be variable but in compliance with regulations, let's do an exercise)
- Aisles of easy and common access and movement
  - 36" minimum width in one direction
  - 48" minimum width in two directions
  - 60" high traffic areas
- Optimum visibility to the exterior of the facilities.

**Other general considerations**  
**- Administration**

- Kitchenette or lounge, separate from children's areas, for lunch, planning or rest
- Storage area for personal belongings and educational material (25% ideal).
- Private area for meetings with parents
- Classroom efficiently designed to allow organization and safety

If the scope of work for facility to be design include administration spaces:

- Sufficient office area to accommodate desk and chair, waiting chairs, files cabinets, basic office equipment, based on the occupant's needs.
- Room for meetings and training (ideal)

## Design Check List — Value and Service







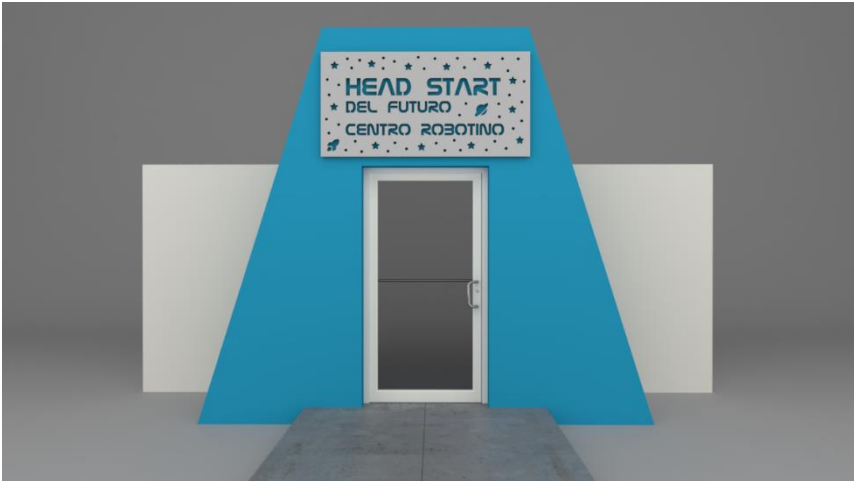
## Façade

- Approach
  - Entrance – Spaceship concept
    - Addition of volume as lobby space
    - Lay over geometric planes to enhance futuristic motive.
  - Lateral
    - When the structure provides an additive structural element, independent of the original structure, apply pattern with varying depths and linear vertical alternating rhythms using the selected color palette. This detail could also be applied on flat exterior walls
- Material
  - Casing bead
  - Foam Molding
  - Circular J Mold
- Paint - Select the exterior color paint from the following Décor package
  - Venus
  - Saturn
  - Mercury
  - Starburst
  - Earth

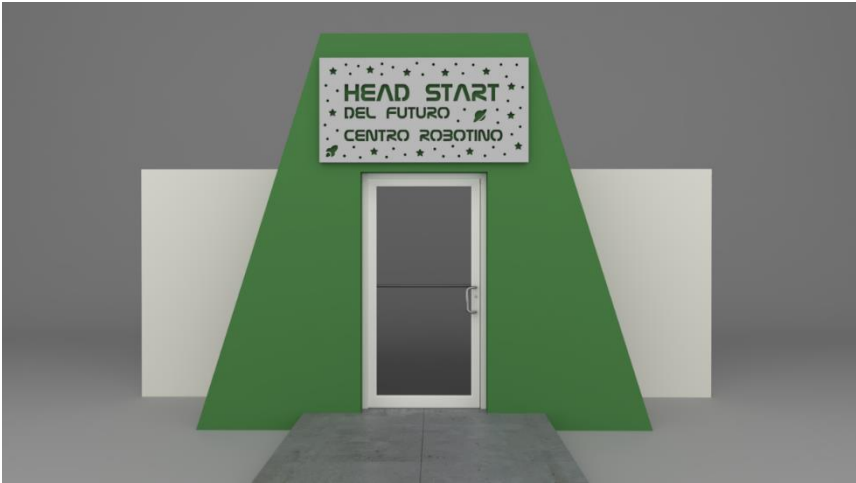
VENUS



SATURN



MERCURY



STARBURST



## Windows

- Trim existing windows
- Add square shaped window
  - 18" x 18", Fixed
  - Geometrical figure trim
- Material
  - Casing bead
  - Foam Molding
  - Circular J Mold







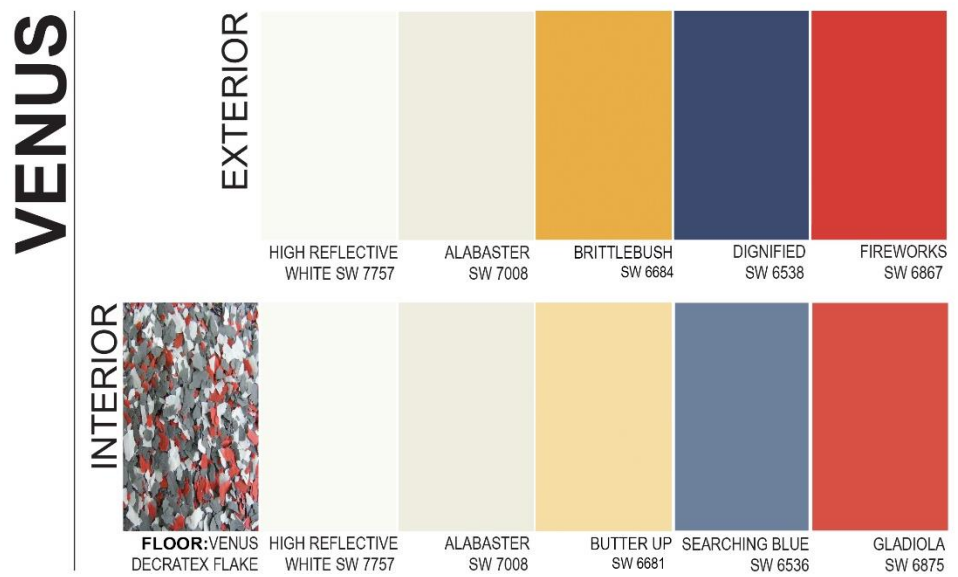


## Interior

- Select the interior color paint to match the exterior color paint selected.
  - Venus
  - Saturn
  - Mercury
  - Starburst
  - Earth
  
- All roof and walls surface, unless specified, to be finished:
  - Smooth plaster or resurfacer
  - Primer
  - Paint
  
- Floor finish including plinth
  - Decatrex flake

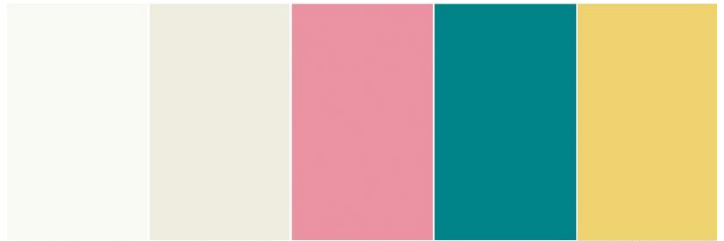
## Décor Package

### Color pallet themes



# SATURN

EXTERIOR

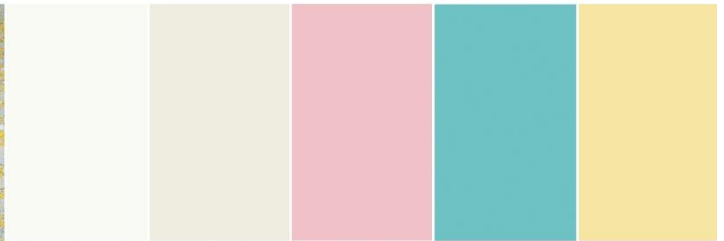


HIGH REFLECTIVE WHITE SW 7757    ALABASTER SW 7008    IN THE PINK SW 6583    GULFSTREAM SW 6768    FUNKY YELLOW SW 6913

INTERIOR



FLOOR: SATURN  
DECRATEX FLAKE



HIGH REFLECTIVE WHITE SW 7757    ALABASTER SW 7008    LOVEABLE SW 6590    MARINER VENETIAN YELLOW SW 6766    FUNKY YELLOW SW 6913

# MERCURY

EXTERIOR

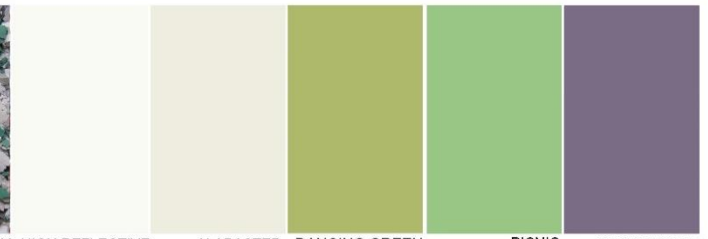


HIGH REFLECTIVE WHITE SW 7757    ALABASTER SW 7008    ELECTRIC LIME SW 6921    GRASSHOPPER SW 6733    PASSIONATE PURPLE SW 6981

INTERIOR



FLOOR: MERCURY  
DECRATEX FLAKE



HIGH REFLECTIVE WHITE SW 7757    ALABASTER SW 7008    DANCING GREEN SW 6716    PICNIC SW 6731    WOOD VIOLET SW 6557

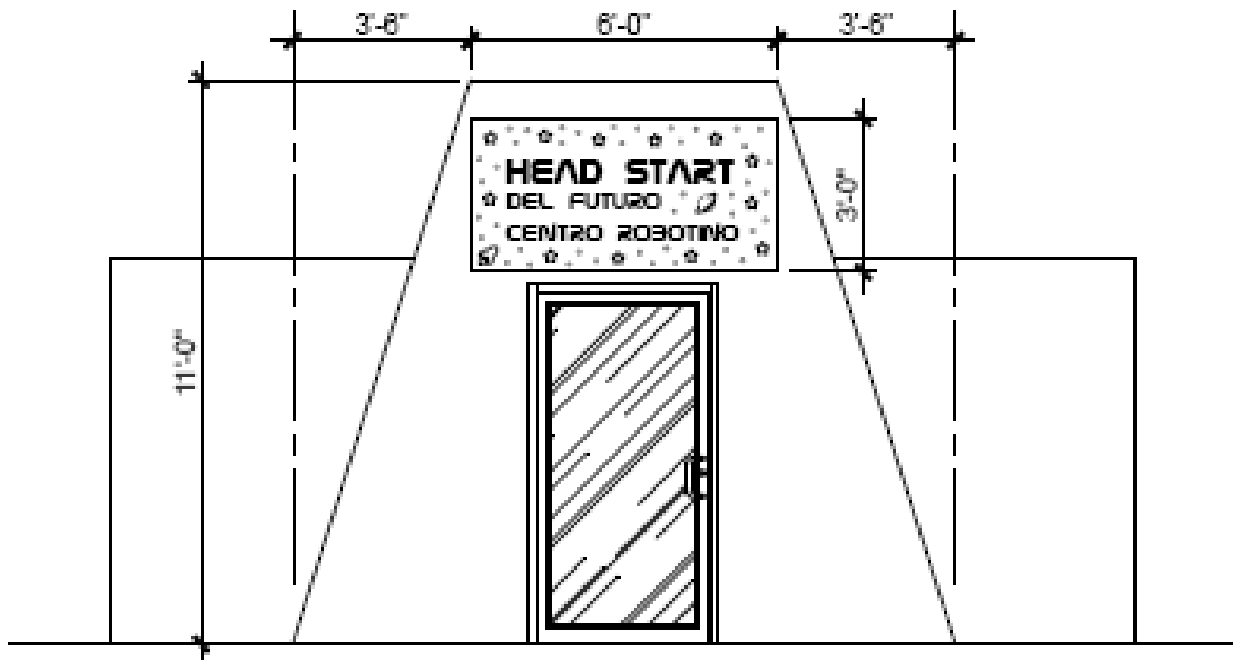
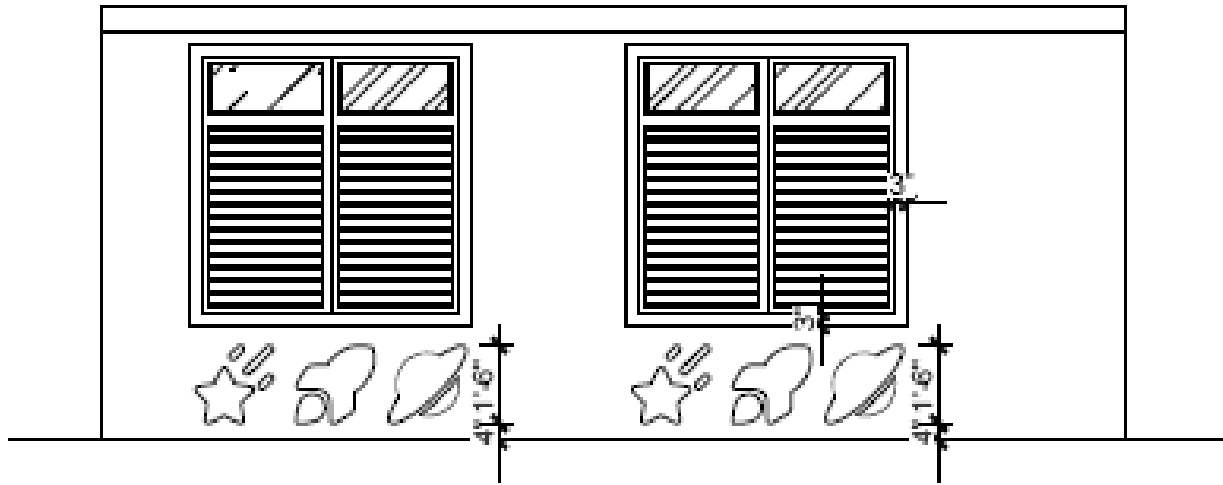
# STAR BURST

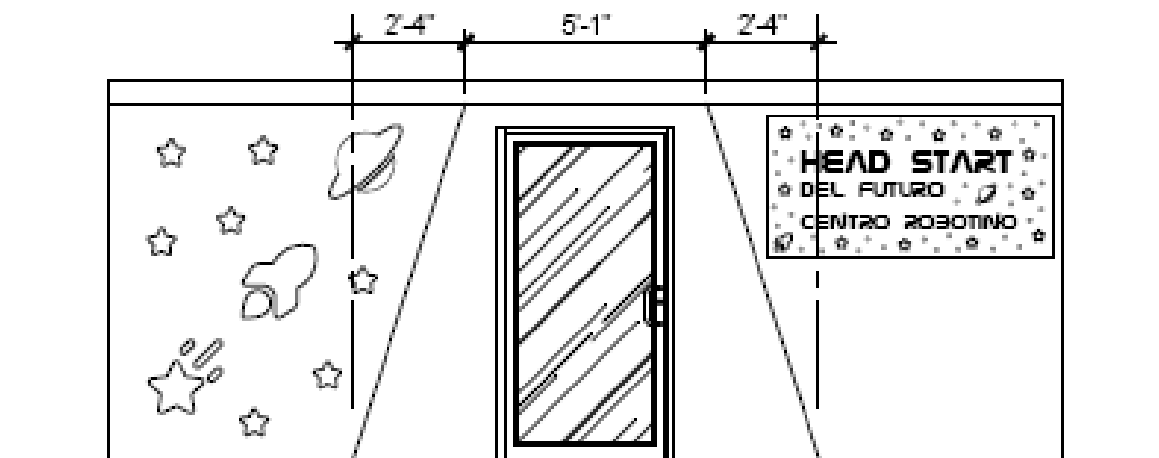
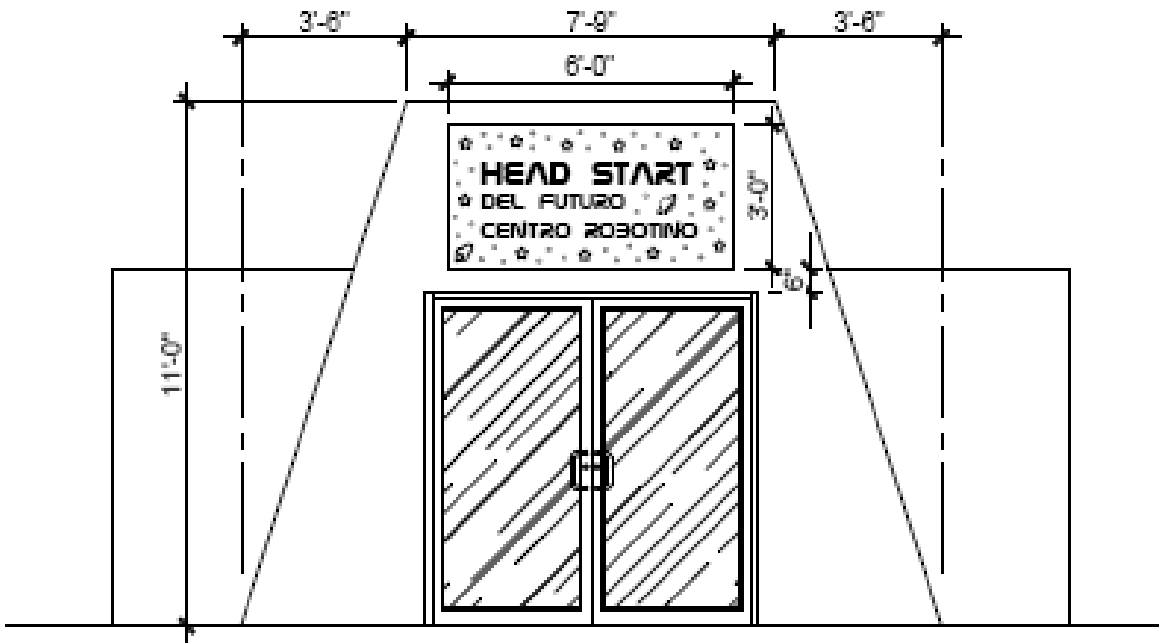
|                                      | EXTERIOR                         | ALABASTER<br>SW 7008 | MAYOR BLUE<br>SW 6795 | EROS PINK<br>SW 6860   | CENTER STAGE<br>SW 6920 |
|--------------------------------------|----------------------------------|----------------------|-----------------------|------------------------|-------------------------|
|                                      | HIGH REFLECTIVE<br>WHITE SW 7757 |                      |                       |                        |                         |
| INTERIOR                             |                                  |                      | MINOR BLUE<br>SW 6792 | IN THE PINK<br>SW 6583 | GLEEFUL<br>SW 6920      |
| FLOOR: STAR BURST<br>DECRA TEX FLAKE | HIGH REFLECTIVE<br>WHITE SW 7757 | ALABASTER<br>SW 7008 |                       |                        |                         |

# EARTH

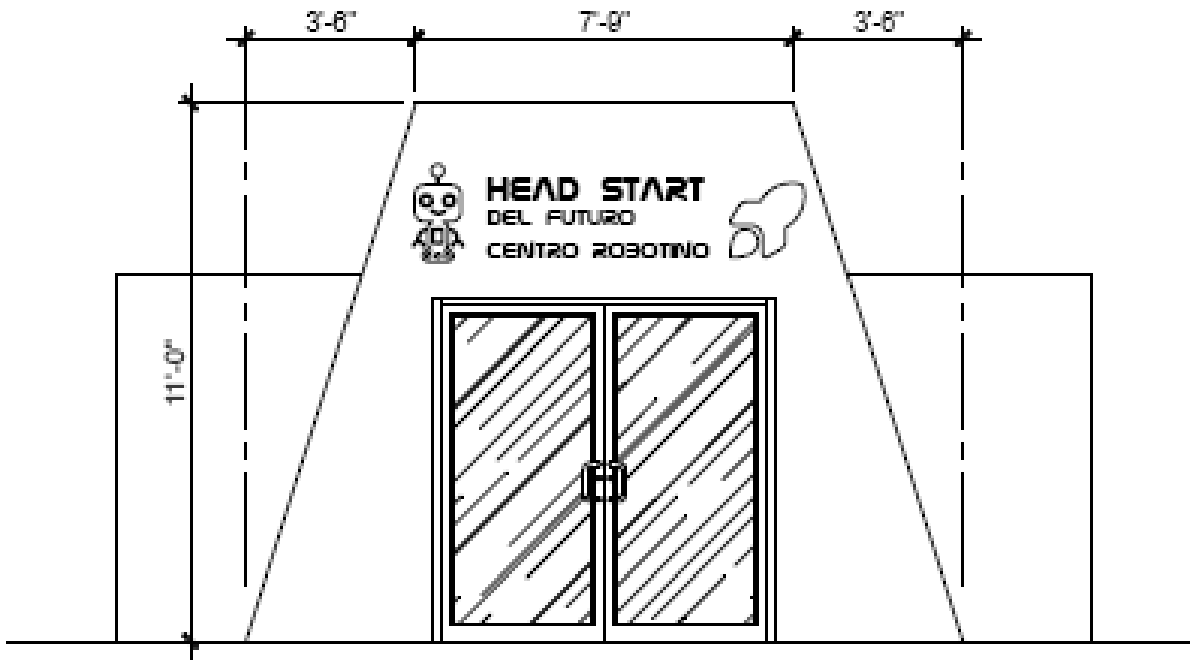
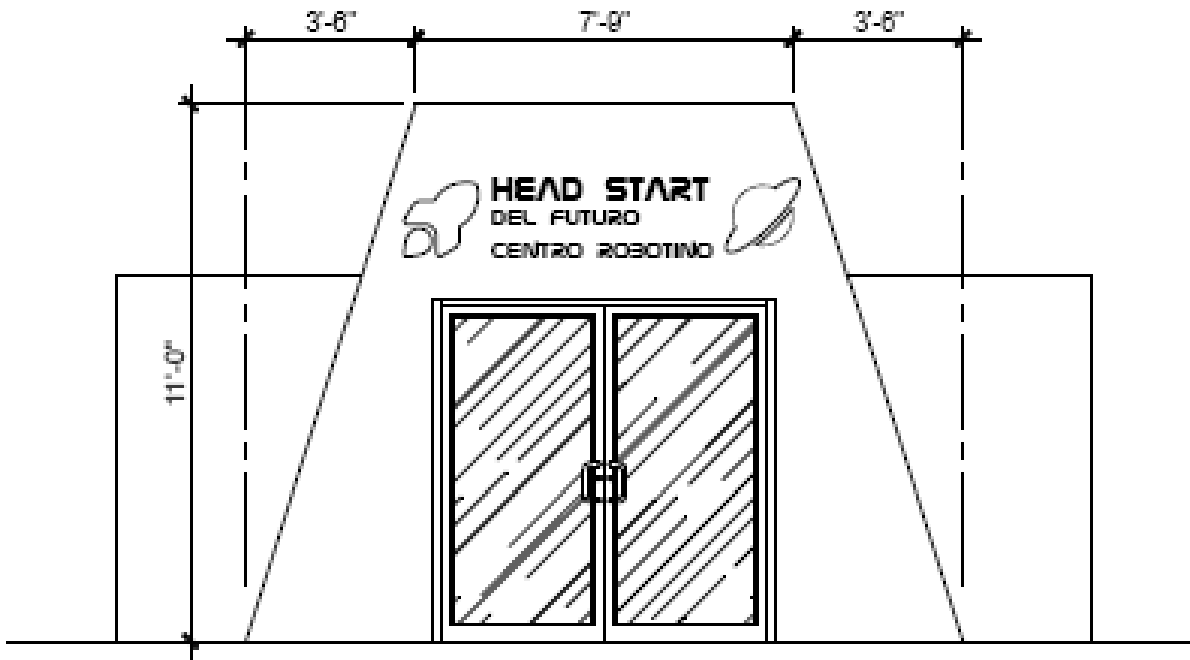
|                                 | EXTERIOR                         | ALABASTER<br>SW 7008 | OUTGOING ORANGE<br>SW 6252 | DAHLIA<br>SW 6816     | SALTY DOG<br>SW 9177 |
|---------------------------------|----------------------------------|----------------------|----------------------------|-----------------------|----------------------|
|                                 | HIGH REFLECTIVE<br>WHITE SW 7757 |                      |                            |                       |                      |
| INTERIOR                        |                                  |                      | AVID APRICOT<br>SW 6639    | GRAPE MIST<br>SW 6548 | ALEUTIAN<br>SW 6241  |
| FLOOR: EARTH<br>DECRA TEX FLAKE | HIGH REFLECTIVE<br>WHITE SW 7757 | ALABASTER<br>SW 7008 |                            |                       |                      |

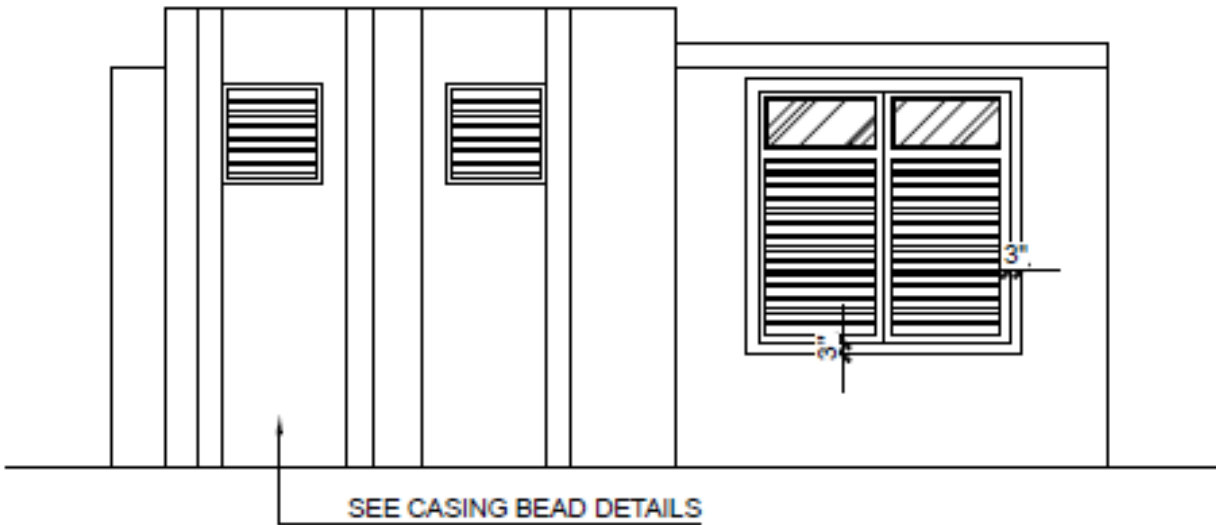
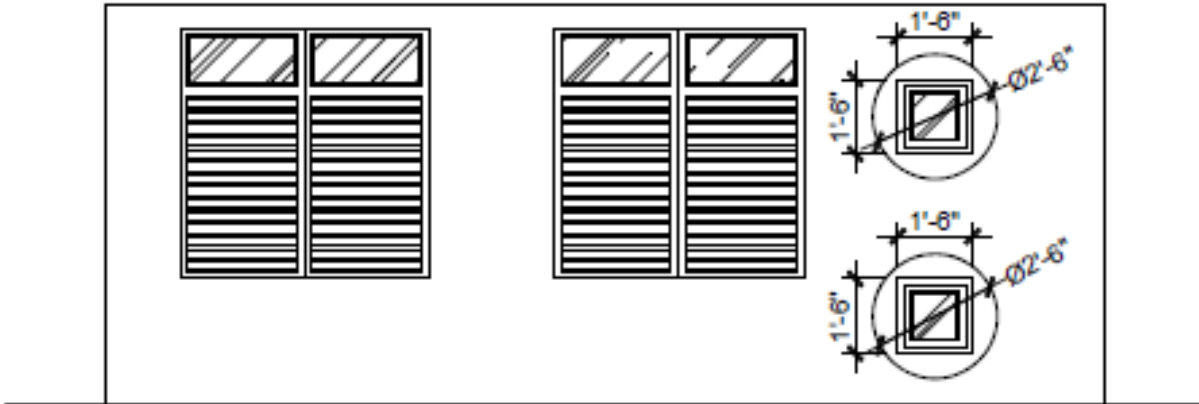
# ELEVATIONS

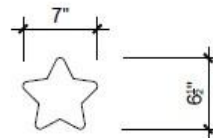
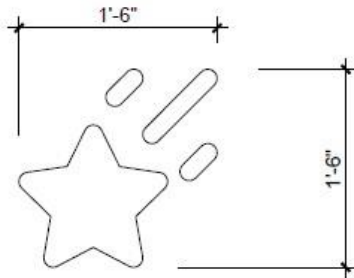
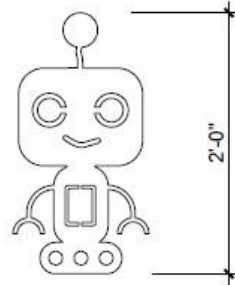
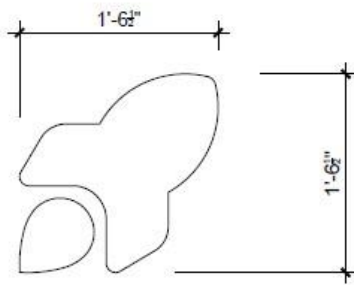
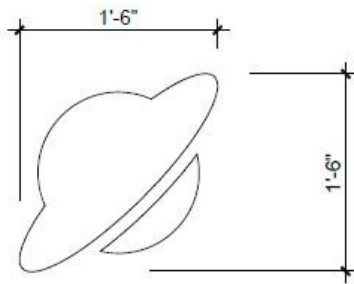


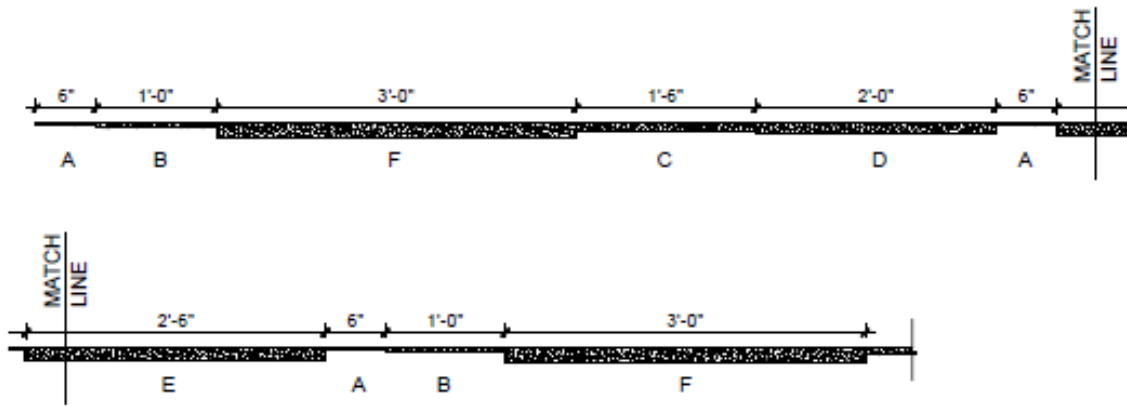




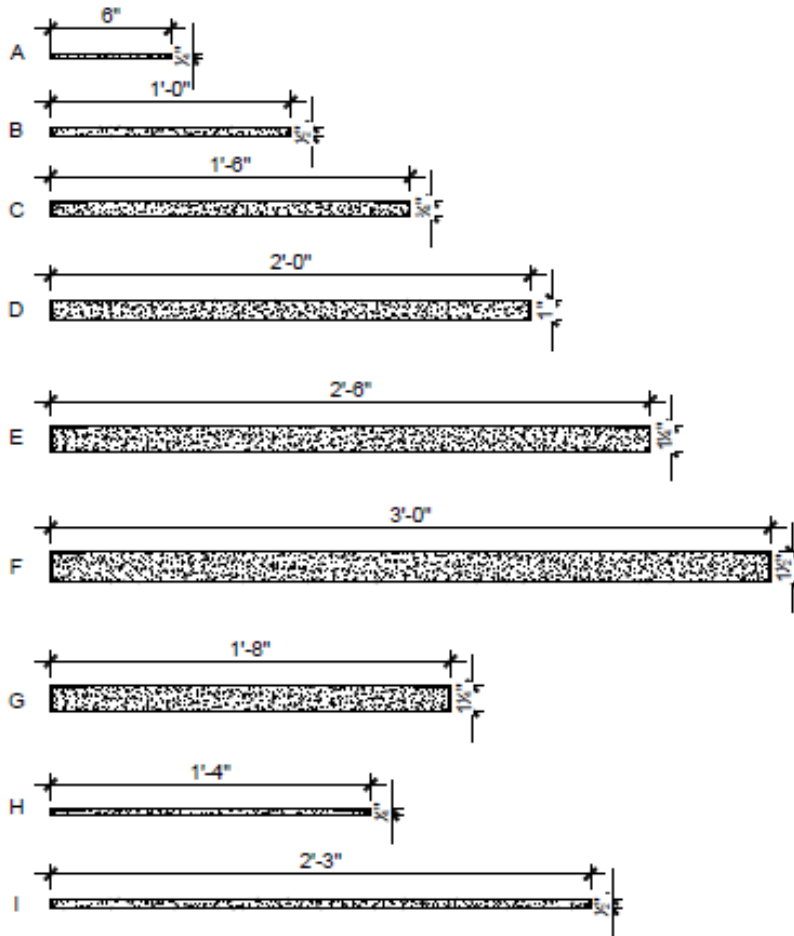








**TYPICAL SECTIONS OF CASING BEAD IN WALLS**



**CASING BEAD LEGEND DETAIL**

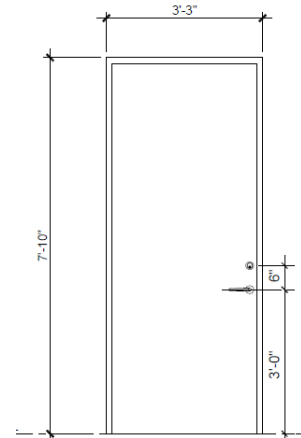
# Doors

## Exterior – Entrance

### Alternative 1

FLUSH ALUMINUM MORTISED LOCK WITH CLOSER AND DOOR STOP ANSI FUNCTION F-05 WATERSHIP. INCLUDE 2" X 6" ANODIZE ALUMINUM TUBE ON TOP AND 2" X 6" X 8' ANODIZE ALUMINUM TUBE FOR ONE SIDE.

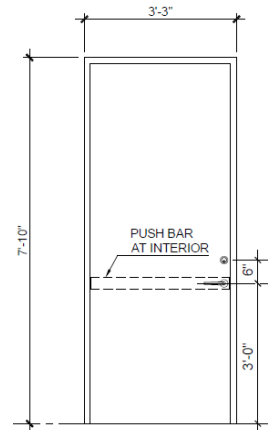
HARDWARE FINISH:  
MEDIUM DUTY SATIN CHROME



### Alternative 2

FLUSH ALUMINUM MORTISED LOCK WITH CLOSER AND DOOR STOP ANSI FUNCTION F-05 WATERSHIP. INCLUDE 2" X 6" ANODIZE ALUMINUM TUBE ON TOP AND 2" X 6" X 8' ANODIZE LUMINUM TUBE FOR ONE SIDE.

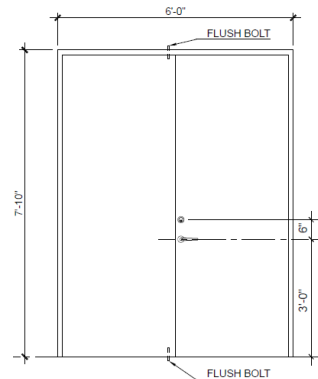
HARDWARE FINISH:  
MEDIUM DUTY SATIN CHROME



### Alternative 3

FLUSH ALUMINUM MORTISED LOCK WITH CLOSER AND DOOR STOP ANSI FUNCTION F-05 WATERSHIP. INCLUDE 2" X 6" ANODIZE ALUMINUM TUBE ON TOP AND 2" X 6" X 8' ANODIZE ALUMINUM TUBE FOR ONE SIDE.

HARDWARE FINISH:  
MEDIUM DUTY SATIN CHROME

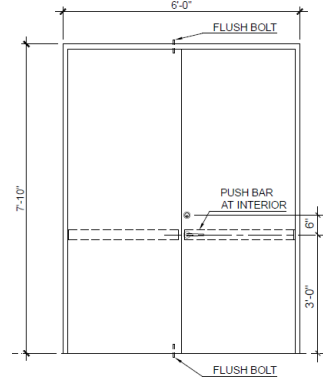


# Doors

## Alternative 4

FLUSH ALUMINUM MORTISED LOCK WITH CLOSER AND DOOR STOP ANSI FUNCTION F-05 WATERSHIP. INCLUDE 2" X 6" ANODIZE ALUMINUM TUBE ON TOP AND 2" X 6" X 8' ANODIZE ALUMINUM TUBE FOR ONE SIDE.

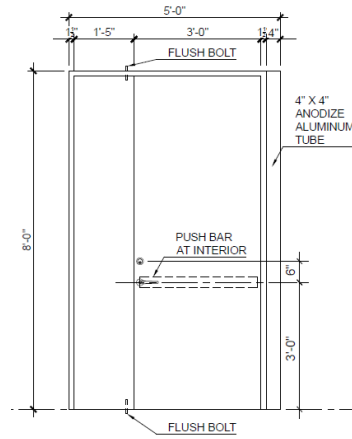
HARDWARE FINISH:  
MEDIUM DUTY SATIN CHROME



## Alternative 5

FLUSH ALUMINUM MORTISED LOCK WITH CLOSER AND DOOR STOP ANSI FUNCTION F-05 WATERSHIP

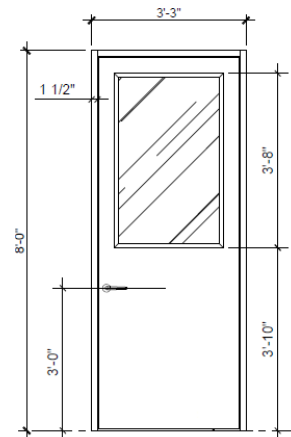
HARDWARE FINISH:  
MEDIUM DUTY SATIN CHROME



## Interior – Classroom / Environment

HOLLOW METAL DOOR: WITH CLEAR GLASS SECURITY LAMINATE WITH CLOSER AND DOOR PUSH/PULL HANDLE LOCKLESS

COLOR FINISH: STANDARD WHITE

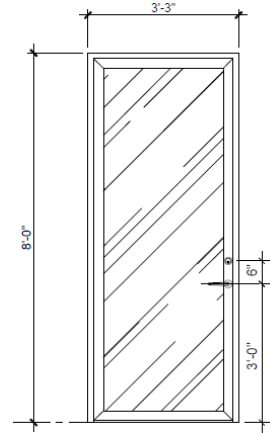


# Doors

## Interior – Administrative

ALUMINUM DOOR: FULL GLASS,  
CLEAR LAMINATED GLASS

COLOR FINISH: ANODIZE ALUMINUM

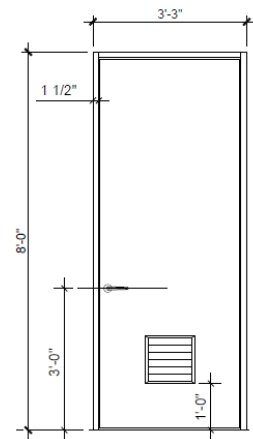


## Interior – Bathroom

### Adult

HOLLOW METAL DOOR: WITH  
CENTRALIZED LOUVER 12" X 12"

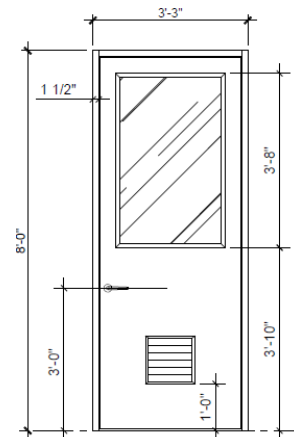
COLOR FINISH: STANDARD WHITE



### Child - HS

HOLLOW METAL DOOR: WITH CLEAR  
GLASS SECURITY LAMINATE AND  
CENTRALIZED LOUVER 12" X 12" WITH  
CLOSER AND DOOR PUSH/PULL  
HANDLE LOCKLESS

COLOR FINISH: STANDARD WHITE



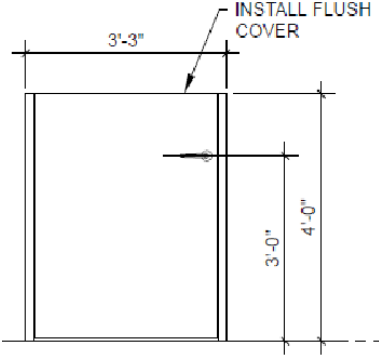


# Doors

## Child - EHS

HOLLOW METAL DOOR: 4' HEIGHT WITH ALUMINUM COVER ON TOP. SEE DETAIL

COLOR FINISH: STANDARD WHITE



**Security  
points**

- Bollard
- Intercom system with cameras
- Magnetic locks for access door from the exterior of the center
- Interior gates to stop visitors while inside for identification

## Lighting

The lighting catalog provided in this section is an applicable suggestion. Accepts substitutions according to the need and preference of the agency.

There are an aesthetic suggestion; the designer must select those that meet the calculation of lumens or foot candles required by area

## Exterior Luminaries

S21520 - Blink - 13.5W- 7" Surface Mount LED - 5000K- Round Shape - Brushed Nickel Finish - 120V



S21519 - Blink - 10.5W- 5.5" Surface Mount LED - 5000K- Square Shape - Brushed Nickel Finish - 120V



LSD-SNL-2W- Fairy – Solar Wall Light



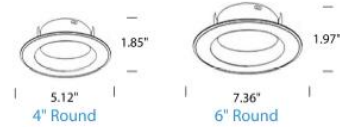
## Lighting

The lighting catalog provided in this section is an applicable suggestion. Accepts substitutions according to the need and preference of the agency.

There are an aesthetic suggestion; the designer must select those that meet the calculation of lumens or foot candles required by area

## Interior Luminaries

ALCON LIGHTING  
MODEL: (14008-6-N)



4"LED DIMMABLE  
LINNEAR LIGHT  
FIXTURE



ALCON LIGHTING  
MODEL: 11253-WH)



Mission Industrial 48 in.  
x 15 in. Brushed Nickel  
Selectable LED Flush  
Mount Light High  
Output 5500 Lumens  
Dimmable



## Lighting

The lighting catalog provided in this section is a suggestion to be implemented if a lobby or reception area is part of the facility's program.

## Decorative reception lamps

Maxas - Carson 3-Light 31.8 in. Brown Cluster Circle LED Semi-Flush Mount



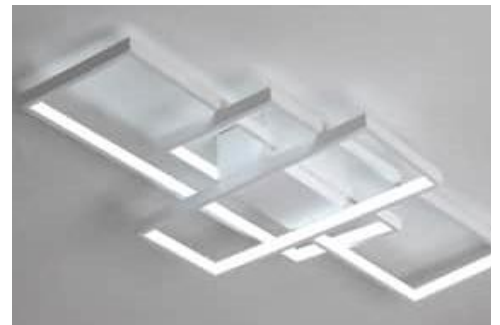
Tech lighting 700FM AEON



VONN Lighting - Capella 43 in. 4-Watt Black Integrated LED Semi Flush Mount Ceiling Fixture With 4 Light Rings



35 in. 1-Light Modern White Integrated LED Square Acrylic Flush Mount Ceiling Light (White light)



## Electrical infrastructure

Consider sufficient electrical facilities accessible to adults, out of the reach of children, for each and every one of equipment that requires electricity, which will be installed in the classroom.

Electrical facilities should be installed in different areas of the classroom according to the needs of each classroom.

- Receptacles and switches - 54"
  
- Equipment in classroom
  - Tablet station (approximately 20 tablets)
  - 75" interactive whiteboard, LED lighting, internet connection, adjustable height
  - Illuminated table with color change
  - Intelligent interactive table
  - 3D Printer
  - Music center
  - Audiovisual digital system

## Permits

### When there is no change in the proposed use

- Consolidated Construction Permit (PCOC)
  - When the proposed construction affects the footprint of the existing structure; affects side, front, and back yards; it is permanent construction attached or not to the original structure.
    - Incidental Sole Permit (PUI)
      1. Incidental Activity Permit to Authorized Work (POA)
      2. Permisos de Actividad Incidental a una Obra de Infraestructura Pública (PIE)
      3. Authorization for Cutting, Pruning, Transplanting and Planting of Trees (ACP)
      4. Consolidated General Permit (PGC)
    - Determination of Environmental Compliance via Categorical Exclusion (DEC)
    - Request for Recommendation - Health and Safety – Puerto Rico Health Department (SRS-DS)
    - Request for Recommendation - Health and Safety – Puerto Rico Fire Department (SRS-CBPPR)
- Pre-consultation – Buildability (PCE)
- Request for Recommendation – Infrastructure (SRI)
- Sole Permit (PU)





## Suggested Vendor

**Sherwin William**

<https://www.sherwin-williams.com/>

**Intertrade Caribe Corporation / Contech / Pisos Caribe**

<https://en.infopaginas.com/b/san-juan/intertrade-caribe-corporation>

**Home Depot PR**

<https://www.homedepot.com//PR>

**Daltile Ceramic & Porcelain**

<https://www.daltile.com/>

**IMPEC**

<https://impecpr.com/>

## References

Head Start web page

<https://eclkc.ohs.acf.hhs.gov/>

Head Start Facilities Manual

<https://eric.ed.gov/?id=ED397952>

Head Start Design Guide

[https://eclkc.ohs.acf.hhs.gov/sites/default/files/pdf/head\\_start-design-guide.pdf](https://eclkc.ohs.acf.hhs.gov/sites/default/files/pdf/head_start-design-guide.pdf)

Caring for our Children (CFOC4)

<http://nrckids.org/>

Guia de Ambiente Seguro - ACUDEN

Handbook for Public Playground Safety

<https://cpsc.gov/s3fs-public/325.pdf>

National Fire Protection Association

<https://www.nfpa.org/>

International Building Codes 2018 , or current

Reglamento Conjunto de Permisos para Obras de Construcción  
y Usos de Terrenos 2020, or current

<https://jp.pr.gov/wp-content/uploads/2021/07/Reglamento-Conjunto-2020-Vigencia-2-Enero-2021.pdf>

Uniform Federal Accessibility Act (UFAS)  
<https://www.access-board.gov/aba/ufas.html>

American with Disability Act (ADA) 2010 / American with Disability Act Architectural  
Guidelines (ADGA)  
<https://www.ada.gov/pubs/adastatute08.htm>

Historic Preservation Act (if applicable)  
<http://uscode.house.gov>

Permits and license (Single Business Portal, OGPe)  
<https://sbp.ogpe.pr.gov/>



DEPARTAMENTO DE LA  
**FAMILIA**  
ADMINISTRACIÓN PARA EL  
CUIDADO Y DESARROLLO  
INTEGRAL DE LA NIÑEZ



**Dirección Física**

Avenida De la Constitución, Pda 2  
San Juan, Puerto Rico, 00902

**Dirección Postal**

PO Box 15091  
San Juan, PR 00902-5091

Cuadro telefónico:  
(787) 724-7474

