

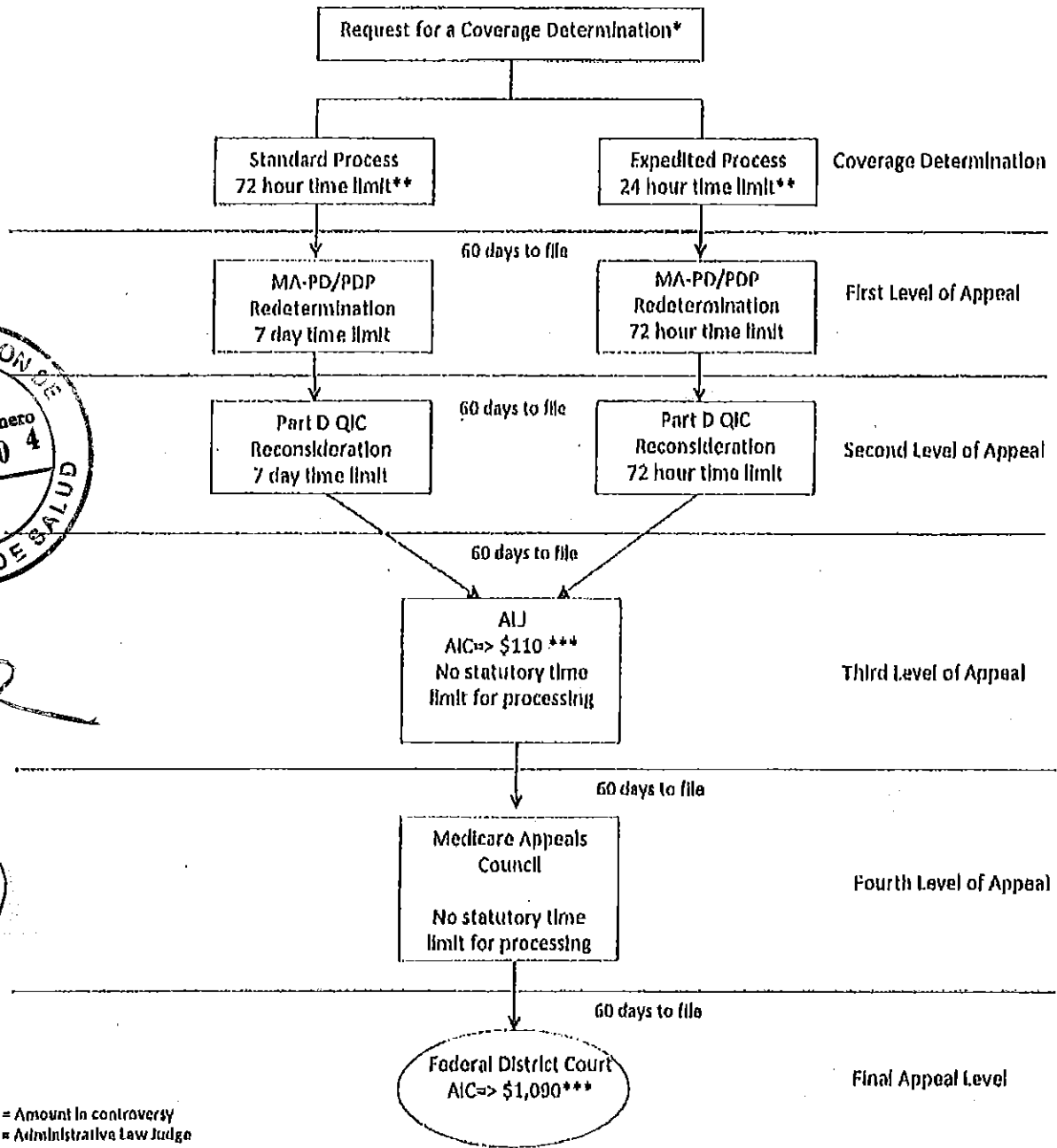
# Medicare Part D Appeal Process



*[Handwritten signature]*

*[Handwritten initials]*

*[Handwritten initials]*



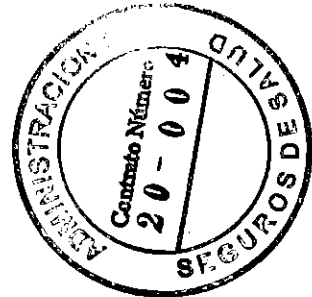
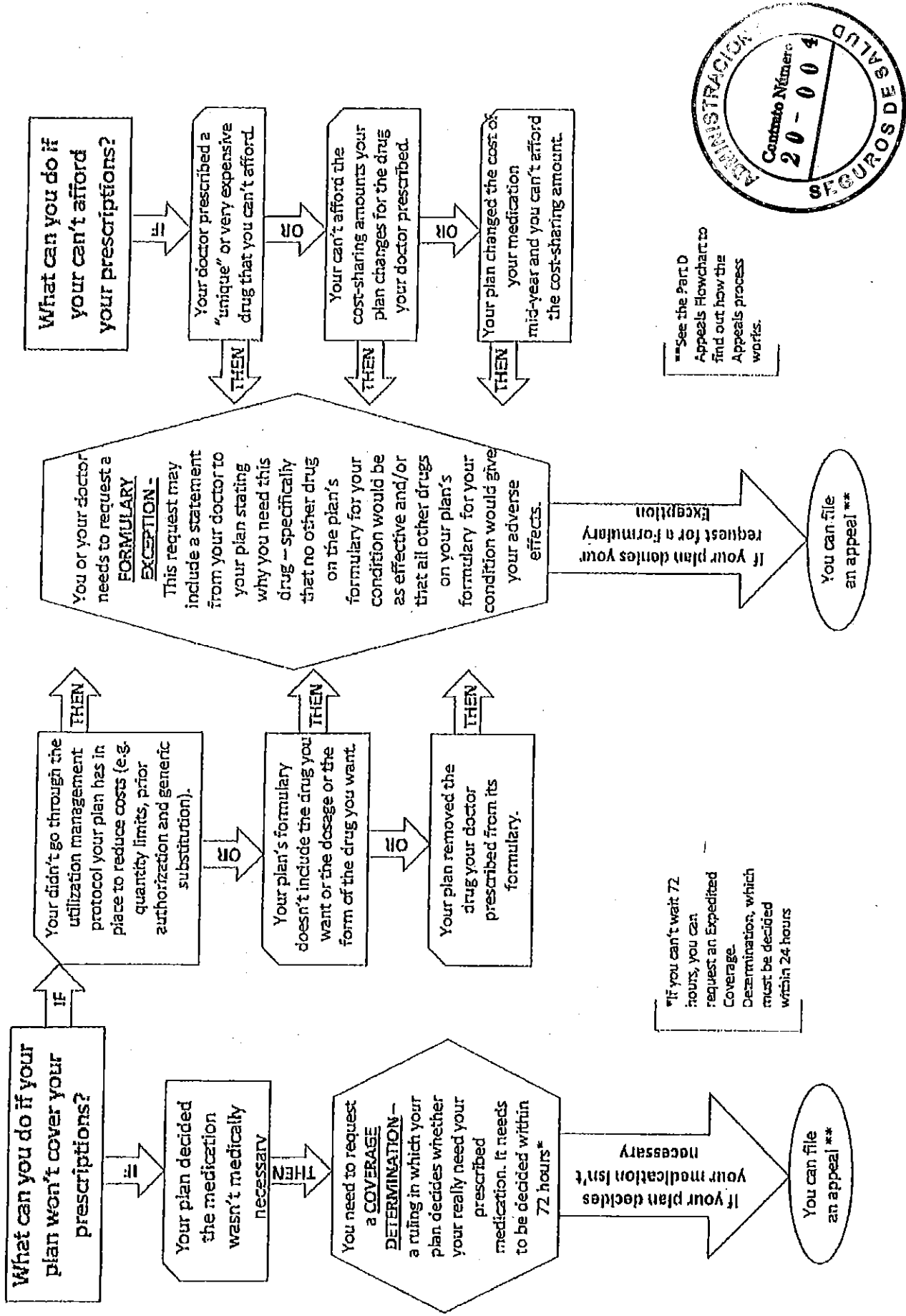
AIC = Amount in controversy  
 AIJ = Administrative Law Judge  
 IRE = Independent Review Entity  
 MA-PD = Medicare Advantage plan that offers Part D benefits  
 PDP = Prescription Drug Plan

\*A request for a coverage determination includes a request for a timing exception or a formulary exception. A request for a coverage determination may be filed by the enrollee, the enrollee's appointed representative, or the enrollee's physician.

\*\*The adjudication timeframes generally begin when the request is received by the plan sponsor. However, if the request involves an exception request, the adjudication timeframe begins when the plan sponsor receives the physician's supporting statement.

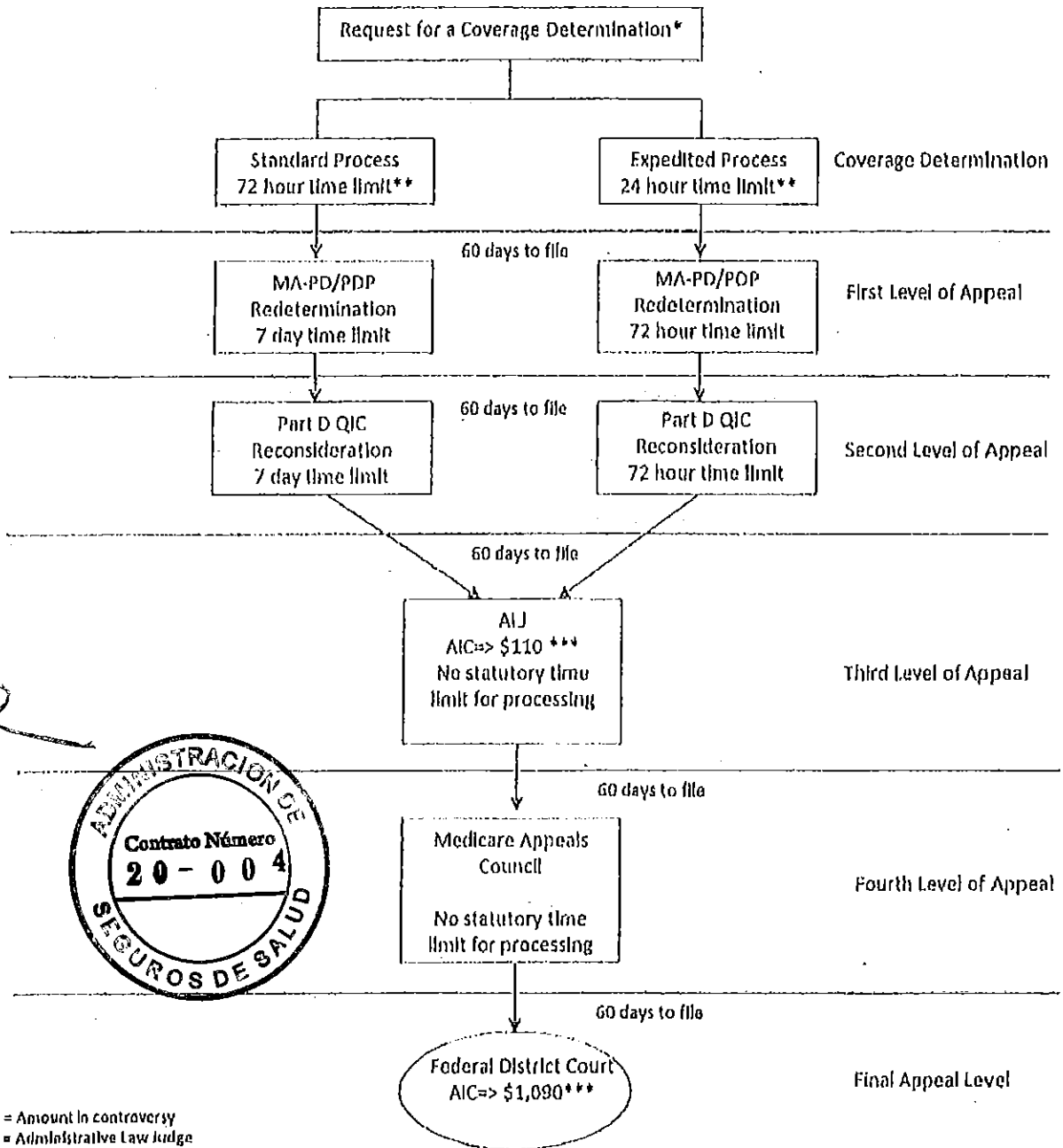
\*\*\*Starting in 2005, the AIC requirement for an AIJ hearing and Federal District Court will be adjusted in accordance with the medical care component of the consumer price index.

# The Medicare Part D Exceptions Process



*Handwritten signatures and initials.*

# Medicare Part D Appeal Process



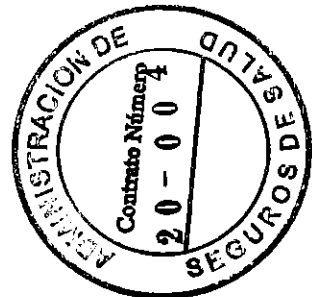
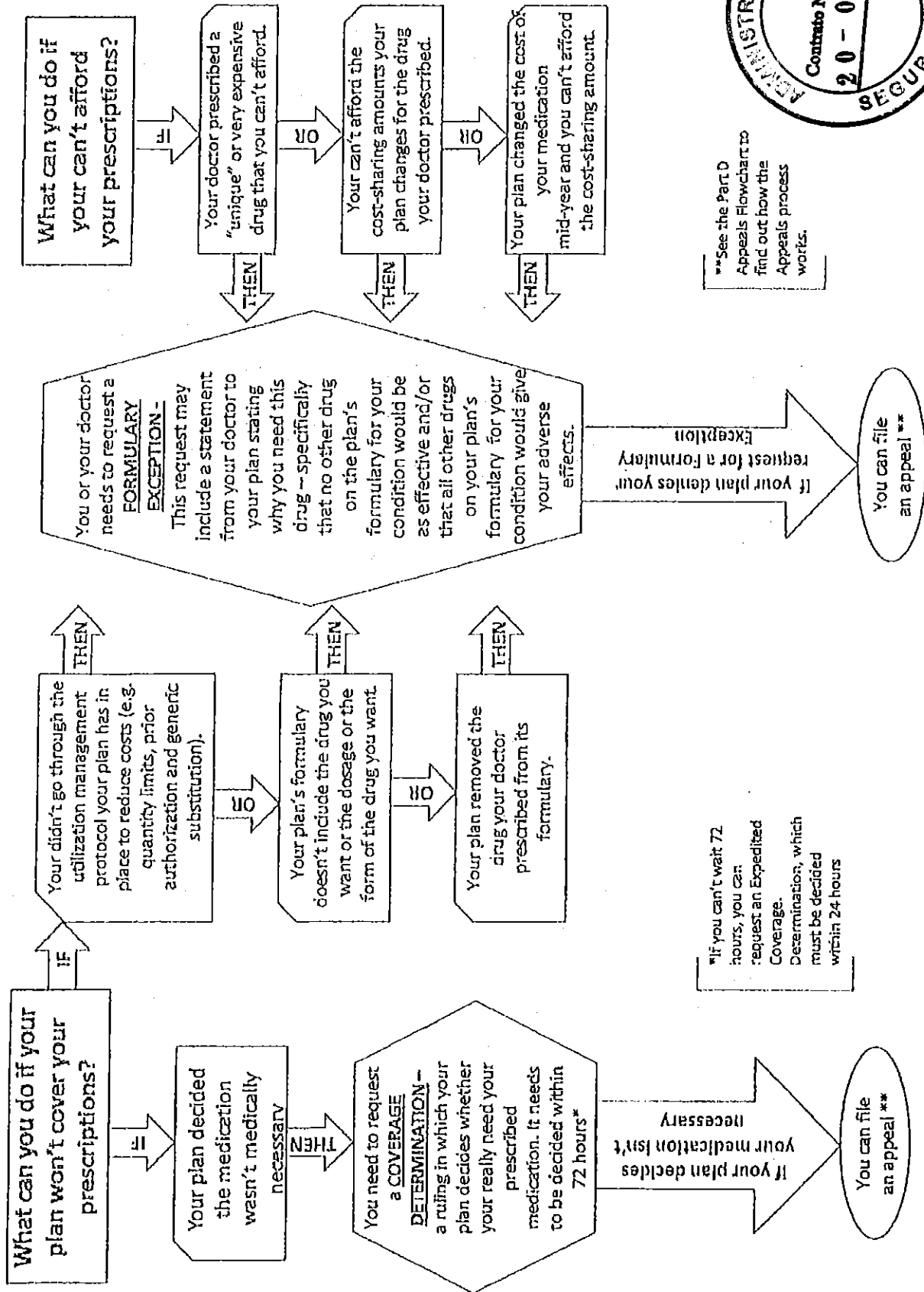
AIC = Amount in controversy  
 AIJ = Administrative Law Judge  
 IRE = Independent Review Entity  
 MA-PD = Medicare Advantage plan that offers Part D benefits  
 PDP = Prescription Drug Plan

\*A request for a coverage determination includes a request for a tiering exception or a formulary exception. A request for a coverage determination may be filed by the enrollee, the enrollee's appointed representative, or the enrollee's physician.

\*\*The adjudication timeframes generally begin when the request is received by the plan sponsor. However, if the request involves an exception request, the adjudication timeframe begins when the plan sponsor receives the physician's supporting statement.

\*\*\*Starting in 2005, the AIC requirement for an AIJ hearing and Federal District Court will be adjusted in accordance with the medical care component of the consumer price index.

# The Medicare Part D Exceptions Process



*[Handwritten signatures and scribbles]*

# Bid Reports 2020

## Bid Submission Status Report

Report Date: 6/7/2019 9:32:51 AM ET

Contract Number	Organization Name	Plan ID	Segment ID	Version	User ID/Name	Upload Confirmation Number	Upload Date/Time
H4007	HUMANA HEALTH PLANS OF PUERTO RICO, INC.	016	N/A	1	wyqd/JEFF ZACK	1176	5/31/2019 16:47
H4007	HUMANA HEALTH PLANS OF PUERTO RICO, INC.	018	N/A	1	wyqd/JEFF ZACK	1176	5/31/2019 16:47
H4007	HUMANA HEALTH PLANS OF PUERTO RICO, INC.	019	N/A	1	wyqd/JEFF ZACK	1176	5/31/2019 16:47

*Handwritten signature*

*Handwritten initials*

*Handwritten signature*

