

MEDICARE PLATINO CONTRACT

APPENDIX R (22)

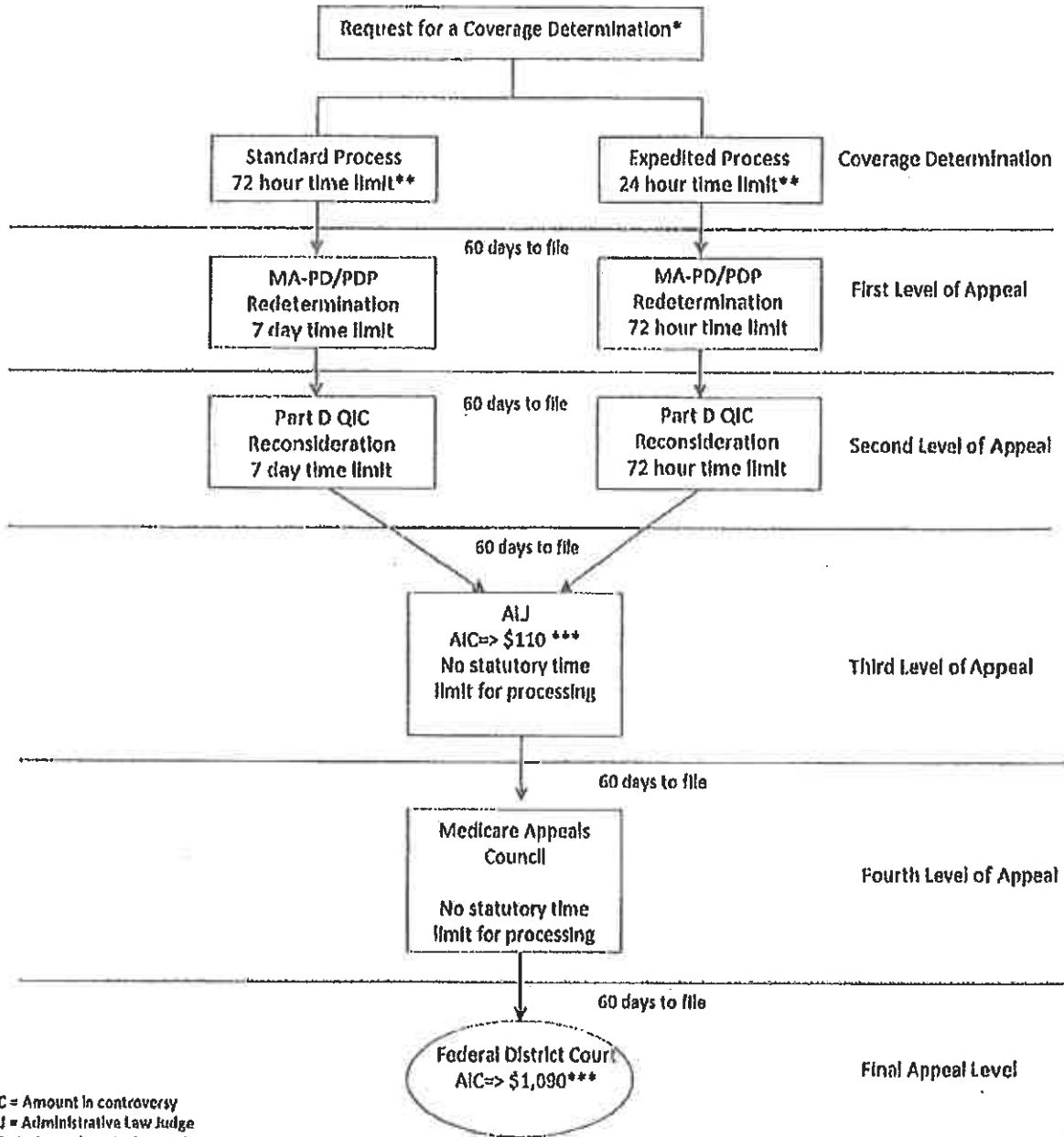
MEDICARE PART D APPEAL
PROCESS



A handwritten signature in blue ink, located to the right of the seal.

A second handwritten signature in blue ink, located below the first signature.

Medicare Part D Appeal Process



AIC = Amount in controversy
 AIJ = Administrative Law Judge
 IRE = Independent Review Entity
 MA-PD = Medicare Advantage plan that offers Part D benefits
 PDP = Prescription Drug Plan

*A request for a coverage determination includes a request for a tiering exception or a formulary exception. A request for a coverage determination may be filed by the enrollee, the enrollee's appointed representative, or the enrollee's physician.

**The adjudication timeframes generally begin when the request is received by the plan sponsor. However, if the request involves an exception request, the adjudication timeframe begins when the plan sponsor receives the physician's supporting statement.

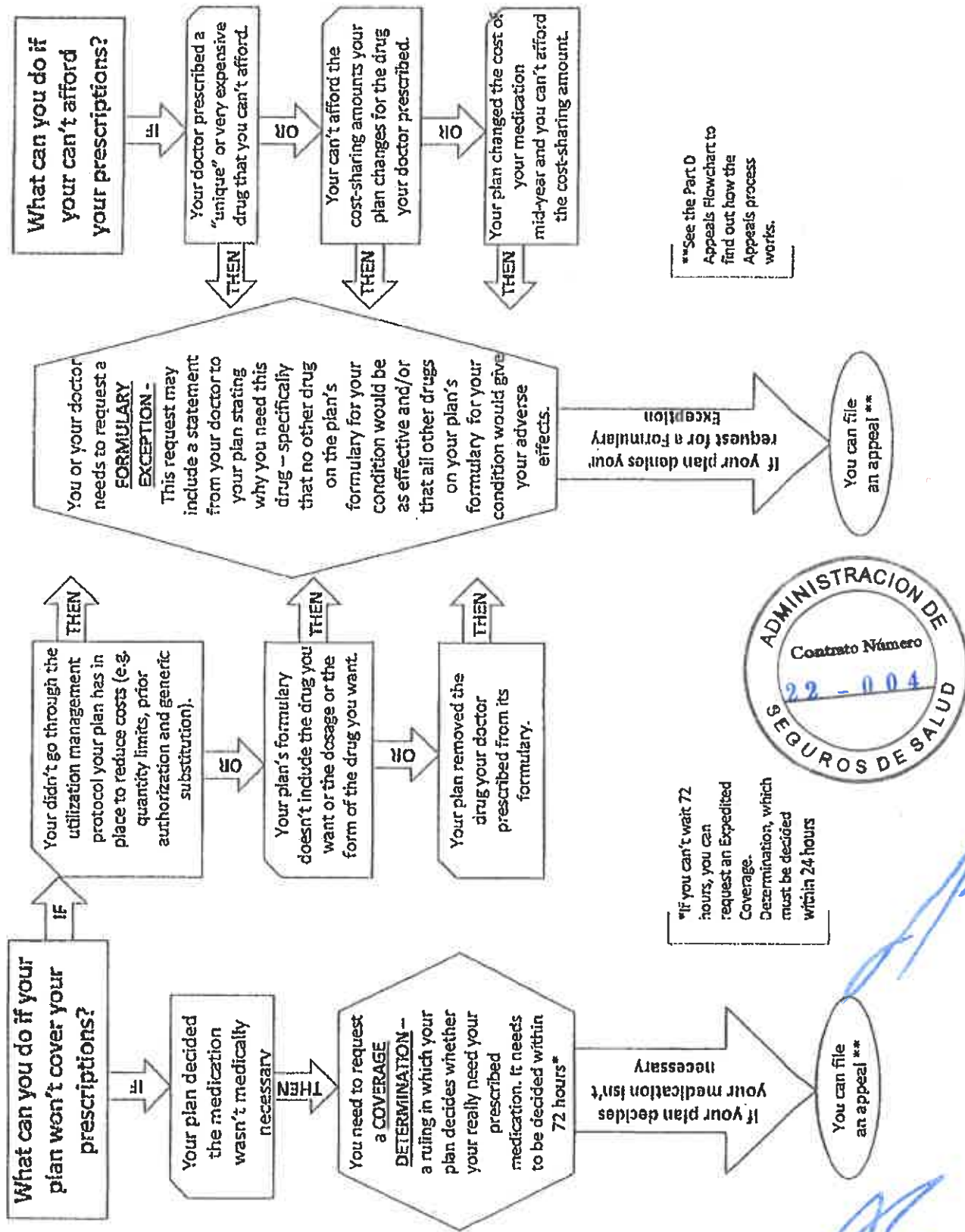
***Starting in 2005, the AIC requirement for an AIJ hearing and Federal District Court will be adjusted in accordance with the medical care component of the consumer price index.



[Handwritten signature]

[Handwritten signature]

The Medicare Part D Exceptions Process



*If you can't wait 72 hours, you can request an Expedited Coverage Determination, which must be decided within 24 hours

**See the Part D Appeals Flowchart to find out how the Appeals process works.

[Handwritten signature]