

# ADDENDUM 8

## EFT Folder Organization Insurance Carrier

POP.

ADMINISTRACION DE  
SEGUROS DE SALUD,

23 - 000474

Contrato Número

by



GOVERNMENT OF PUERTO RICO  
PUERTO RICO HEALTH INSURANCE ADMINISTRATION  
**ASES**

Puerto Rico Medicaid Enterprise - Health Insurance Plans  
ASES Enterprise File Transfer (EFT) Folder Organization  
Insurance Carrier

Version 1.1  
Effective May 01, 2023

ADMINISTRACION DE  
SEGUROS DE SALUD

23 - 000474

Contrato Número

## ASES Enterprise File Transfer (EFT) Folder Organization

Table of Contents	
<b>Table of Contents</b>	2
<b>Document Information</b>	3
<b>Revision History</b>	4
<b>Preface</b>	5
<b>ASES EFT Location</b>	6
<b>Reporting Guidelines Folder</b>	7
<b>Folder Organization</b>	7
Folder Categories	7
Container Folders	7
Data Exchange Folders	7
“General Use” Folder	8
“Benefit Enrollment and Maintenance” Folder	8
“Premium Payment” Folder	8
Encounter Data Folder	9
Reporting Package Folders	10
<b>Other Guidelines</b>	12

*RPS.*

ADMINISTRACION DE  
SEGUROS DE SALUD

23 - 00047<sup>h</sup>

Contrato Número

*BY*

Document Information

Required Information	Description
Owner:	ASES
Date:	03/16/2023



ADMINISTRACION DE  
SEGUROS DE SALUD

23 - 00047H

Contrato Número

Revision History

Version	Date	Description of Change
1.0	10/01/2022	Initial Folder Structure
1.1	03/16/2023	Criteria to consider for law 95



ADMINISTRACION DE  
SEGUROS DE SALUD

23 - 00047H

Contrato Número



**Preface**

The purpose of this document is to describe how the folders are organized in the ASES Enterprise File Transfer (EFT) solution for the Data Exchange between ASES and the Insurance Carriers.

ASES EFT solution is also known as "*ASES Secure FTP*" and it's currently contracted with CITRIX which uses a secure FTP protocol.

*ROSE*

ADMINISTRACION DE  
SEGUROS DE SALUD

23 - 00047 *h*

Contrato Número

*h*

ASES Enterprise File Transfer (EFT) Folder Organization

ASES EFT Location

The location for the ASES EFT solution (ASES Secure FTP) is in the following URL:

<https://asessecurevdr.sharefile.com/>

*RRP.*

ADMINISTRACION DE  
SEGUROS DE SALUD

23 - 00047 *h*

Contrato Número

*JK*

## Reporting Guidelines Folder

ASES publishes all reporting and data exchange guidelines in the following folder:

### Reporting\_Guidelines

## Folder Organization

Here are how the files are organized for Insurance Carriers.

## Folder Categories

### Container Folders

#### [Environment Root Folder]

This is the primary access for the Data Exchange for a specific environment.

[Environment Root Folder] can be one of the following:

Production: ASES\_FTP

Test: ASES\_FTP\_TEST

#### [Insurance Carrier Root Folder]

This is the Root Folder for an Insurance Carrier within the environment [Insurance Carrier Root Folder] will be replaced with the corresponding FTP\_CarrierName assigned to the Insurance Carrier.

#### Regular Folder

This Folder contains files for ad-hoc for manual business processes.

ADMINISTRACION DE  
SEGUROS DE SALUD

23 - 00047d

#### Automated Processing Folder

This Folder contains files for automated business processes.

Contrato Número

## Data Exchange Folders

Within container folders there are Data Exchange Folders that identify the direction of the information been shared



Received From ASES:

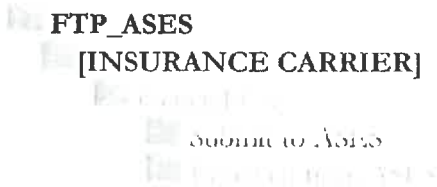
These folders contain all data exchange the Insurance Carrier **receives from ASES**.

Received From ASES:

These folders contain all data exchange the Insurance Carrier **submits from ASES**.

**“General Use” Folder**

This folder is used for manual sharing of information that is not automated in any of the other folders. The “General Use” folder is located under the following path:

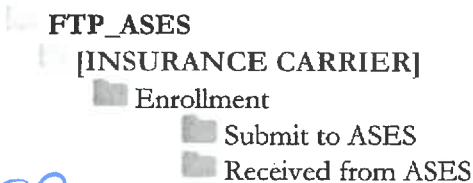


**“Benefit Enrollment and Maintenance” Folder**

This folder is used for sharing data associated with the Benefit Enrollment and Maintenance business processes.

- Received From ASES:
  - Enrollment Export Files (.EXP, .CNCL, .ALL)
- Submit to ASES:
  - Enrollment Effectuation Files (.SUS)
  - FAM95/MEM95
  - Coordination of Benefits (.COB)

The “Benefit Enrollment and Maintenance Folder” folder is located under the following path:



*Handwritten signature in blue ink.*

ADMINISTRACION DE SEGUROS DE SALUD

23 - 00047H

Contrato Número

**“Premium Payment” Folder**

This folder is used for sharing data associated with the Premium Payment business processes.

ASES Enterprise File Transfer (EFT) Folder Organization

- Received From ASES:
  - 820 Files
- Submit to ASES:
  - OTP Files

The "Benefit Enrollment and Maintenance Folder" folder is located under the following path:

- FTP\_ASES
  - [INSURANCE CARRIER]
    - Premium Payment
      - Submit to ASES
      - Received from ASES

Encounter Data Folder

- FTP\_ASES
  - [INSURANCE CARRIER]
    - Encounter Data (Report 12)
      - CLM
        - Submit to ASES
        - Received from ASES
      - CAP
        - Submit to ASES
        - Received from ASES
      - PRV
        - Submit to ASES
        - Received from ASES
      - NET
        - Submit to ASES
        - Received from ASES
      - IPA
        - Submit to ASES
        - Received from ASES

*Handwritten signature*

ADMINISTRACION DE  
SEGUROS DE SALUD

23 - 000474

Contrato Número

Reporting Package Folders

This folder is used for sharing information associated with the Reporting Package business processes as it is stated in the Reporting Guide.

An Example for the Compliance business process data exchange is as follows:

- FTP\_ASES
  - [INSURANCE CARRIER]
    - Reporting\_Package
      - Compliance
        - 1-Weekly
          - Submit to ASES
          - Received from ASES
        - 1.5-Bi-Weekly
          - Submit to ASES
          - Received from ASES
        - 2-Monthly
          - Submit to ASES
          - Received from ASES
        - 3-Quarterly
          - Submit to ASES
          - Received from ASES
        - 4-Semi annually
          - Submit to ASES
          - Received from ASES
        - 5-Annually
          - Submit to ASES
          - Received from ASES
        - 6-Ad Hoc
          - Submit to ASES
          - Received from ASES

*Handwritten signature in blue ink.*

*Handwritten signature in blue ink.*

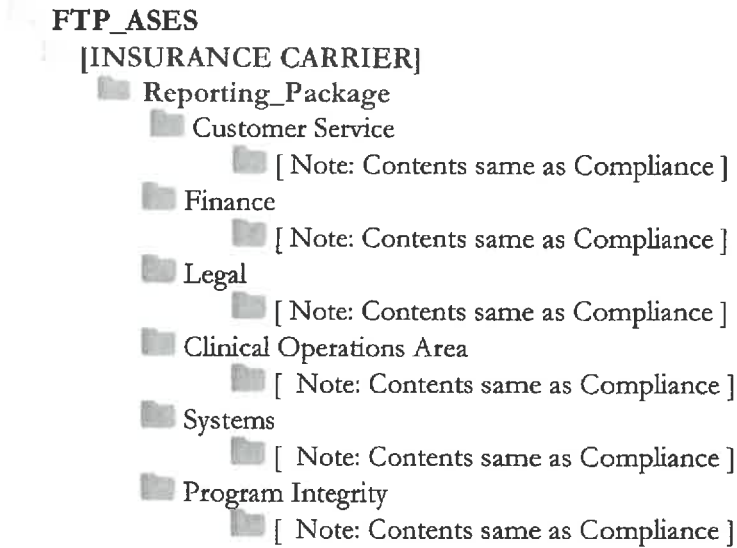
ADMINISTRACION DE  
SEGUROS DE SALUD

23 - 000472

Contrato Número

## ASES Enterprise File Transfer (EFT) Folder Organization

The other Reporting Packages business processes share the same structure:

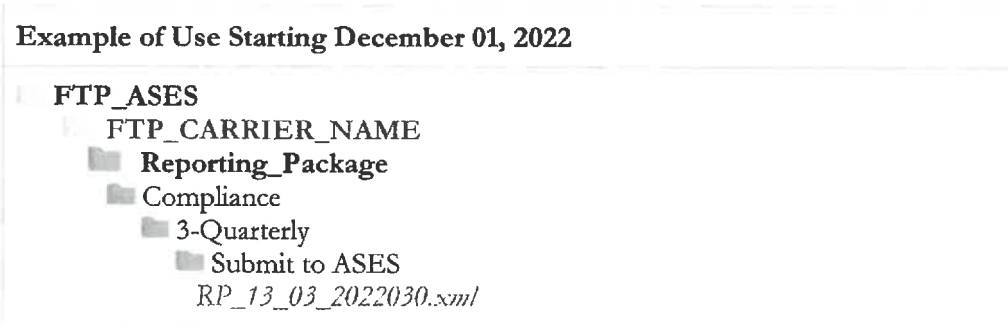


All contents for the “*Reporting\_Package*” folders, are explained in the following guides shared by ASES:

- Plan Vital Reporting Guide
- Medicare Platino Reporting Guide
- Law 95 Reporting Guide

### Example for Insurance Carrier submission (MCOs/MAOs):

Quarterly submission for report 03 “Fraud, Waste and Abuse”: RP\_13\_03\_2022030.xml. (Production Environment)

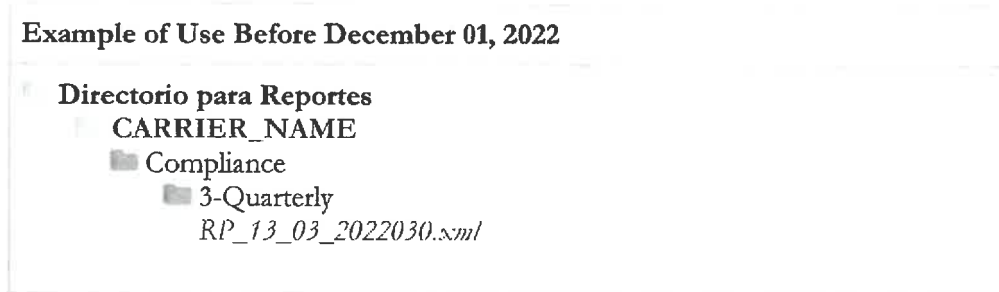


ADMINISTRACION DE  
SEGUROS DE SALUD

23 - 0004712

Contrato Número

Some Insurance Carriers used a different folder organization in the past. Please note that this will no longer be supported:



#### Other Guidelines

- No Entity other than ASES should create folders or subfolders without the written authorization of ASES, as they will be deleted without prior notice and files placed in a folder not authorized by ASES will not be considered received.
- For Test environments the folder structure will be the same as the Production Environment, except that the root folder will be as follows:
  - For QA Tests the root folder is:
    - FTP\_ASES\_TEST
  - For other required tests that are used in parallel, a specific structure can be created using a number after the word TEST, this environment will be created on demand.  
Example of root folders:
    - FTP\_ASES\_TEST01
    - FTP\_ASES\_TEST02

*PPS.*

ADMINISTRACION DE  
SEGUROS DE SALUD

23 - 00047<sup>h</sup>

Contrato Número

*PPS*

# ADDENDUM 9

## ASES Non-Risk Payment Arrangement SMA, Hepatitis C and Synthroid

The ASES Supplemental Payment Process ended on 3/3/2024.



ADMINISTRACION DE  
SEGUROS DE SALUD

23 - 00047b

Contrato Número

