

# ADDENDUM 11

## Electronic Data Interchange (EDI) Process

RRP.

ADMINISTRACION DE  
SEGUROS DE SALUD

23 - 000464

Contrato Número

*Handwritten initials in blue ink.*

ADMINISTRACION DE  
SEGUROS DE SALUD

23 - 000464

Contrato Número

# Puerto Rico Medicaid Management Information System (PRMMIS) Electronic Data Interchange (EDI) Process

*Handwritten signature in black ink.*



DEPARTAMENTO DE  
**SALUD**

Handwritten signature in blue ink.

# EDI Responsibilities

- Ensures that incoming and outgoing transactions are in compliance with Health Insurance Portability and Accountability Act (HIPAA) standards
- Provides connectivity support to external entities by providing the necessary protocol required to transmit files (such as claims) electronically
- Provides support for trading partners via EDI Helpdesk (by phone and by email) and researches issues related to EDI transmissions as they arise
- Tracks incoming and outgoing referrals for assistance with EDI problems, using the Call Center Management System (CCMS) interface

Handwritten signature in black ink.

ADMINISTRACION DE  
SEGUROS DE SALUD

23 - 00046H

SALUD

Contrato Número



2/2/20

## EDI Help Desk

- Answers calls received via phone and respond to EDI related emails
- Provides technical assistance to users who are experiencing transmission difficulties, related documents and requests
- Assists MCO/MAO's with electronic 5010 X12 HIPAA batches and real-time transactions
- Verifies receipt of electronic transmissions
- Escalate PRMMIS and E&E (Eligibility & Enrollment) related issues
- Account support (password reset & login fail)



DEPARTAMENTO DE  
**SALUD**

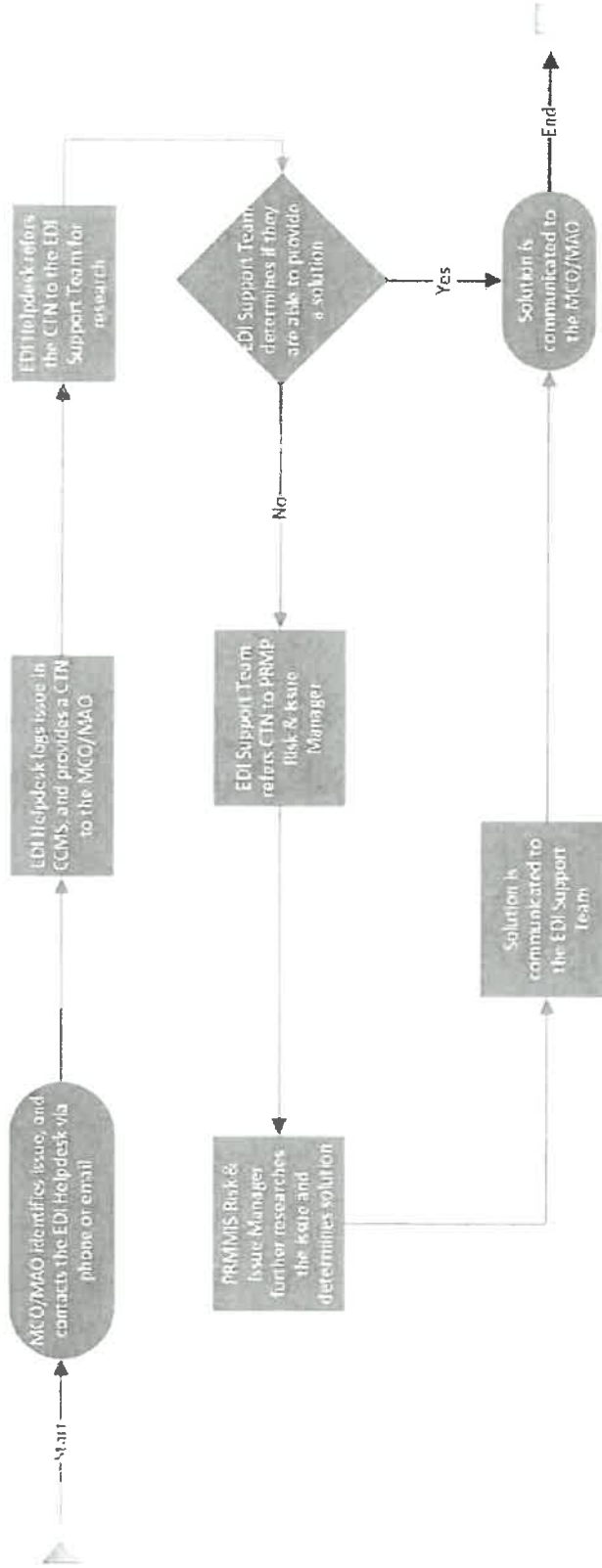
ADMINISTRACION DE  
SEGUROS DE SALUD

23 - 000464

Contrato Número

PPSP

EDI Escalation Process



EDI Escalation Process

Handwritten signature



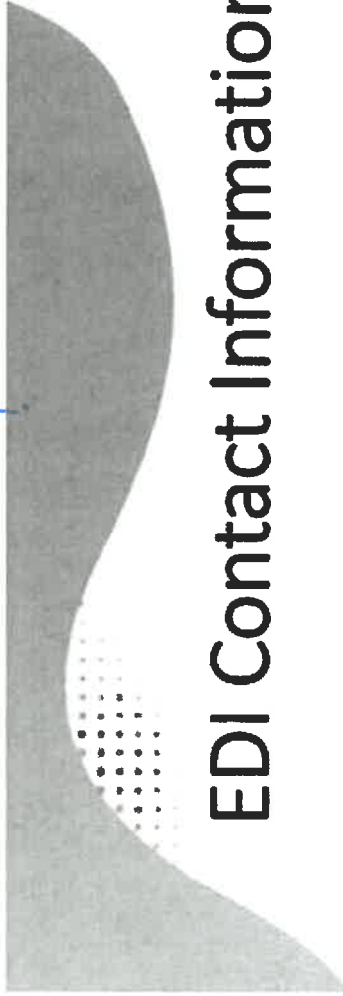
DEPARTAMENTO DE SALUD

ADMINISTRACION DE SEGUROS DE SALUD

23 - 00040H

Contrato Número

PRP



## EDI Contact Information

- Via Phone: (833) 209-8326
- Via Email: [prmmis\\_edi\\_support@gainwelltechnologies.com](mailto:prmmis_edi_support@gainwelltechnologies.com)
- EDI Operation hours: 8:00am – 5:00pm M-F

*Handwritten signature*



DEPARTAMENTO DE  
**SALUD**

ADMINISTRACION DE  
SEGUROS DE SALUD

23 - 00040A

Contrato Número