

# ***PROJECT OVERVIEW: LAUNCH SITE OPERATOR LICENSE (LSOL) AND ENVIRONMENTAL ASSESSMENT (EA)***

*JOSE APONTE DE LA TORRE AIRPORT*

**PORTS**  
AUTHORITY



**RS&H**

ARCHITECTURE | ENGINEERING | CONSULTING

# Project Introduction

**PORTS**  
AUTHORITY



Mr. Joel Piza Batiz  
(Executive Director)



Jorge Gonzalez (Prog Mgt)

**Launch Site Operator License  
(LSOL) Application**  
Andrew Nelson  
(Lead / Officer)

**Environmental Assessment (EA)**  
David Alberts (Lead)  
Dave Full (Officer)



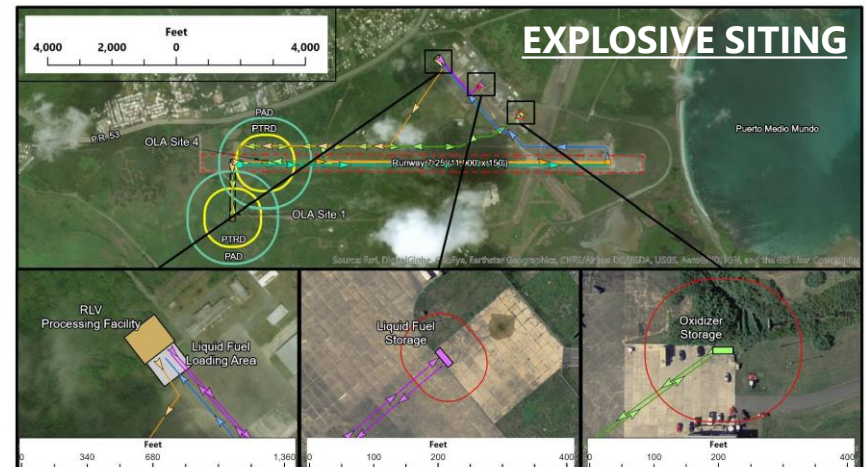
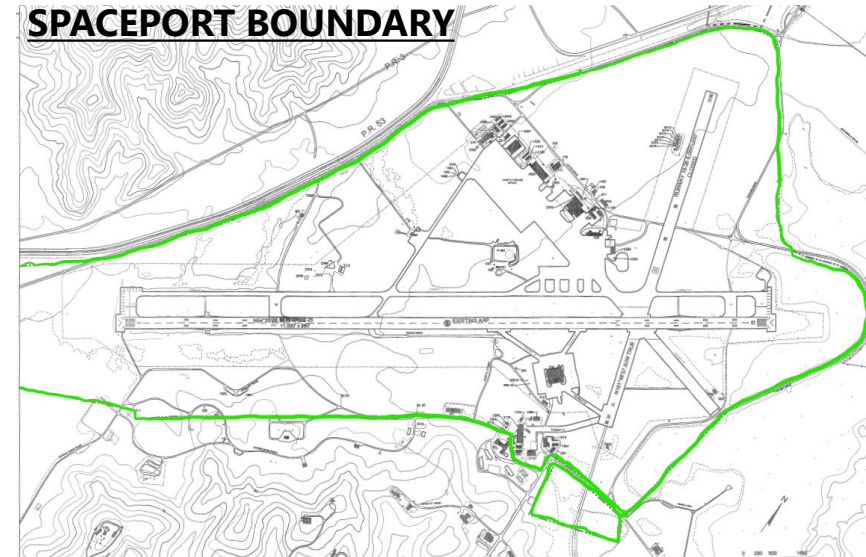
Jose Aponte de la Torre Airport  
Prepared for: Puerto Rico Ports Authority

Spaceport Launch Site Operator  
License Application Preparation  
and Environmental Assessment



# Primary Spaceport Application Elements

- » Components of LSOL Application
  - IAW 14 CFR Part 420 – LSOL App
  - Operator / Site Information
  - Environmental (FAA Order 1050.1F)
  - Launch Site Location Review
    - Includes flight safety analysis
  - Explosive Site Plan
  - Launch Site Operations
    - Letters of Agreement (ATC & USCG)
    - Access Control Plan
    - Incident Investigation Plan
    - Scheduling / Notification Plan
    - Miscellaneous Special Reqts.



## Legend

- |                               |                                   |                                       |
|-------------------------------|-----------------------------------|---------------------------------------|
| Liquid Fuel Storage Area      | RLV Departure Taxi Route          | PAD                                   |
| Oxidizer Storage Area         | RLV Arrival Taxi Route            | PTRD                                  |
| RLV Processing Facility       | Liquid Propellant Transport Route | Incompatible Intraline Distance (ILD) |
| RLV Processing Facility Apron | Oxidizer Transport Route          | Runway Safety Area (RSA)              |
| Oxidizer Loading Area (OLA)   | RLV Takeoff                       |                                       |
| OLA Taxiway                   | RLV Landing                       |                                       |

Source: RS&H, 2019; ESRI, 2019



# Operational Profile(s)

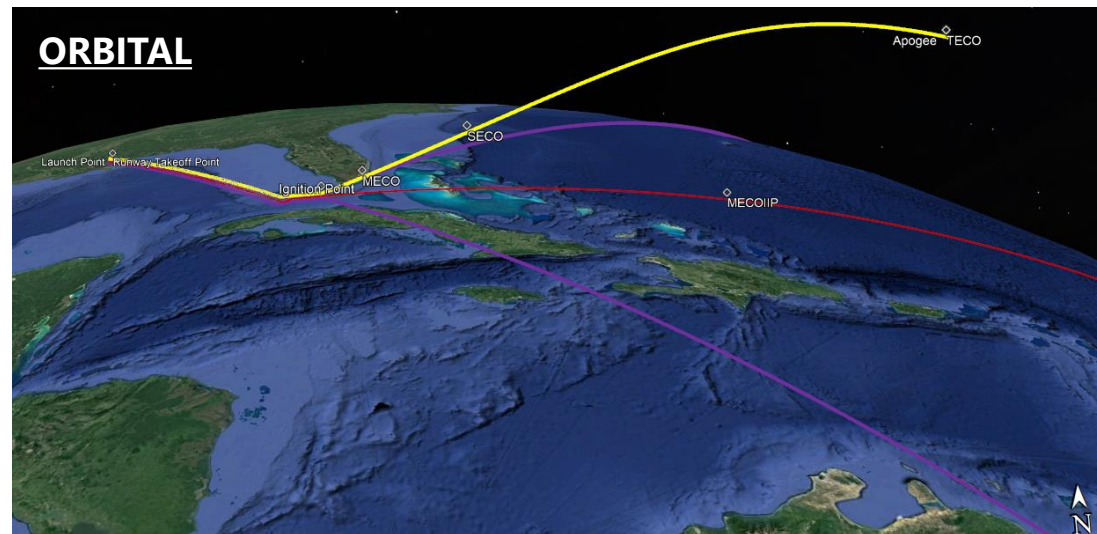
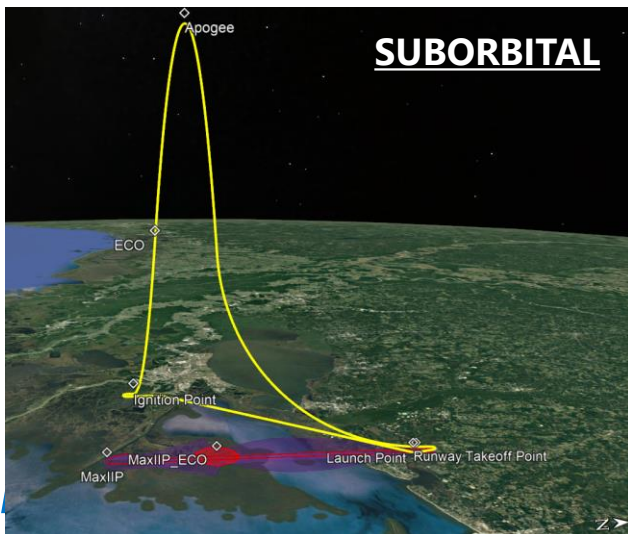
- » "Concept Z" Reusable Launch Vehicle (RLV)
  - Two-part launch vehicle
  - Powered by jet engines
  - Launch vehicle detaches
  - Suborbital or orbital
  - Horizontal return landing and/or expended
- » Annual Number of Operations
  - 19-25 Annually



SpaceShipTwo



LauncherOne



# Representative Schedule

## Pre-Application Consultation

We are here



1 PRPA Proposes an Action (Launch Site Operator License - LSOL)



2 RS&H Prepares the EA's Description of Proposed Action and Alternatives (DOPAA) and Develops the LSOL Application and Supporting Materials



3 FAA Reviews Multiple Versions of the DOPAA and Approves DOPAA



4 RS&H Conducts Data Collection, Analysis, and Technical Writing of a Preliminary Draft EA (PDEA)



5 FAA Reviews Multiple Versions of the PDEA and Approves the Publication of the Draft EA



6 FAA Formally Accepts the LSOL Application and Publishes the Draft EA for Agency and Public Review



7 RS&H Reviews Draft EA Comments and Develops Preliminary Final EA



8 RS&H Addresses FAA Comments on the LSOL Application and FAA Approves Final EA



9 FAA Prepares Decision -FONSI and PRPA Acquires a LSOL for Jose Aponte de la Torre Airport

## LAUNCH SITE OPERATOR LICENSE AND EA PROCESS

## Application Review / Response

**THANK YOU!**

***PROJECT OVERVIEW:  
LAUNCH SITE OPERATOR  
LICENSE (LSOL) AND  
ENVIRONMENTAL  
ASSESSMENT (EA)***

*JOSE APONTE DE LA TORRE AIRPORT*

**PORTS**  
AUTHORITY



**RS&H**

ARCHITECTURE | ENGINEERING | CONSULTING