



**SUBASTA FORMAL NÚM. 45-2223-003  
REMODELACIÓN Y ROTULACIÓN DE PARADAS**

**PLANOS RUTA 5**

# BUS STOP SIGNAGE PROJECT - PHASE 1

## ROUTE 5 | BUS STOPS

### SCHEDULE OF DRAWING

SHEET NO.	DRAWING NO.	DESCRIPTION
1	TI-1	TITLE SHEET
2	GR-1.01	INDEX SHEET: ROUTE 5   BUS STOPS
3	MOT-1.01	MAINTENANCE OF TRAFFIC: NOTES AND DETAILS
4	MOT-1.02	MAINTENANCE OF TRAFFIC DETAILS
5	MOT-1.03	MAINTENANCE OF TRAFFIC DETAILS
6	MOT-1.04	MAINTENANCE OF TRAFFIC DETAILS

#### ROUTE 5 | FROM ITURREGUI TERMINAL TO SAN JUAN TERMINAL

7 - 38 TS-1.01 TO TS-1.32: ROUTE 5 | BUS STOPS

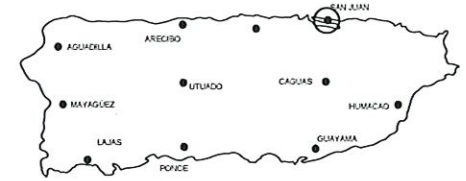
#### ROUTE 5 | FROM SAN JUAN TERMINAL TO ITURREGUI TERMINAL

39 - 72 TS-2.01 TO TS-2.34: ROUTE 5 | BUS STOPS

73 - 88 TS-3.01 TO TS-3.16: TRAFFIC SIGNS DETAILS



MUNICIPALITIES OF SAN JUAN AND CAROLINA  
LOCALIZACION 1:20,000



**AUTORIDAD  
METROPOLITANA DE  
AUTOBUSES**



FROM ITURREGUI TERMINAL TO SAN JUAN TERMINAL  
BALDORIOTY DE CASTRO AVE. (HIGHWAY PR-26) - MARGINAL ST.  
HIGHWAY PR-37, PR-25, DEL TREN STREET & AIRPORT AVE.  
MUNICIPALITIES OF CAROLINA & SAN JUAN

**NOTE**  
ALL WORK ON THIS PROJECT SHALL BE PERFORMED AND ALL MATERIALS SHALL BE IN SUBSTANTIAL CONFORMITY WITH THE STANDARD SPECIFICATIONS FOR ROAD AND BRIDGE CONSTRUCTION AND GENERAL PROVISIONS APPROVED BY THE PUERTO RICO HIGHWAY AND TRANSPORTATION AUTHORITY IN 2011



HERNAN E. LOPEZ BAEZ, PE MEM  
LIC. 18154PE

PD E&T 3040, PWB 427  
SINCE 1988, P.R. 00779  
TEL: 787-761-6948 & 200  
CORPORATE@METROPOLITANA.PR.GOV

OWNER



DRAWING TYPE:  
TI-1

SHEET:

1 OF 68

El Ingeniero E. Lopez Baez, ingeniero de profesión, declara que es el profesional que autorizó el diseño y la preparación de esta planilla y que se responsabiliza de la exactitud de los datos y de la correcta interpretación de las especificaciones técnicas que se han considerado en el presente. Asimismo, declara que el presente proyecto de obra de arte de ingeniería se ha desarrollado de acuerdo con las disposiciones técnicas de la Autoridad Metropolitana de Autobuses y que el presente proyecto de obra de arte de ingeniería se ha desarrollado de acuerdo con las disposiciones técnicas de la Autoridad Metropolitana de Autobuses y que el presente proyecto de obra de arte de ingeniería se ha desarrollado de acuerdo con las disposiciones técnicas de la Autoridad Metropolitana de Autobuses.



# ROUTE 5 | BUS STOPS

ROUTE 5: FROM SAN JUAN TO ITURREGUI TERMINAL				
NUMBER	SHEET	BUS STOP	BUS STOP LOCATION	MUNICIPALITY
<b>SAN JUAN TERMINAL</b>				
7	TS-1.01	9	ONLY LANE JUAN PONCE DE LEÓN AVE. AFTER OLIMPO ST.	SAN JUAN
8	TS-1.02	10	ONLY LANE JUAN PONCE DE LEÓN AVE. BEFORE OPPOSITE SIDE OF MADRID ST.	SAN JUAN
9	TS-1.03	11	ONLY LANE JUAN PONCE DE LEÓN AVE. BEFORE OPPOSITE SIDE OF WAYMOUTH ST.	SAN JUAN
10	TS-1.04	12	ONLY LANE JUAN PONCE DE LEÓN AVE. BEFORE CERRA ST.	SAN JUAN
11	TS-1.05	13	ONLY LANE JUAN PONCE DE LEÓN AVE. BEFORE OPPOSITE SIDE OF RONCABADO ST.	SAN JUAN
12	TS-1.06	14	ONLY LANE JUAN PONCE DE LEÓN AVE. BEFORE CONDADO ST.	SAN JUAN
13	TS-1.07	15	ONLY LANE JUAN PONCE DE LEÓN AVE. OPPOSITE SIDE OF VILLAMIL ST.	SAN JUAN
14	TS-1.08	16	ONLY LANE JUAN PONCE DE LEÓN AVE. AFTER OPPOSITE SIDE OF DUFFAUT ST.	SAN JUAN
15	TS-1.09	17	ONLY LANE JUAN PONCE DE LEÓN AVE. BEFORE LLOVERAS ST.	SAN JUAN
16	TS-1.10	18	ONLY LANE JUAN PONCE DE LEÓN AVE. BEFORE OPPOSITE SIDE OF DE DIEGO AVE.	SAN JUAN
17	TS-1.11	22	LOÍZA ST. INT. DEL PARQUE ST.	SAN JUAN
18	TS-1.12	23	LOÍZA ST. INT. TAFT ST.	SAN JUAN
19	TS-1.13	24	LOÍZA ST. BEFORE JEFFERSON ST.	SAN JUAN
20	TS-1.14	25	LOÍZA ST. BEFORE APONTE ST.	SAN JUAN
21	TS-1.15	26	LOÍZA ST. BEFORE MARÍA MOCZO ST.	SAN JUAN
22	TS-1.16	27	LOÍZA ST. INT. SANTA CECILIA ST.	SAN JUAN
23	TS-1.17	28	LOÍZA ST. AFTER OPPOSITE SIDE OF RAMPLA DEL ALMIRANTE ST.	SAN JUAN
24	TS-1.18	29	LOÍZA ST. BEFORE PROVIDENCIA ST.	SAN JUAN
25	TS-1.19	47	LAGUNA AVENUE BEFORE OPPOSITE SIDE OF ACUARIO ST.	CAROLINA
26	TS-1.20	48	LAGUNA AVENUE BEFORE OPPOSITE SIDE OF LUNA ST.	CAROLINA
27	TS-1.21	49	LUNA ST. INT. ANDRÓMEDA ST.	CAROLINA
28	TS-1.22	50	LUNA ST. INT. ASTRO ST.	CAROLINA
29	TS-1.23	51	LUNA ST. BEFORE TAURO ST.	CAROLINA
30	TS-1.24	52	LUNA ST. BEFORE SOL ST.	CAROLINA
31	TS-1.25	53	SOL ST. OPPOSITE SIDE OF SAGITARIO ST.	CAROLINA
32	TS-1.26	54	BALDORIOTY DE CASTRO MARGINAL FRONT METHODIST CHURCH	CAROLINA
33	TS-1.27	55	BALDORIOTY DE CASTRO MARGINAL INT. JOAQUINA ST.	CAROLINA
34	TS-1.28	56	BALDORIOTY DE CASTRO MARGINAL FRONT ENTERPRISE	CAROLINA
35	TS-1.29	57	BALDORIOTY DE CASTRO MARGINAL FRONT INTERSUITE CONDOMINIUM	CAROLINA
36	TS-1.30	58	BALDORIOTY DE CASTRO MARGINAL BEFORE SANTANA AVENUE	CAROLINA
37	TS-1.31	59	BALDORIOTY DE CASTRO MARGINAL FRONT FUENTE AGUA VIVA CHURCH	CAROLINA
38	TS-1.32	60	BALDORIOTY DE CASTRO MARGINAL BEFORE ITURREGUI AVENUE	CAROLINA
<b>ITURREGUI STATION</b>				

ROUTE 5: FROM ITURREGUI TERMINAL TO SAN JUAN				
NUMBER	SHEET	BUS STOP	BUS STOP LOCATION	MUNICIPALITY
<b>ITURREGUI STATION</b>				
39	TS-2.01	1	BALDORIOTY DE CASTRO MARGINAL AFTER ITURREGUI AVENUE	CAROLINA
40	TS-2.02	2	BALDORIOTY DE CASTRO MARGINAL OPPOSITE SIDE OF FUENTE AGUA VIVA CHURCH	CAROLINA
41	TS-2.03	3	BALDORIOTY DE CASTRO MARGINAL AFTER SANTANA AVENUE	CAROLINA
42	TS-2.04	4	BALDORIOTY DE CASTRO MARGINAL OPPOSITE SIDE OF INTERSUITE CONDOMINIUM	CAROLINA
43	TS-2.05	5	BALDORIOTY DE CASTRO MARGINAL OPPOSITE SIDE OF JOAQUINA ST.	CAROLINA
44	TS-2.06	6	SOL ST. BEFORE PISCIS ST.	CAROLINA
45	TS-2.07	7	LUNA ST. AFTER SOL ST.	CAROLINA
46	TS-2.08	8	LUNA ST. INT. PEGASO ST.	CAROLINA
47	TS-2.09	9	LUNA ST. BEFORE ARIES ST.	CAROLINA
48	TS-2.10	10	LUNA ST. INT. ASTRAL ST.	CAROLINA
49	TS-2.11	11	LUNA ST. INT. COSMOS ST.	CAROLINA
50	TS-2.12	12	LAGUNA AVENUE BEFORE ACUARIO ST.	CAROLINA
51	TS-2.13	13	COSMOS ST. BEFORE LUNA ST.	CAROLINA
52	TS-2.14	14	ESTRELLA DEL NORTE ST. INT. ANDRÓMEDA ST.	CAROLINA
53	TS-2.15	15	CRUZ DEL SUR ST. BEFORE ASTRAL ST.	CAROLINA
54	TS-2.16	16	CRUZ DEL SUR ST. INT. LOS ÁNGELES ST.	CAROLINA
55	TS-2.17	33	LOÍZA ST. AFTER LAS AMÉRICAS AVENUE	SAN JUAN
56	TS-2.18	34	LOÍZA ST. AFTER RAMPA DEL ALMIRANTE ST.	SAN JUAN
57	TS-2.19	35	LOÍZA ST. BEFORE OPPOSITE SIDE OF MANUEL CORCHADO ST.	SAN JUAN
58	TS-2.20	36	LOÍZA ST. AFTER CORDERO ST.	SAN JUAN
59	TS-2.21	37	LOÍZA ST. INT. FAMILY COURT ST.	SAN JUAN
60	TS-2.22	38	LOÍZA ST. BEFORE F. KING'S COURT ST	SAN JUAN
61	TS-2.23	39	LOÍZA ST. BEFORE DE DIEGO AVE.	SAN JUAN
62	TS-2.24	43	JUAN PONCE DE LEÓN AVENUE BEFORE OPPOSITE SIDE OF LLOVERAS ST.	SAN JUAN
63	TS-2.25	44	JUAN PONCE DE LEÓN AVENUE BEFORE OPPOSITE SIDE OF HIPÓDROMO ST.	SAN JUAN
64	TS-2.26	45	JUAN PONCE DE LEÓN AVENUE BEFORE DEFFAUT ST.	SAN JUAN
65	TS-2.27	46	JUAN PONCE DE LEÓN AVENUE BEFORE LABRA ST.	SAN JUAN
66	TS-2.28	47	JUAN PONCE DE LEÓN AVENUE BEFORE JESÚS TIZOL ST.	SAN JUAN
67	TS-2.29	48	JUAN PONCE DE LEÓN AVENUE INT RUCABADO ST.	SAN JUAN
68	TS-2.30	49	JUAN PONCE DE LEÓN AVENUE INT. MONSERRATE ST.	SAN JUAN
69	TS-2.31	50	JUAN PONCE DE LEÓN AVENUE BEFORE HOARE ST.	SAN JUAN
70	TS-2.32	51	JUAN PONCE DE LEÓN AVENUE BEFORE TRIGO ST.	SAN JUAN
71	TS-2.33	52	JUAN PONCE DE LEÓN AVENUE BEFORE ENSENADA ST.	SAN JUAN
72	TS-2.34	53	JUAN PONCE DE LEÓN AVENUE OPPOSITE SIDE OF OLIMPO ST.	SAN JUAN
<b>SAN JUAN TERMINAL</b>				

Este Plan de Línea Base, representado por los datos de los puntos de parada y las rutas de las líneas de tránsito, se basa en los datos de los puntos de parada y las rutas de las líneas de tránsito que se encuentran en el Sistema de Información Geográfica (SIG) de la Autoridad Metropolitana de Autobuses (AMA) y en los datos de los puntos de parada y las rutas de las líneas de tránsito que se encuentran en el Sistema de Información Geográfica (SIG) de la Autoridad Metropolitana de Autobuses (AMA) y en los datos de los puntos de parada y las rutas de las líneas de tránsito que se encuentran en el Sistema de Información Geográfica (SIG) de la Autoridad Metropolitana de Autobuses (AMA).

PD Box 3040, PHB 427  
 DURABO, PR 00728  
 TEL. (787) 649-6200 | LOPEZBAEZ@ENZODRUPUBLIC.ORG



**BUS STOP SIGNAGE PROJECT - PHASE 1**  
**INDEX SHEET: ROUTE 5 | BUS STOPS**  
 FROM ITURREGUI TERMINAL TO SAN JUAN TERMINAL  
 MUNICIPALITIES OF CAROLINA & SAN JUAN



METROPOLITAN BUS AUTHORITY  
 BOX 192343  
 SAN JUAN, PR 00919-2343

REVISION	
DATE	JUNE 2022
CHECKED BY	DRAW BY:
BEV	ABZ
DWG. TYPE	SHEET NO.
GR-1.01	2 OF

# ROUTE 5 | BUS STOPS

## GENERAL NOTES:

- NO WORK OTHER THAN MOBILIZATION, TRAFFIC CONTROL, AND PROJECT FIELD OFFICE SHALL BE PERFORMED UNTIL THE PROGRESS SCHEDULE IS APPROVED BY THE ENGINEER.
- ALL TEMPORARY CONTROL DEVICES SHALL COMPLY WITH THE SUPPLEMENTAL SPECIFICATION NUMBER 633 - "MAINTENANCE AND PROTECTION OF TRAFFIC" OF THE STANDARD SPECIFICATIONS FOR ROAD AND BRIDGE CONSTRUCTION, 2009 EDITION.
- EQUIPMENT, MATERIALS AND OTHER DEVICES USED FOR CONSTRUCTION SHALL BE REMOVED FROM THE ROADWAY AFTER WORK HOURS AND SHALL BE STAGED A MINIMUM OF 10 METERS FROM THE TRAVEL WAY.
- THE DRUM SPACING SHALL BE 4 METERS.
- ANY ALTERATION TO THE SCHEDULE THAT MAY IMPROVE TRAFFIC OPERATIONS WITHIN THE CONSTRUCTION AREA, IN ACCORDANCE WITH THE CURRENT MUTCD AND WITHOUT ADDITIONAL COST TO THE AUTHORITY, SHALL BE SUBMITTED TO THE ENGINEER AT LEAST TWENTY ONE (21) CALENDAR DAYS IN ADVANCE TO THE PROPOSED DATE OF IMPLEMENTATION FOR REVIEW. IF THE PROPOSED ALTERATION IS APPROVED IT SHALL BE IMPLEMENTED AS DIRECTED BY THE ENGINEER.
- THE CONTRACTOR CAN PERFORM, WITH THE APPROVAL OF THE ENGINEER, SEVERAL SIMULTANEOUS ACTIVITIES WITHIN A STAGE, AND AS PERMITTED BY THE CONTRACT PROPOSAL QUANTITIES ON THE TRAFFIC CONTROL ITEMS.
- THE CONTRACTOR SHALL COORDINATE WITH THE ENGINEER THE INSTALLATION OF TEMPORARY TRAFFIC CONTROL DEVICES FOR EACH PHASE AT LEAST FORTY-FIVE (45) CALENDAR DAYS IN ADVANCE FOR THE RELEASE OF PUBLIC NOTICE. THE CONTRACTOR SHALL NOT COMMENCE ANY OF THE CONSTRUCTION PHASES WITHOUT A PUBLIC NOTICE IS ISSUED OR WITHOUT DIRECT CONSENT FROM THE ENGINEER.
- THE CONTRACTOR SHALL FURNISH TEMPORARY TRAFFIC CONTROL DEVICES THAT MEET MICHIP 300 CRITERIA FOR THE APPLICABLE CORNERWORKS STANDARD.
- ALL TRAFFIC CONTROL SIGNS DETERMINED BY THE ENGINEER TO BE UNNECESSARY FOR THE APPLICABLE CONSTRUCTION OPERATION SHALL BE IMMEDIATELY COVERED IN ITS ENTIRETY WITH NON-ABRASIVE MATERIAL AND SHALL BE INSPECTED DURING DAY AND NIGHT TIME TO ENSURE THAT THE SIGN IS NOT READABLE. THIS WORK IS A SUBSIDIARY OBLIGATION OF THE CONTRACT UNDER EXISTING PAY ITEMS.
- DURING THE CONSTRUCTION OPERATIONS, THE CONTRACTOR SHALL TAKE ALL THE NECESSARY PRECAUTIONS AND MEASURES TO AVOID FALLING DEBRIS, TOOLS, EQUIPMENT OR ANY OTHER MATERIALS INTERFERE OR IMPACT THE MOTORING PUBLIC IN THE ROADWAY. ALL THE MATERIALS, LABOR EQUIPMENT, AND WORK NECESSARY FOR IMPLEMENTING THIS REQUIREMENT IS SUBSIDIARY OBLIGATION OF THE CONTRACT UNDER EXISTING PAY ITEMS.
- THE CONTRACTOR SHALL MAINTAIN ACCESS AT ALL TIMES TO ADJACENT PROPERTIES DURING CONSTRUCTION. THIS WORK WILL REQUIRE COORDINATION WITH BUSINESSES AND PRIVATE OWNERS. ALL THE MATERIALS, LABOR EQUIPMENT, AND WORK NECESSARY FOR IMPLEMENTING THIS REQUIREMENT IS SUBSIDIARY OBLIGATION OF THE CONTRACT UNDER EXISTING PAY ITEMS.
- TEMPORARY CONCRETE BARRIER SHOULD HAVE AN OFF-SET END SECTION AS APPROVED BY THE ENGINEER.
- NO EXCAVATION AND/OR PAVEMENT DROP-OFF SHALL REMAIN OPEN WITHIN THE TRAVELED WAY WHEN THE CONTRACTOR OR ITS PERSONNEL IS NOT WORKING AND PHYSICALLY PRESENT AT THE WORK SITE.

## CONSTRUCTION SCHEDULE:

FOR THE CONSTRUCTION OPERATIONS FOR THE IMPROVEMENTS AND SIGNAGE AT THE BUS STOPS OF THE PRIMA FROM COVADONGA TERMINAL TO ITURREGUI TERMINAL, INCLUDING BALCONOTE DE CASTRO AVE. (HIGHWAY PR-20), WARDEN ST., HIGHWAY PR-32, PR-26, DEL TRIN STREET AND A HORTON AVE. IN THE MUNICIPALITIES OF CAROLINA AND SAN JUAN. THE FOLLOWING CONSTRUCTION SCHEDULE AND BASIC SAFETY PRINCIPLES SHALL BE FOLLOWED IN ORDER TO MAINTAIN TRAFFIC FLOW WITH THE LEAST POSSIBLE INTERFERENCE FROM THE WORK. ANY ALTERATIONS TO THIS SCHEDULE, SHALL BE SUBMITTED IN WRITING TO THE EXECUTIVE DIRECTOR FOR FINAL APPROVAL PRIOR TO EXECUTION.

TYPICAL DETAILS ARE SUBMITTED FOR THE TEMPORARY TRAFFIC CONTROL ACTIVITIES FOR A VARIETY OF SITUATIONS COMMONLY ENCOUNTERED. IT IS REQUIRED FROM THE ENGINEER TO ADJUST THESE GUIDELINES TO FIELD CONDITIONS. ALSO A MAINTENANCE OF TRAFFIC IS INCLUDED FOR EACH ONE OF THE RAMP THAT REQUIRE A PARTIAL CLOSURE DURING THE PAVEMENT AND BRIDGE DECK REHAUSILATION.

## TRAFFIC FLOW:

- THE TRAFFIC FLOW WILL BE FLOWING AS INDICATED ON THE TYPICAL DETAIL USED FOR THE CONSTRUCTION AREA.
- ALL WORKS FOR THIS PROJECT, EXCEPT THE ACTIVITIES THAT REQUIRE THE FULL DEPTH EXCAVATION FOR THE REMOVAL OF THE FOUNDATION OF THE TRAFFIC SIGNS OR PARTIAL REMOVAL OF THE FOUNDATION OF THE TRAFFIC SIGNS OR THE CLOSURE OF A TRAFFIC LANE FOR AT LEAST ONE DAY, SHALL BE PERFORMED DURING THE NIGHT, FROM MONDAY TO THURSDAY BETWEEN 11:30 PM TILL 4:30 AM. ALL TRAVELED LANES SHALL BE OPENED TO THE TRAFFIC DURING NON-WORKING HOURS.
- ALL WORKS FOR THIS PROJECT, EXCEPT THE ACTIVITIES THAT REQUIRE THE FULL DEPTH EXCAVATION FOR THE REMOVAL OF THE FOUNDATION OF THE TRAFFIC SIGNS OR PARTIAL REMOVAL OF THE FOUNDATION OF THE TRAFFIC SIGNS OR THE CLOSURE OF A TRAFFIC LANE FOR MORE THAN ONE DAY, SHALL BE PERFORMED DURING WEEKENDS, FROM FRIDAY AT 9:30 PM TO MONDAY AT 4:30 AM.
- ALL PROPOSED ACTIVITIES FOR THE PROJECT, WHICH AFFECTS THE NORMAL FLOW OF THE BUSES OWN BY THE PRMBA, SHALL BE COORDINATE WITH THE PRMBA PERSONNEL.
- ALL CONSTRUCTION SIGNS SHALL BE REMOVED AFTER CONSTRUCTION DAY ENDS.

## PHASES:

- INSTALL TEMPORARY SAFETY DEVICES AND CONSTRUCTION SIGNS AS INDICATED ON PLANS.
- THE INSTALLATION OPERATIONS SHALL BE PERFORMED WITHOUT THE MINIMUM INTERFERENCE TO TRAFFIC FLOW.
- TRAFFIC MOVEMENT ON EXISTING ROADWAY.
- REMOVAL OF EXISTING SIGNS AND POSTS IN THE BUS STOPS.
- INSTALL THE BUS STOPS SIGNS, POSTS AND SITE IMPROVEMENTS.
- REMOVE ALL THE CONSTRUCTION SIGNS AND SAFETY DEVICES AT THE COMPLETION OF THE WORK DAYS.

SIGNS COLORS		
SIGN CODE	BACKGROUND	LEGENDS/COLOR
W14, G20-24, W2-7A, W2-8	FLUORESCENT ORANGE	NON REFLECTIVE BLACK
R-1	REFLECTIVE RED	REFLECTIVE WHITE

Se Presenta El Expediente Técnico, Expediente Técnico 18-56, mediante el cual se propone el mejoramiento de la infraestructura vial en el trayecto que comprende desde el punto kilométrico 10.5 hasta el punto kilométrico 12.5 de la Ruta PR-20, en las Municipales de Carolina y San Juan, a través de los puntos kilométricos 10.5, 11.5, 12.5, 13.5, 14.5, 15.5, 16.5, 17.5, 18.5, 19.5, 20.5, 21.5, 22.5, 23.5, 24.5, 25.5, 26.5, 27.5, 28.5, 29.5, 30.5, 31.5, 32.5, 33.5, 34.5, 35.5, 36.5, 37.5, 38.5, 39.5, 40.5, 41.5, 42.5, 43.5, 44.5, 45.5, 46.5, 47.5, 48.5, 49.5, 50.5, 51.5, 52.5, 53.5, 54.5, 55.5, 56.5, 57.5, 58.5, 59.5, 60.5, 61.5, 62.5, 63.5, 64.5, 65.5, 66.5, 67.5, 68.5, 69.5, 70.5, 71.5, 72.5, 73.5, 74.5, 75.5, 76.5, 77.5, 78.5, 79.5, 80.5, 81.5, 82.5, 83.5, 84.5, 85.5, 86.5, 87.5, 88.5, 89.5, 90.5, 91.5, 92.5, 93.5, 94.5, 95.5, 96.5, 97.5, 98.5, 99.5, 100.5, 101.5, 102.5, 103.5, 104.5, 105.5, 106.5, 107.5, 108.5, 109.5, 110.5, 111.5, 112.5, 113.5, 114.5, 115.5, 116.5, 117.5, 118.5, 119.5, 120.5, 121.5, 122.5, 123.5, 124.5, 125.5, 126.5, 127.5, 128.5, 129.5, 130.5, 131.5, 132.5, 133.5, 134.5, 135.5, 136.5, 137.5, 138.5, 139.5, 140.5, 141.5, 142.5, 143.5, 144.5, 145.5, 146.5, 147.5, 148.5, 149.5, 150.5, 151.5, 152.5, 153.5, 154.5, 155.5, 156.5, 157.5, 158.5, 159.5, 160.5, 161.5, 162.5, 163.5, 164.5, 165.5, 166.5, 167.5, 168.5, 169.5, 170.5, 171.5, 172.5, 173.5, 174.5, 175.5, 176.5, 177.5, 178.5, 179.5, 180.5, 181.5, 182.5, 183.5, 184.5, 185.5, 186.5, 187.5, 188.5, 189.5, 190.5, 191.5, 192.5, 193.5, 194.5, 195.5, 196.5, 197.5, 198.5, 199.5, 200.5, 201.5, 202.5, 203.5, 204.5, 205.5, 206.5, 207.5, 208.5, 209.5, 210.5, 211.5, 212.5, 213.5, 214.5, 215.5, 216.5, 217.5, 218.5, 219.5, 220.5, 221.5, 222.5, 223.5, 224.5, 225.5, 226.5, 227.5, 228.5, 229.5, 230.5, 231.5, 232.5, 233.5, 234.5, 235.5, 236.5, 237.5, 238.5, 239.5, 240.5, 241.5, 242.5, 243.5, 244.5, 245.5, 246.5, 247.5, 248.5, 249.5, 250.5, 251.5, 252.5, 253.5, 254.5, 255.5, 256.5, 257.5, 258.5, 259.5, 260.5, 261.5, 262.5, 263.5, 264.5, 265.5, 266.5, 267.5, 268.5, 269.5, 270.5, 271.5, 272.5, 273.5, 274.5, 275.5, 276.5, 277.5, 278.5, 279.5, 280.5, 281.5, 282.5, 283.5, 284.5, 285.5, 286.5, 287.5, 288.5, 289.5, 290.5, 291.5, 292.5, 293.5, 294.5, 295.5, 296.5, 297.5, 298.5, 299.5, 300.5, 301.5, 302.5, 303.5, 304.5, 305.5, 306.5, 307.5, 308.5, 309.5, 310.5, 311.5, 312.5, 313.5, 314.5, 315.5, 316.5, 317.5, 318.5, 319.5, 320.5, 321.5, 322.5, 323.5, 324.5, 325.5, 326.5, 327.5, 328.5, 329.5, 330.5, 331.5, 332.5, 333.5, 334.5, 335.5, 336.5, 337.5, 338.5, 339.5, 340.5, 341.5, 342.5, 343.5, 344.5, 345.5, 346.5, 347.5, 348.5, 349.5, 350.5, 351.5, 352.5, 353.5, 354.5, 355.5, 356.5, 357.5, 358.5, 359.5, 360.5, 361.5, 362.5, 363.5, 364.5, 365.5, 366.5, 367.5, 368.5, 369.5, 370.5, 371.5, 372.5, 373.5, 374.5, 375.5, 376.5, 377.5, 378.5, 379.5, 380.5, 381.5, 382.5, 383.5, 384.5, 385.5, 386.5, 387.5, 388.5, 389.5, 390.5, 391.5, 392.5, 393.5, 394.5, 395.5, 396.5, 397.5, 398.5, 399.5, 400.5, 401.5, 402.5, 403.5, 404.5, 405.5, 406.5, 407.5, 408.5, 409.5, 410.5, 411.5, 412.5, 413.5, 414.5, 415.5, 416.5, 417.5, 418.5, 419.5, 420.5, 421.5, 422.5, 423.5, 424.5, 425.5, 426.5, 427.5, 428.5, 429.5, 430.5, 431.5, 432.5, 433.5, 434.5, 435.5, 436.5, 437.5, 438.5, 439.5, 440.5, 441.5, 442.5, 443.5, 444.5, 445.5, 446.5, 447.5, 448.5, 449.5, 450.5, 451.5, 452.5, 453.5, 454.5, 455.5, 456.5, 457.5, 458.5, 459.5, 460.5, 461.5, 462.5, 463.5, 464.5, 465.5, 466.5, 467.5, 468.5, 469.5, 470.5, 471.5, 472.5, 473.5, 474.5, 475.5, 476.5, 477.5, 478.5, 479.5, 480.5, 481.5, 482.5, 483.5, 484.5, 485.5, 486.5, 487.5, 488.5, 489.5, 490.5, 491.5, 492.5, 493.5, 494.5, 495.5, 496.5, 497.5, 498.5, 499.5, 500.5, 501.5, 502.5, 503.5, 504.5, 505.5, 506.5, 507.5, 508.5, 509.5, 510.5, 511.5, 512.5, 513.5, 514.5, 515.5, 516.5, 517.5, 518.5, 519.5, 520.5, 521.5, 522.5, 523.5, 524.5, 525.5, 526.5, 527.5, 528.5, 529.5, 530.5, 531.5, 532.5, 533.5, 534.5, 535.5, 536.5, 537.5, 538.5, 539.5, 540.5, 541.5, 542.5, 543.5, 544.5, 545.5, 546.5, 547.5, 548.5, 549.5, 550.5, 551.5, 552.5, 553.5, 554.5, 555.5, 556.5, 557.5, 558.5, 559.5, 560.5, 561.5, 562.5, 563.5, 564.5, 565.5, 566.5, 567.5, 568.5, 569.5, 570.5, 571.5, 572.5, 573.5, 574.5, 575.5, 576.5, 577.5, 578.5, 579.5, 580.5, 581.5, 582.5, 583.5, 584.5, 585.5, 586.5, 587.5, 588.5, 589.5, 590.5, 591.5, 592.5, 593.5, 594.5, 595.5, 596.5, 597.5, 598.5, 599.5, 600.5, 601.5, 602.5, 603.5, 604.5, 605.5, 606.5, 607.5, 608.5, 609.5, 610.5, 611.5, 612.5, 613.5, 614.5, 615.5, 616.5, 617.5, 618.5, 619.5, 620.5, 621.5, 622.5, 623.5, 624.5, 625.5, 626.5, 627.5, 628.5, 629.5, 630.5, 631.5, 632.5, 633.5, 634.5, 635.5, 636.5, 637.5, 638.5, 639.5, 640.5, 641.5, 642.5, 643.5, 644.5, 645.5, 646.5, 647.5, 648.5, 649.5, 650.5, 651.5, 652.5, 653.5, 654.5, 655.5, 656.5, 657.5, 658.5, 659.5, 660.5, 661.5, 662.5, 663.5, 664.5, 665.5, 666.5, 667.5, 668.5, 669.5, 670.5, 671.5, 672.5, 673.5, 674.5, 675.5, 676.5, 677.5, 678.5, 679.5, 680.5, 681.5, 682.5, 683.5, 684.5, 685.5, 686.5, 687.5, 688.5, 689.5, 690.5, 691.5, 692.5, 693.5, 694.5, 695.5, 696.5, 697.5, 698.5, 699.5, 700.5, 701.5, 702.5, 703.5, 704.5, 705.5, 706.5, 707.5, 708.5, 709.5, 710.5, 711.5, 712.5, 713.5, 714.5, 715.5, 716.5, 717.5, 718.5, 719.5, 720.5, 721.5, 722.5, 723.5, 724.5, 725.5, 726.5, 727.5, 728.5, 729.5, 730.5, 731.5, 732.5, 733.5, 734.5, 735.5, 736.5, 737.5, 738.5, 739.5, 740.5, 741.5, 742.5, 743.5, 744.5, 745.5, 746.5, 747.5, 748.5, 749.5, 750.5, 751.5, 752.5, 753.5, 754.5, 755.5, 756.5, 757.5, 758.5, 759.5, 760.5, 761.5, 762.5, 763.5, 764.5, 765.5, 766.5, 767.5, 768.5, 769.5, 770.5, 771.5, 772.5, 773.5, 774.5, 775.5, 776.5, 777.5, 778.5, 779.5, 780.5, 781.5, 782.5, 783.5, 784.5, 785.5, 786.5, 787.5, 788.5, 789.5, 790.5, 791.5, 792.5, 793.5, 794.5, 795.5, 796.5, 797.5, 798.5, 799.5, 800.5, 801.5, 802.5, 803.5, 804.5, 805.5, 806.5, 807.5, 808.5, 809.5, 810.5, 811.5, 812.5, 813.5, 814.5, 815.5, 816.5, 817.5, 818.5, 819.5, 820.5, 821.5, 822.5, 823.5, 824.5, 825.5, 826.5, 827.5, 828.5, 829.5, 830.5, 831.5, 832.5, 833.5, 834.5, 835.5, 836.5, 837.5, 838.5, 839.5, 840.5, 841.5, 842.5, 843.5, 844.5, 845.5, 846.5, 847.5, 848.5, 849.5, 850.5, 851.5, 852.5, 853.5, 854.5, 855.5, 856.5, 857.5, 858.5, 859.5, 860.5, 861.5, 862.5, 863.5, 864.5, 865.5, 866.5, 867.5, 868.5, 869.5, 870.5, 871.5, 872.5, 873.5, 874.5, 875.5, 876.5, 877.5, 878.5, 879.5, 880.5, 881.5, 882.5, 883.5, 884.5, 885.5, 886.5, 887.5, 888.5, 889.5, 890.5, 891.5, 892.5, 893.5, 894.5, 895.5, 896.5, 897.5, 898.5, 899.5, 900.5, 901.5, 902.5, 903.5, 904.5, 905.5, 906.5, 907.5, 908.5, 909.5, 910.5, 911.5, 912.5, 913.5, 914.5, 915.5, 916.5, 917.5, 918.5, 919.5, 920.5, 921.5, 922.5, 923.5, 924.5, 925.5, 926.5, 927.5, 928.5, 929.5, 930.5, 931.5, 932.5, 933.5, 934.5, 935.5, 936.5, 937.5, 938.5, 939.5, 940.5, 941.5, 942.5, 943.5, 944.5, 945.5, 946.5, 947.5, 948.5, 949.5, 950.5, 951.5, 952.5, 953.5, 954.5, 955.5, 956.5, 957.5, 958.5, 959.5, 960.5, 961.5, 962.5, 963.5, 964.5, 965.5, 966.5, 967.5, 968.5, 969.5, 970.5, 971.5, 972.5, 973.5, 974.5, 975.5, 976.5, 977.5, 978.5, 979.5, 980.5, 981.5, 982.5, 983.5, 984.5, 985.5, 986.5, 987.5, 988.5, 989.5, 990.5, 991.5, 992.5, 993.5, 994.5, 995.5, 996.5, 997.5, 998.5, 999.5, 1000.5, 1001.5, 1002.5, 1003.5, 1004.5, 1005.5, 1006.5, 1007.5, 1008.5, 1009.5, 1010.5, 1011.5, 1012.5, 1013.5, 1014.5, 1015.5, 1016.5, 1017.5, 1018.5, 1019.5, 1020.5, 1021.5, 1022.5, 1023.5, 1024.5, 1025.5, 1026.5, 1027.5, 1028.5, 1029.5, 1030.5, 1031.5, 1032.5, 1033.5, 1034.5, 1035.5, 1036.5, 1037.5, 1038.5, 1039.5, 1040.5, 1041.5, 1042.5, 1043.5, 1044.5, 1045.5, 1046.5, 1047.5, 1048.5, 1049.5, 1050.5, 1051.5, 1052.5, 1053.5, 1054.5, 1055.5, 1056.5, 1057.5, 1058.5, 1059.5, 1060.5, 1061.5, 1062.5, 1063.5, 1064.5, 1065.5, 1066.5, 1067.5, 1068.5, 1069.5, 1070.5, 1071.5, 1072.5, 1073.5, 1074.5, 1075.5, 1076.5, 1077.5, 1078.5, 1079.5, 1080.5, 1081.5, 1082.5, 1083.5, 1084.5, 1085.5, 1086.5, 1087.5, 1088.5, 1089.5, 1090.5, 1091.5, 1092.5, 1093.5, 1094.5, 1095.5, 1096.5, 1097.5, 1098.5, 1099.5, 1100.5, 1101.5, 1102.5, 1103.5, 1104.5, 1105.5, 1106.5, 1107.5, 1108.5, 1109.5, 1110.5, 1111.5, 1112.5, 1113.5, 1114.5, 1115.5, 1116.5, 1117.5, 1118.5, 1119.5, 1120.5, 1121.5, 1122.5, 1123.5, 1124.5, 1125.5, 1126.5, 1127.5, 1128.5, 1129.5, 1130.5, 1131.5, 1132.5, 1133.5, 1134.5, 1135.5, 1136.5, 1137.5, 1138.5, 1139.5, 1140.5, 1141.5, 1142.5, 1143.5, 1144.5, 1145.5, 1146.5, 1147.5, 1148.5, 1149.5, 1150.5, 1151.5, 1152.5, 1153.5, 1154.5, 1155.5, 1156.5, 1157.5, 1158.5, 1159.5, 1160.5, 1161.5, 1162.5, 1163.5, 1164.5, 1165.5, 1166.5, 1167.5, 1168.5, 1169.5, 1170.5, 1171.5, 1172.5, 1173.5, 1174.5, 1175.5, 1176.5, 1177.5, 1178.5, 1179.5, 1180.5, 1181.5, 1182.5, 1183.5, 1184.5, 1185.5, 1186.5, 1187.5, 1188.5, 1189.5, 1190.5, 1191.5, 1192.5, 1193.5, 1194.5, 1195.5, 1196.5, 1197.5, 1198.5, 1199.5, 1200.5, 1201.5, 1202.5, 1203.5, 1204.5, 1205.5, 1206.5, 1207.5, 1208.5, 1209.5, 1210.5, 1211.5, 1212.5, 1213.5, 1214.5, 1215.5, 1216.5, 1217.5, 1218.5, 1219.5, 1220.5, 1221.5, 1222.5, 1223.5, 1224.5, 1225.5, 1226.5, 1227.5, 1228.5, 1229.5, 1230.5, 1231.5, 1232.5, 1233.5, 1234.5, 1235.5, 1236.5, 1237.5, 1238.5, 1239.5, 1240.5, 1241.5, 1242.5, 1243.5, 1244.5, 1245.5, 1246.5, 1247.5, 1248.5, 1249.5, 1250.5, 1251.5, 1252.5, 1253.5, 1254.5, 1255.5, 1256.5, 1257.5, 1258.5, 1259.5, 1260.5, 1261.5, 1262.5, 1263.5, 1264.5, 1265.5, 1266.5, 1267.5, 1268.5, 1269.5, 1270.5, 1271.5, 1272.5, 1273.5, 1274.5, 1275.5, 1276.5, 1277.5, 1278.5, 1279.5, 1280.5, 1281.5, 1282.5, 1283.5, 1284.5, 1285.5, 1286.5, 1287.5, 1288.5, 1289.5, 1290.5, 1291.5, 1292.5, 1293.5, 1294.5, 1295.5, 1296.5, 1297.5, 1298.5, 1299.5, 1300.5, 1301.5, 1302.5, 1303.5, 1304.5, 1305.5, 1306.5, 1307.5, 1308.5, 1309.5, 1310.5, 1311.5, 1312.5, 1313.5, 1314.5, 1315.5, 1316.5, 1317.5, 1318.5, 1319.5, 1320.5, 1321.5, 1322.5, 1323.5, 1324.5, 1325.5, 1326.5, 1327.5, 1328.5, 1329.5, 1330.5, 1331.5, 1332.5, 1333.5, 1334.5, 1335.5, 1336.5, 1337.5, 1338.5, 1339.5, 1340.5, 1341.5, 1342.5, 1343.5, 1344.5, 1345.5, 1346.5, 1347.5, 1348.5, 1349.5, 1350.5, 1351.5, 1352.5, 1353.5, 1354.5, 1355.5, 1356.5, 1357.5, 1358.5, 1359.5, 1360.5, 1361.5, 1362.5, 1363.5, 1364.5, 1365.5, 1366.5, 1367.5, 1368.5, 1369.5, 1370.5, 1371.5, 1372.5, 1373.5, 1374.5, 1375.5, 1376.5, 1377.5, 1378.5, 1379.5, 1380.5, 1381.5, 1382.5, 1383.5, 1384.5, 1385.5, 1386.5, 1387.5, 1388.5, 1389.5, 1390.5, 1391.5, 1392.5, 1393.5, 1394.5, 1395.5, 1396.5, 1397.5, 1398.5, 1399.5, 1400.5, 1401.5, 1402.5, 1



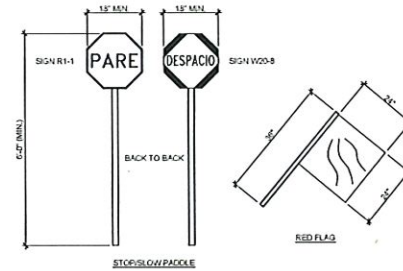




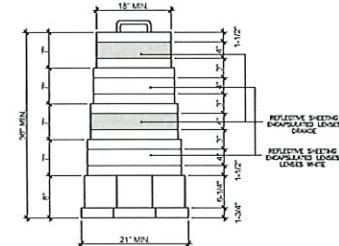
# ROUTE 5 | BUS STOPS

## TEMPORARY SIGN DATA

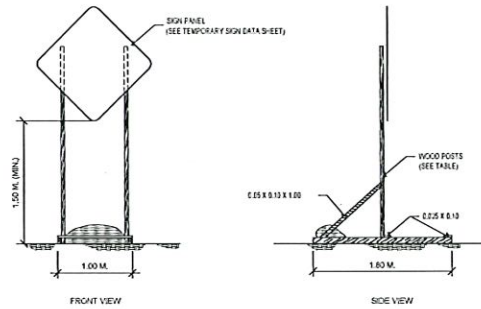
CODE NUMBER	LOCATION NUMBER	SIGN CODE	LEGEND	SIZE OF SIGN PANELS	OVERHEAD STRUCTURE TYPE	REFERENCE MANUAL	TOTAL ITEM
1	1, 5	W21-4		30' x 36"	N/A	SEE MUTCO 2009 EDITION	1
2	2	W21-4		30' x 36"	N/A	SEE MUTCO 2009 EDITION	1
3	3	W21-4		30' x 36"	N/A	SEE MUTCO 2009 EDITION	1
4	4, 6	G39-24		30' x 24"	N/A	SEE MUTCO 2009 EDITION	2
5	2, 9	W21-4		30' x 36"	N/A	SEE MUTCO 2009 EDITION	2
6	3, 10	W21-4		30' x 36"	N/A	SEE MUTCO 2009 EDITION	2
7	7, 11	W20-7A		30' x 30"	N/A	SEE MUTCO 2009 EDITION	1
8	STOP-SLOW PADDLE	81-1 W20-8		18' x 15"	N/A	LIGHT WEIGHT PADDLE	1



HAND-SIGNALING DEVICES BY FLAGGERS NOT TO SCALE



REFLECTORIZED PLASTIC CONE



TEMPORARY WOOD PORTABLE SUPPORT FOR CONSTRUCTION SIGNS NOT TO SCALE

TEMPORARY WOOD PORTABLE SUPPORT TABLE

WOOD POST SIZES	MAXIMUM SIGN PANEL AREA (SQUARE METERS)		
MT. X MT. N X N	1 POST	2 POSTS	
0.10 x 0.10	4 X 4	1.00	2.00
0.10 x 0.15	4 X 6	N/A	3.00
0.15 x 0.15	6 X 6	N/A	4.50
0.15 x 0.20	6 X 8	N/A	8.00

Se permite el Logotipo, Agencia Autoridad 10-54, así como que sea el profesional con certificación, diseño y a preparar esta planilla y los especificaciones según las normas. También permite que cualquier que diseño planilla y especificaciones según con las disposiciones administrativas del Gobierno de Carolina. Los Equipos de Materiales de la Autoridad de Transportación Pública de Carolina. Autoridad de Transportación Pública de Carolina. No se permite que cualquier otro diseño que sea diferente de los hechos que en esta planilla por disposiciones y que no se permite que sea por un, una agencia o empresa, a por otro persona con el consentimiento de la Autoridad de Transportación Pública de Carolina.

**EN.Z.O.**  
engineering, psc.  
PO Box 304B, PMB 427  
GURABO, PR 00778  
TEL. (787) 649-6200 | LOPEZBAEZ@ENZOGROUPLLC.ORG



HERNANDEZ LOPEZ BAEZ, PE VIEW  
LIC. 11354PE

**BUS STOP SIGNAGE PROJECT - PHASE 1**  
**ROUTE 5**  
**MAINTENANCE OF TRAFFIC DETAILS**  
FROM COVADONGA TERMINAL TO ITURREGUI TERMINAL  
MUNICIPALITIES OF SAN JUAN AND CAROLINA

AUTORIDAD  
METROPOLITANA DE  
AUTOBUSES



METROPOLITANA BUS AUTHORITY  
BOX 105349  
SAN JUAN, PR 00910-5349

REVISION	
DATE: JUNE 2022	DRAWN BY:
CHECKED BY: BEV	ABZ
DWG. TYPE: MOT-1.04	SHEET NO. 6 OF 88







# ROUTE 5 | BUS STOP #10



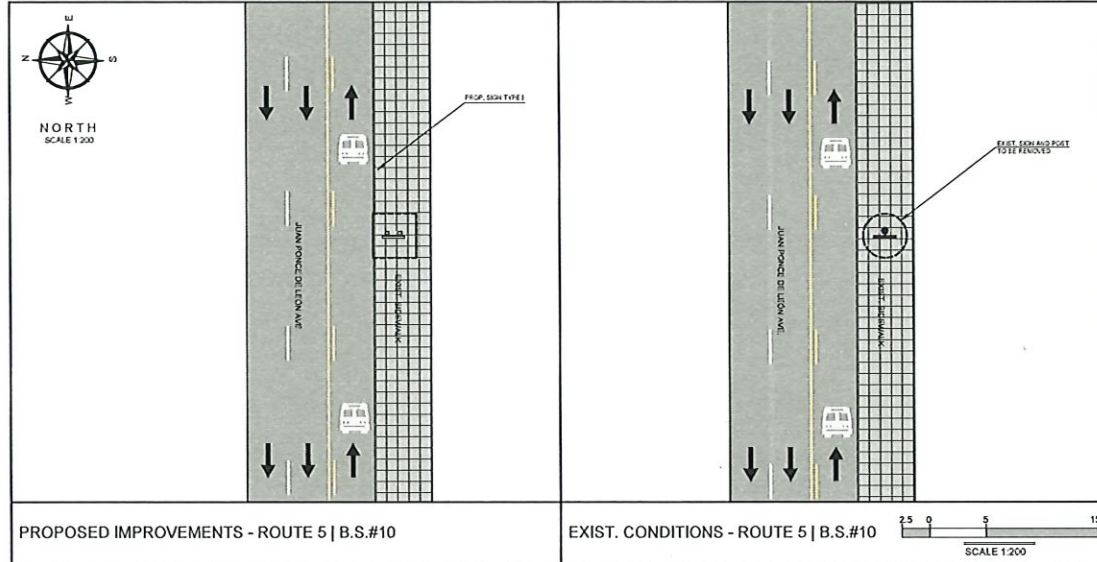
PHOTO - 1



PHOTO - 2

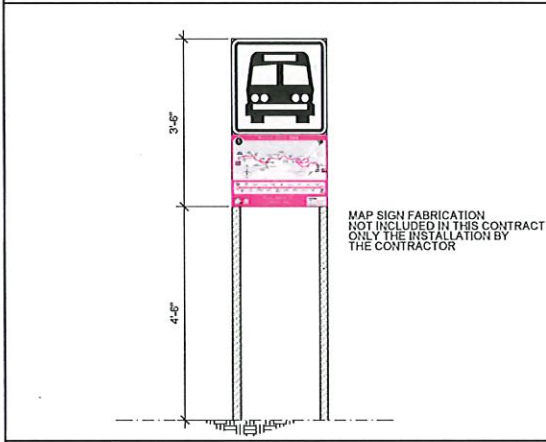


PHOTO - 3- PROPOSED SIGN LOCATION



PROPOSED IMPROVEMENTS - ROUTE 5 | B.S.#10

EXIST. CONDITIONS - ROUTE 5 | B.S.#10



PROPOSED SIGN TYPE I

NOT TO SCALE

**LEGEND**

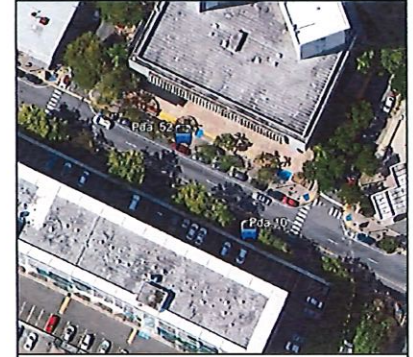
- PROP. SIGN TYPE I
- PROP. SIGN TYPE B
- PROP. SIGN TYPE II
- PROP. SIGN TYPE IV
- EXIST. SIGN
- PRIMER EXCLUSIVE LANE (VMA LANE)
- TRAFFIC DIRECTION

**NOTES**

1. THE CONTRACTOR SHALL OBTAIN THE EXCAVATION, DEMOLITION AND PILES PERMITTING FROM THE LOCAL AGENCIES OF PERMITS/PERFECT AND PUBLIC WORKS PRIOR TO THE BEGINNING OF EACH WORK SITE DURING THE PROJECT.
2. THE CONTRACTOR SHALL CONSULT THE PROJECT ENGINEER BEFORE THE INSTALLATION OF EACH SIGN.
3. THE CONTRACTOR SHALL REMOVE THE EXISTING SIGN AND TRAFFIC POSTS. THESE STRUCTURES SHALL BE DELIVERED TO THE PRIMA PERSONAL.
4. THE CONTRACTOR SHALL REMOVE THE EXISTING POST FOUNDATION.
5. THE CONTRACTOR SHALL INSTALL THE PROPOSED SIGN IN PLACE. THE CONTRACTOR SHALL COORDINATE THE INSTALLATION WITH THE MUNICIPALITY OF SAN JUAN ABOUT THE SHIELD FILE TO INSTALL BUS PILES TO BE IN LINE TO PILES TO BE.
6. THE MINIMUM DISTANCE OF THE LATERAL LOCATION OF THE EDGE OF THE SIGN TO THE EXISTING ROAD CURB SHALL BE 8.00 M.



LOCATION PLAN SCALE 1:20,000 18°27'20.63\"/>



AERIAL PHOTO SCALE 1:1,000 GOOGLE EARTH VERSION 7.3.4.6642 PRO

La Planeta E. Lopez Baez, Ingeniero, licencia No. 10.74, certifica que este proyecto fue confeccionado, diseñado y preparado para ser presentado a las autoridades competentes. Asimismo certifica que este plan y sus modificaciones cumplen con los requisitos establecidos en el Reglamento General de Equipamiento Urbano de la Planificación y Construcción de Carreteras, Vías y Obras de Infraestructura y Construcción de Obras de Infraestructura. Asimismo certifica que este plan y sus modificaciones cumplen con los requisitos establecidos en el Reglamento de Equipamiento Urbano de la Planificación y Construcción de Carreteras, Vías y Obras de Infraestructura y Construcción de Obras de Infraestructura. Asimismo certifica que este plan y sus modificaciones cumplen con los requisitos establecidos en el Reglamento de Equipamiento Urbano de la Planificación y Construcción de Carreteras, Vías y Obras de Infraestructura y Construcción de Obras de Infraestructura.

**EN.Z.O.**  
engineering, psc.  
PO BOX 3040, PHB 427  
GURABO, PR 00778  
TEL. (787) 649-6200 | LOPEZBAEZ@ENZODRUPLLC.ORG



**BUS STOP SIGNAGE PROJECT - PHASE 1**  
**ROUTE 5 | BUS STOP #10**  
FROM SAN JUAN TO ITURREGUI AVENUE  
EXCLUSIVE LANE JUAN PONCE DE LEÓN AVE. BEFORE  
OPPOSITE SIDE OF MADRID ST. MUNICIPALITY OF SAN JUAN

**AUTORIDAD METROPOLITANA DE AUTOBUSES**

METROPOLITAN BUS AUTHORITY  
BOX 195M9  
SAN JUAN, PR 00919-5349

REVISION	
DATE	JUNE 2022
CHECKED BY	DRAWN BY
BEV	ABZ
DWG. TYPE	SHEET NO.
TS-1.02	8 OF 8









































# ROUTE 5 | BUS STOP #24



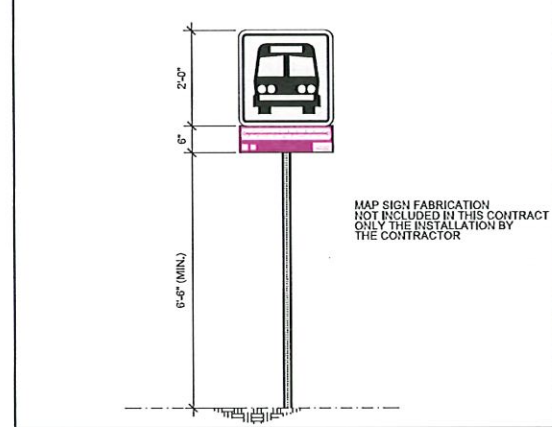
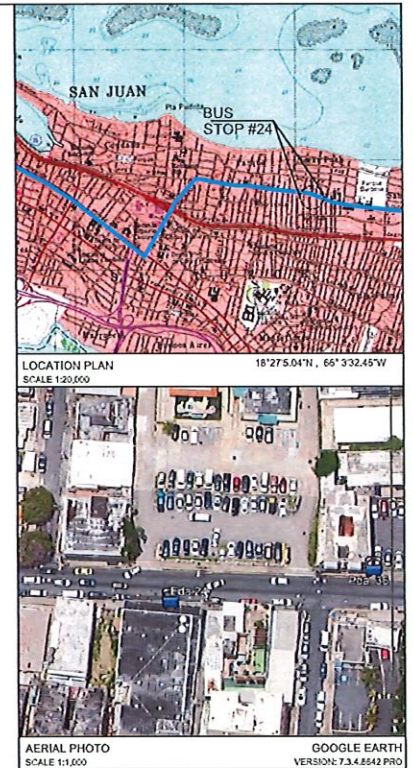
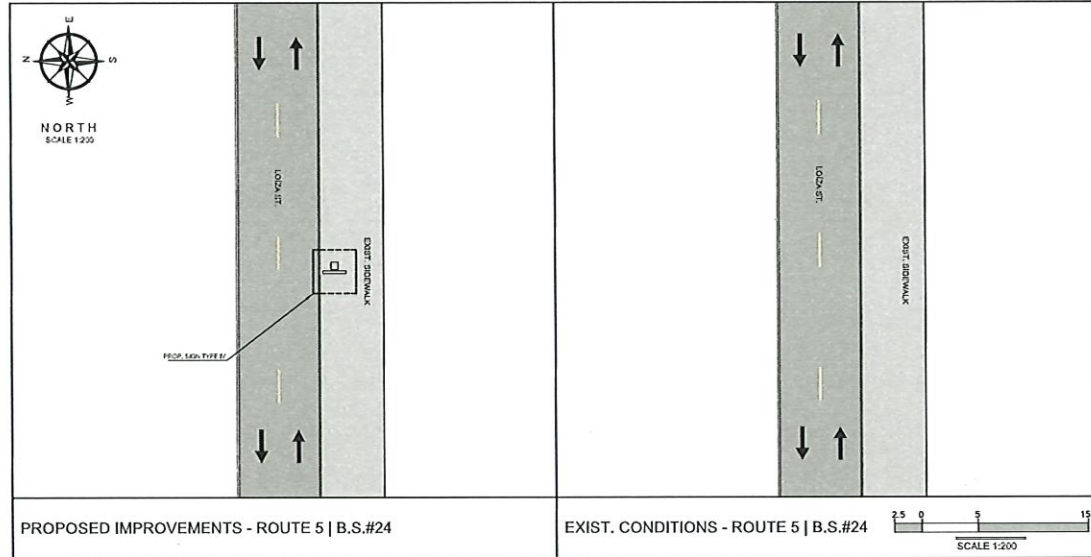
PHOTO - 1



PHOTO - 2



PHOTO - 3: PROPOSED SIGN LOCATION



PROPOSED SIGN TYPE IV NOT TO SCALE

**LEGEND:**

- PROP. SIGN TYPE I
- PROP. SIGN TYPE II
- PROP. SIGN TYPE III
- PROP. SIGN TYPE IV
- EXIST. SIGN
- FMSA EXCLUSIVE LANE (MM LANE)
- TRAFFIC DIRECTION

**NOTES:**

1. THE CONTRACTOR SHALL OBTAIN THE NECESSARY DEVELOPMENT AND PERMITS FROM THE DEPARTMENT OF TRANSPORTATION AND PUBLIC WORKS PRIOR TO THE BEGINNING OF EACH WORK SITE OF THIS PROJECT.
2. THE CONTRACTOR SHALL CONSULT THE PROJECT ENGINEER BEFORE THE INSTALLATION OF EACH STRUCTURE.
3. THE MINIMAL DISTANCE OF THE LATERAL LOCATION OF THE EDGE OF THE SIGN TO THE EXISTING ROAD CURB SHALL BE SIX (6) FEET.
4. THE CONTRACTOR SHALL INSTALL THE PROPOSED SIGN IN THE SIDEWALK AREA, REFER TO PHOTO 3.
5. THE CONTRACTOR SHALL TAKE INTO ACCOUNT THE LEVEL OF THE EXISTING ADJACENT UTILITIES IN THE AREA BEFORE THE WORK PROCEEDS.

**EN.Z.O.**  
Engineering, psc.  
PO Box 3040, PMB 427  
GURABO, PR 00778  
TEL. (787) 649-6200 | LOPEZBAEZ@ENZODRUPLLC.ORG

HERNAN E. LOPEZ BAEZ, FE MEM  
LIC. 18 546

**BUS STOP SIGNAGE PROJECT - PHASE 1**  
**ROUTE 5 | BUS STOP #24**  
FROM SAN JUAN TO ITURREGUI AVENUE  
LOIZA ST. BEFORE JEFFERSON ST.  
MUNICIPALITY OF SAN JUAN

**METROPOLITANA DE AUTOBUSES**  
AUTORIDAD DE AUTOBUSES

METROPOLITAN BUS AUTHORITY  
BOX 136349  
SAN JUAN, PR 00919-6349

REVISION	
DATE: JUNE 2022	DRAW BY:
CHECKED BY: BEV	ABZ
DWG. TYPE:	SHEET NO. 19
TS-1.13	OF





# ROUTE 5 | BUS STOP #26



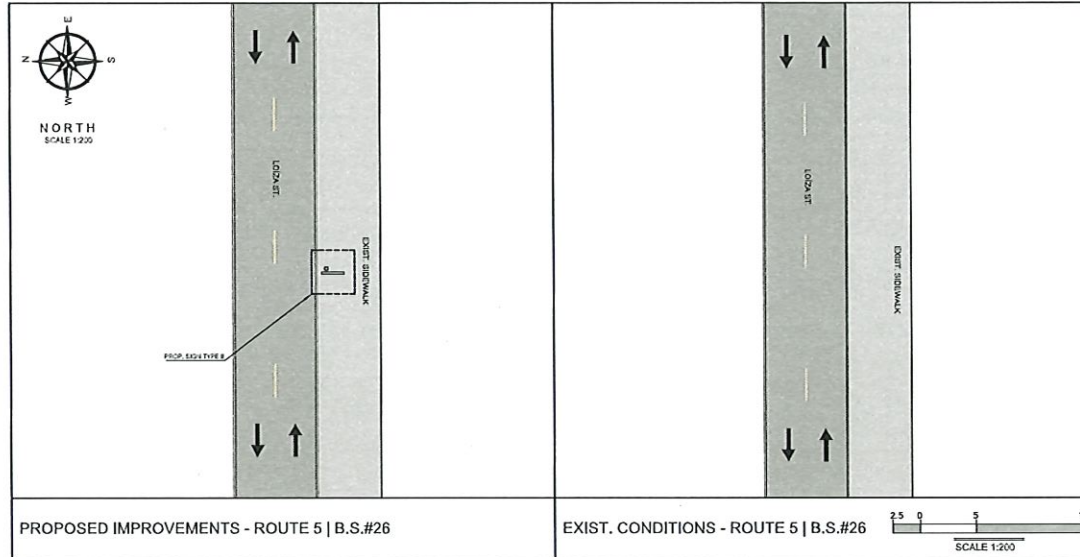
PHOTO - 1



PHOTO - 2

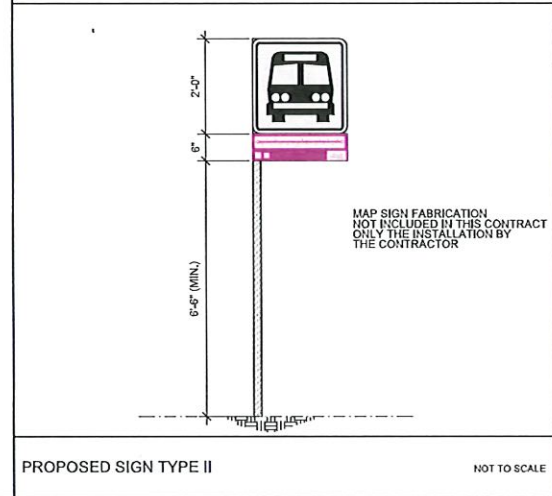


PHOTO - 3: PROPOSED SIGN LOCATION



PROPOSED IMPROVEMENTS - ROUTE 5 | B.S.#26

EXIST. CONDITIONS - ROUTE 5 | B.S.#26



PROPOSED SIGN TYPE II

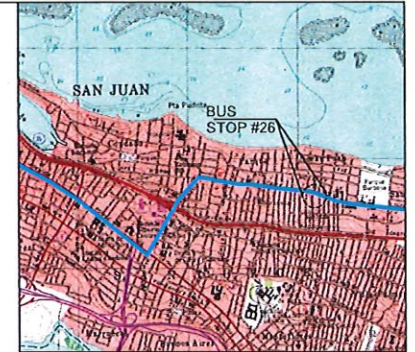
NOT TO SCALE

### LEGEND:

- PROP. SIGN TYPE I
- PROP. SIGN TYPE II
- PROP. SIGN TYPE III
- PROP. SIGN TYPE IV
- EXIST. SIGN
- PAVED EXCLUSIVE LANE (Mk LANE)
- TRAFFIC DIRECTION

### NOTES:

1. THE CONTRACTOR SHALL OBTAIN THE EXCAVATION, DEMOLITION AND PERMITS PERMITTING FROM THE DEPARTMENT OF TRANSPORTATION AND PUBLIC WORKS PRIOR TO THE BEGINNING OF EACH WORK SITE OF THE PROJECT.
2. THE CONTRACTOR SHALL CONSULT THE PROJECT ENGINEER BEFORE THE INSTALLATION OF EACH STRUCTURE.
3. THE CONTRACTOR SHALL INSTALL THE PROPOSED SIGN IN SEVERAL FEET IN FRONT OF THE EXISTING POLE, REFER TO PHOTO 4.
4. THE NUMBER OF FEET OF THE LATERAL LOCATION OF THE EDGE OF THE SIGN TO THE EXISTING ROAD EDGE SHALL BE 5 FT.
5. THE CONTRACTOR SHALL TAKE INTO ACCOUNT THE LEVEL OF THE EXISTING MANHOLE UTILITY IN THE AREA BEFORE THE SIGN PROCEEDS.



LOCATION PLAN SCALE 1:20,000 18°27'3.65\"/>



AERIAL PHOTO SCALE 1:1,000 GOOGLE EARTH VERSION: 7.3.4.8542 PRO

**EN.Z.O.**  
Engineering, psc.

PO BOX 3040, PMB 427  
GURABO, PR 00778  
TEL. (787) 649-6200 | LOPEZBAEZ@ENZOBROPLLC.COM



HERNAN E. LOPEZ BAEZ, PE MEM  
L.E. 9546

## BUS STOP SIGNAGE PROJECT - PHASE 1 ROUTE 5 | BUS STOP #26

FROM SAN JUAN TO ITURREGUI AVENUE  
LOIZA ST. BEFORE MARÍA MOCZO ST.  
MUNICIPALITY OF SAN JUAN

AUTORIDAD  
**METROPOLITANA DE  
AUTOBUSES**



METROPOLITAN BUS AUTHORITY  
BOX 105349  
SAN JUAN, PR 00919-0349

REVISION	
DATE: JUNE 2022	DRAW BY:
CHECKED BY: BEV	ABZ
DWG. TYPE:	SHEET NO. 21
TS-1.15	OF 88



# ROUTE 5 | BUS STOP #27



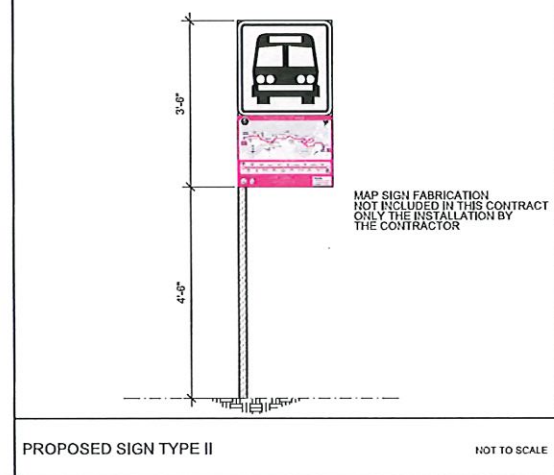
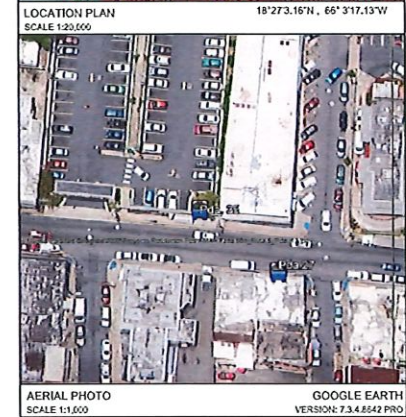
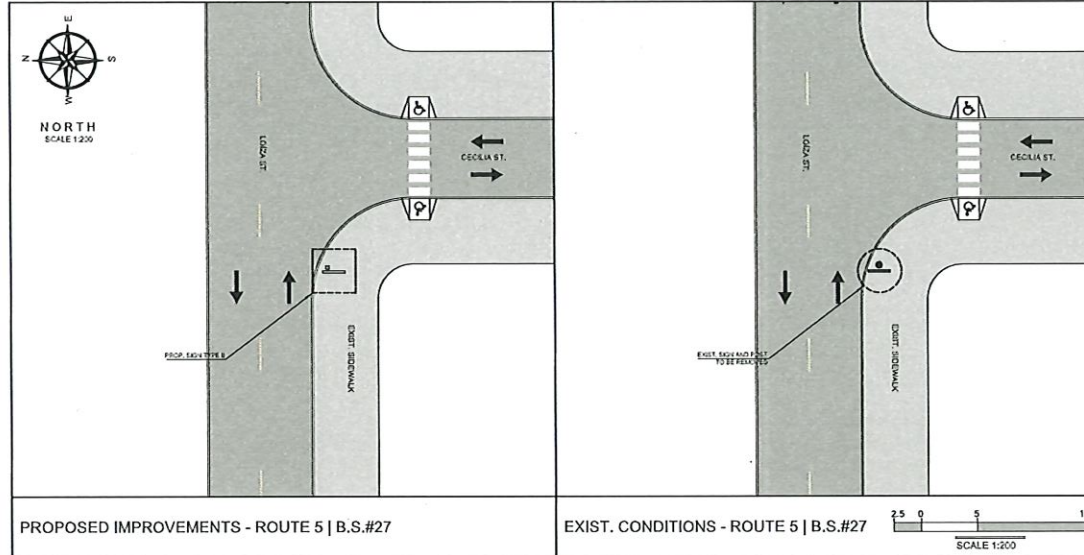
PHOTO - 1



PHOTO - 2



PHOTO - 3: PROPOSED SIGN LOCATION



- LEGEND:**
- PROP. SIGN TYPE I
  - PROP. SIGN TYPE B
  - PROP. SIGN TYPE III
  - PROP. SIGN TYPE IV
  - EXIST. SIGN
  - PRIMA EXCLUSIVE LANE (AMA LANE)
  - TRAFFIC DIRECTION
- NOTES:**
- THE CONTRACTOR SHALL OBTAIN THE EXCAVATION, DEMOLITION AND PERMITS PERMITTING FROM THE DEPARTMENT OF TRANSPORTATION AND PUBLIC WORKS PRIOR TO THE BEGINNING OF EACH WORK SITE OF THIS PROJECT.
  - THE CONTRACTOR SHALL CONSULT THE PROJECT ENGINEER BEFORE THE INSTALLATION OF EACH STRUCTURE.
  - THE CONTRACTOR SHALL REMOVE THE EXISTING SIGN AND TRAFFIC POST. THESE STRUCTURES SHALL BE DELIVERED TO THE PRIMA PRODIGENAL.
  - THE CONTRACTOR SHALL REMOVE THE EXISTING POST FOR CONTROL.
  - THE VERTICAL DISTANCE OF THE LATERAL LOCATION OF THE EDGE OF THE SIGN TO THE EXISTING ROAD CURB SHALL BE 8 FT 6 IN.
  - THE CONTRACTOR SHALL TAKE INTO ACCOUNT THE LEVEL OF THE EXISTING NEPAL UTILITIES IN THE AREA BEFORE THE WORK PROCEEDS.
  - THE CONTRACTOR SHALL SET ALL THE PROPOSED SIGN IN EACH AREA REFER TO PHOTO #1.

**ENZO**  
engineering, psc.

PO BOX 3040, PMB 427  
GURASO, PR 00778  
TEL. (787) 649-6200 | LOPEZBAEZ@ENZODGROUPLLC.ORG



**BUS STOP SIGNAGE PROJECT - PHASE 1**  
**ROUTE 5 | BUS STOP #27**

FROM SAN JUAN TO ITURREGUI AVENUE  
LOÍZA ST. INT. SANTA CECILIA ST.  
MUNICIPALITY OF SAN JUAN



METROPOLITAN BUS AUTHORITY  
BOX 155349  
SAN JUAN, PR 00919-5349

REVISION	
DATE: JUNE 2022	DRAW BY: ABZ
CHECKED BY: BEV	SHEET NO. 22
DWG. TYPE: TS-1.16	OF 88

Yo Hernán E. López Baez Ingeniero Mecánico PE MEM, certifico que soy el profesional que certifico dichos proyectos y que soy el responsable de cualquier error que se produzca en el desarrollo de los mismos. Asimismo, certifico que soy el responsable de cualquier error que se produzca en el desarrollo de los mismos. Asimismo, certifico que soy el responsable de cualquier error que se produzca en el desarrollo de los mismos.

















# ROUTE 5 | BUS STOP #50



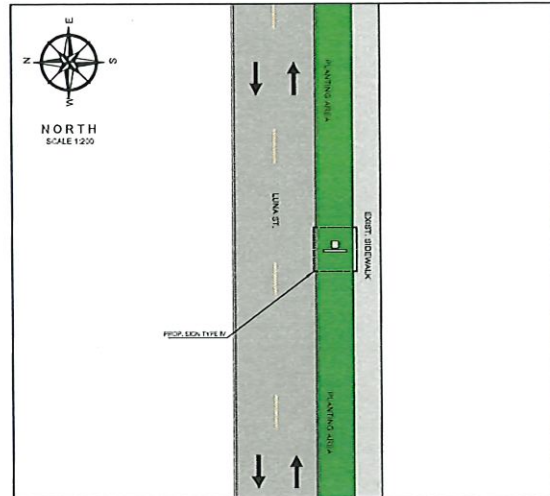
PHOTO - 1



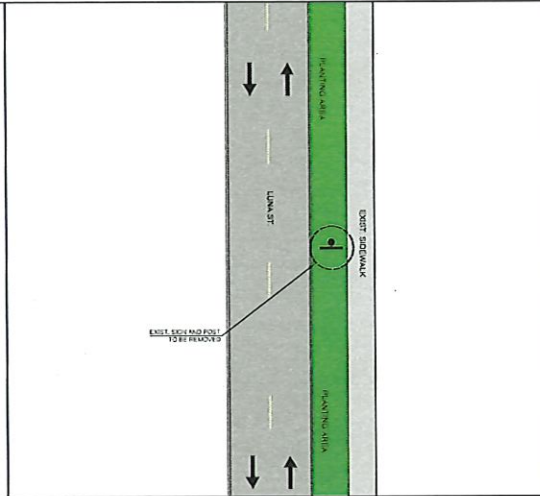
PHOTO - 2



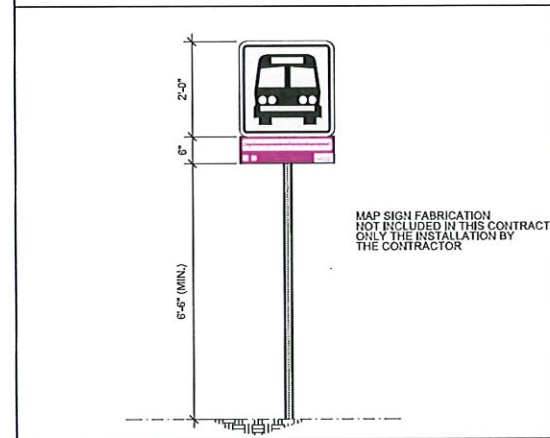
PHOTO - 3: PROPOSED SIGN LOCATION



PROPOSED IMPROVEMENTS - ROUTE 5 | B.S.#50



EXIST. CONDITIONS - ROUTE 5 | B.S.#50



PROPOSED SIGN TYPE IV

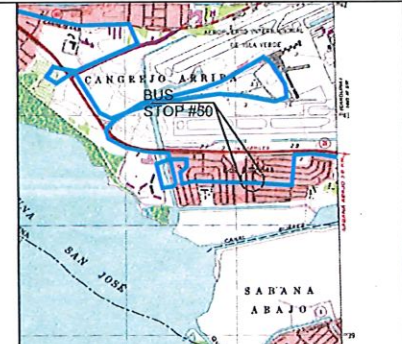
NOT TO SCALE

**LEGEND:**

- PROP. SIGN TYPE I
- PROP. SIGN TYPE II
- PROP. SIGN TYPE III
- PROP. SIGN TYPE IV
- EXIST. SIGN
- PRMBA EXCLUSIVE LANE (MIA LANE)
- TRAFFIC DIRECTION

**NOTE:**

1. THE CONTRACTOR SHALL OBTAIN THE NECESSARY PERMITS FROM THE LOCAL GOVT. OF TRANSPORTATION AND PUBLIC WORKS PRIOR TO THE BEGINNING OF EACH WORK SITE DURING THE PROJECT.
2. THE CONTRACTOR SHALL CONSULT THE PROJECT ENGINEER BEFORE THE INSTALLATION OF EACH STRUCTURE.
3. THE CONTRACTOR SHALL REMOVE THE EXISTING SIGN AND TRAFFIC POLE. THESE STRUCTURES SHALL BE CULLED TO THE PRMBA PROGRAMS.
4. THE CONTRACTOR SHALL REMOVE THE EXISTING POLE FOUNDATION.
5. THE CONTRACTOR SHALL INSTALL THE PROPOSED SIGN IN THE EXISTING AREA 30 FT. FROM THE EXISTING ELECTRICITY POLE MOUNTED TRANSFORMER. REFER TO PHOTO #3.
6. THE MINIMUM CLEARANCE OF THE LATERAL LOCATION OF THE EDGE OF THE SIGN TO THE EXISTING ROAD CURB SHALL BE 8 FT.
7. THE CONTRACTOR SHALL TAKE INTO ACCOUNT THE LEVEL OF THE EXISTING NEAR UTILITIES IN THE AREA BEFORE THE WORK PROCEEDS.



LOCATION PLAN  
SCALE 1:20,000  
18°25'45.56\"/>



AERIAL PHOTO  
SCALE 1:1,000  
GOOGLE EARTH  
VERSION: 7.3.4.2542 PRO

**EN.Z.O.**  
Engineering, psc.  
PO Box 3040, PMB 427  
GUAYAMA, PR 00778  
TEL. (787) 649-6200 | LOPEZBAEZ@ENZODROUPLLC.ORG

HERNAN E. LOPEZ BAEZ, F.E.M.E.M.  
I.C. 18 SAFE

**BUS STOP SIGNAGE PROJECT - PHASE 1**  
**ROUTE 5 | BUS STOP #50**  
FROM SAN JUAN TO ITURREGUI AVENUE  
LUNA ST. INT. ASTRO ST.  
MUNICIPALITY OF CAROLINA

**METROPOLITANA DE AUTOBUSES**  
AUTORIDAD DE AUTOBUSES

METROPOLITANA DE AUTOBUSES BOX 105349 SAN JUAN, PR 00919-0349		REVISION	
DATE: JUNE 2022	CHECKED BY: BEV	DRAW BY: ABZ	
DWG. TYPE: TS-1.22		SHEET NO. 28	OF 88

# ROUTE 5 | BUS STOP #51



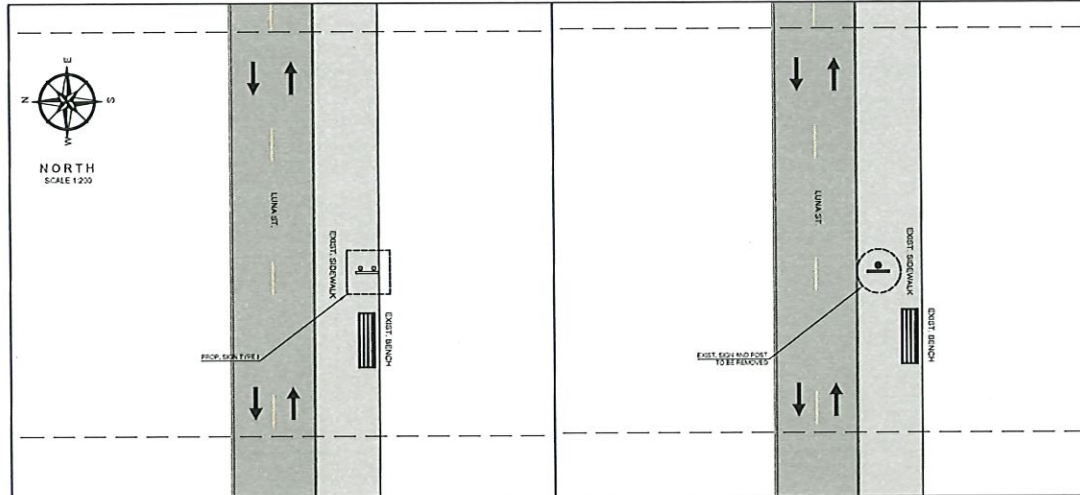
PHOTO - 1



PHOTO - 2

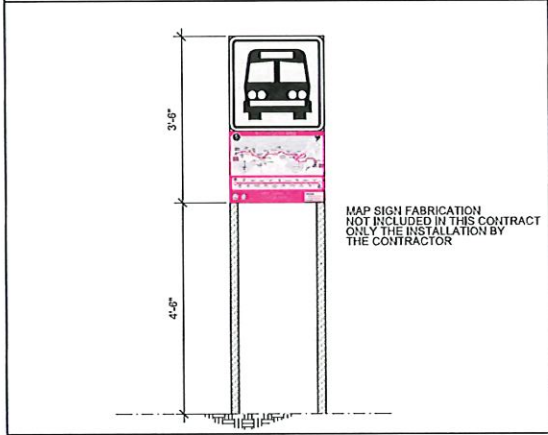


PHOTO - 3: PROPOSED SIGN LOCATION



PROPOSED IMPROVEMENTS - ROUTE 5 | B.S.#51

EXIST. CONDITIONS - ROUTE 5 | B.S.#51



PROPOSED SIGN TYPE I

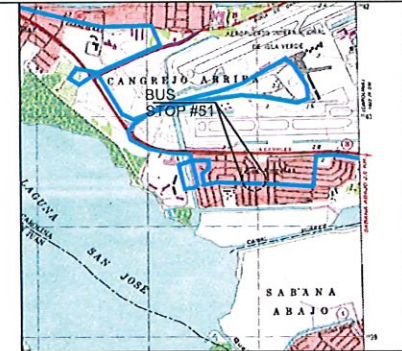
NOT TO SCALE

**LEGEND:**

- PROP. SIGN TYPE I
- PROP. SIGN TYPE II
- PROP. SIGN TYPE III
- PROP. SIGN TYPE IV
- PROP. SIGN TYPE V
- EXIST. SIGN
- PRMSA EXCLUSIVE LANE (AMA LANE)
- TRAFFIC DIRECTION

**NOTES:**

1. THE CONTRACTOR SHALL OBTAIN THE EXISTING SIGN DEMOLITION AND PERMITS PERMITTED FROM THE DEPARTMENT OF TRANSPORTATION AND PUBLIC WORKS PRIOR TO THE BEGINS OF EACH WORK SITE DURING THE PROJECT.
2. THE CONTRACTOR SHALL CONSULT THE PROJECT ENGINEER BEFORE THE INSTALLATION OF EACH STRUCTURE.
3. THE CONTRACTOR SHALL REMOVE THE EXISTING SIGN AND TRAFFIC POST. THESE STRUCTURES WILL BE SUBJECT TO THE PRMSA PERSONNEL.
4. THE CONTRACTOR SHALL REMOVE THE EXISTING POST FOUNDATION.
5. THE CONTRACTOR SHALL INSTALL THE PROPOSED SIGN IN THE BREAKAWAY NEXT TO SHOULDER WALL REFER TO PHOTO #3
6. THE MAXIMUM DISTANCE OF THE LATERAL LOCATION OF THE EDGE OF THE SIGN TO THE EXISTING ROAD CURB SHALL BE EQUAL.



LOCATION PLAN  
SCALE 1:20,000  
18°25'45.49"N, 66°02'29.17"W



AERIAL PHOTO  
SCALE 1:1,000  
GOOGLE EARTH  
VERSION: 7.3.8.842 PRO

Yo, Hernán E. López Baz, Registro Profesional No. 1011, me declaro responsable de haber elaborado el presente proyecto de obra de ingeniería civil, en el cual he participado como autor, diseñador, supervisor y/o responsable de la ejecución de la obra. Asimismo, declaro que he cumplido con los requisitos establecidos en el Reglamento de la Ley de Regulación de la Profesión de Ingeniero Civil, Ley No. 100, de 1996, y que he cumplido con los requisitos establecidos en el Reglamento de la Ley de Regulación de la Profesión de Ingeniero Civil, Ley No. 100, de 1996, y que he cumplido con los requisitos establecidos en el Reglamento de la Ley de Regulación de la Profesión de Ingeniero Civil, Ley No. 100, de 1996.

**EN.Z.O.**  
engineering, psc.  
PO Box 3040, PMB 427  
Guayama, PR 00778  
TEL. (787) 649-6200 | LOPEZBAEZ@ENZORPULLD.ORG

HERNÁN E. LOPEZBAZ, FE MEM  
LIC. 1934PE

**BUS STOP SIGNAGE PROJECT - PHASE 1**  
**ROUTE 5 | BUS STOP #51**  
FROM SAN JUAN TO ITURREGUI AVENUE  
LUNA ST. BEFORE TAURO ST.  
MUNICIPALITY OF CAROLINA

**AUTORIDAD METROPOLITANA DE AUTOBUSES**

METROPOLITAN BUS AUTHORITY  
BOX 155349  
SAN JUAN, PR 00919-5349

REVISION	
DATE: JUNE 2022	CHECKED BY: DRAW BY:
BEV	ABZ
DWG. TYPE: TS-123	SHEET NO. 29
	OF 88





































# ROUTE 5 | BUS STOP # 1

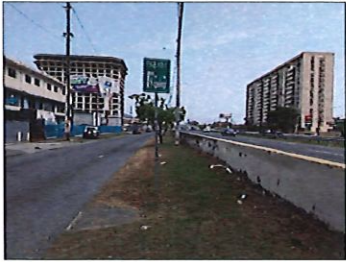


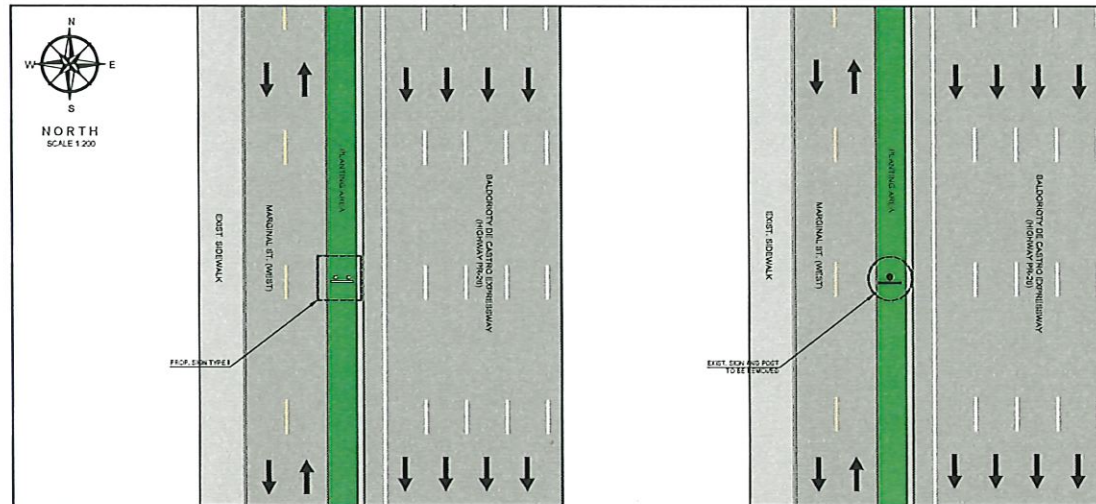
PHOTO - 1



PHOTO - 2

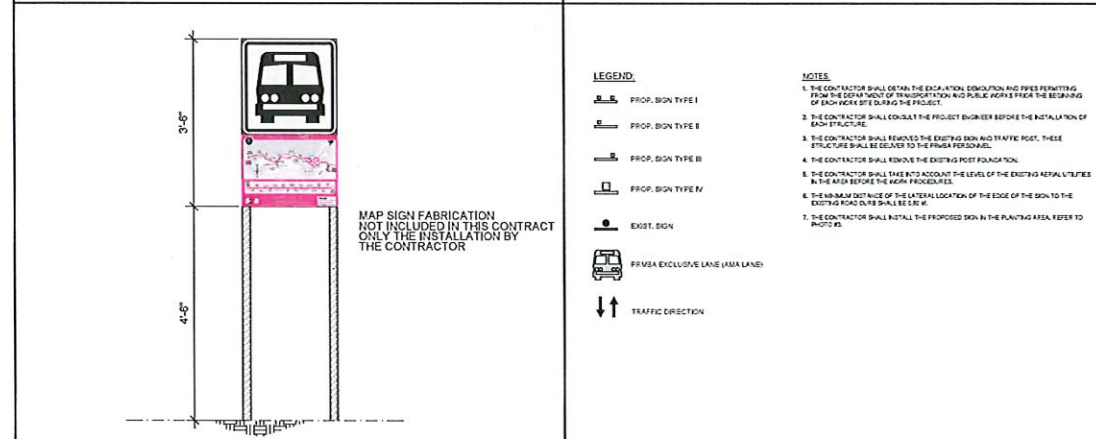
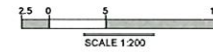


PHOTO - 3: PROPOSED SIGN LOCATION



PROPOSED IMPROVEMENTS - ROUTE 5 | B.S.#1

EXIST. CONDITIONS - ROUTE 5 | B.S.#1



PROPOSED SIGN TYPE I

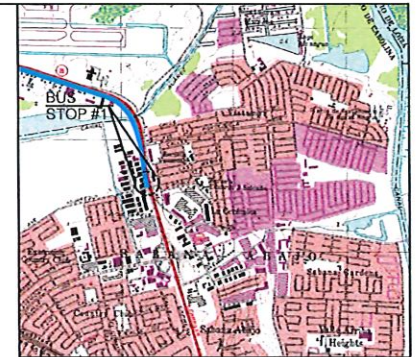
NOT TO SCALE

**LEGEND:**

- PROP. SIGN TYPE I
- PROP. SIGN TYPE II
- PROP. SIGN TYPE III
- PROP. SIGN TYPE IV
- EXIST. SIGN
- PRMBA EXCLUSIVE LANE (AMA LANE)
- TRAFFIC DIRECTION

**NOTES:**

1. THE CONTRACTOR SHALL OBTAIN THE EDUCATION, DEMOLITION AND TREE PERMITTING FROM THE DEPARTMENT OF TRANSPORTATION AND PUBLIC WORKS PRIOR TO THE BEGINNING OF EACH WORK SITE DURING THE PROJECT.
2. THE CONTRACTOR SHALL CONSULT THE PROJECT ENGINEER BEFORE THE INSTALLATION OF EACH STRUCTURE.
3. THE CONTRACTOR SHALL REMOVE THE EXISTING SIGN AND TRAFFIC POST. THESE STRUCTURES SHALL BE SECURED TO THE FINDER PERSONAL.
4. THE CONTRACTOR SHALL REMOVE THE EXISTING POST FOUNDATION.
5. THE CONTRACTOR SHALL TAKE INTO ACCOUNT THE LEVEL OF THE EXISTING AERIAL UTILITIES IN THE AREA BEFORE THE WORK PROCEEDS.
6. THE MINIMUM DISTANCE OF THE LATERAL LOCATION OF THE EDGE OF THE SIGN TO THE EXISTING ROAD CURB SHALL BE 2.0 M.
7. THE CONTRACTOR SHALL INSTALL THE PROPOSED SIGN IN THE PLANTING AREA, REFER TO PROJECT.



LOCATION PLAN  
SCALE 1:20,000

18°25'22.00"N, 65°59'19.82"W



AERIAL PHOTO  
SCALE 1:1,000

GOOGLE EARTH  
VERSION 7.3.4.6642 PRO

Yo, Hermano E. Lopez Baez, Agente, licencia 1814, certifica que soy el profesional que autorizo, diseño y preparo estos planos de los especificaciones para este proyecto. Asimismo, certifica que estos planos se conformaron de acuerdo con los procedimientos establecidos en el Reglamento de Ejecución de los Proyectos de Ingeniería y Construcción de la Agencia de Regulación y Fomento Económico de Puerto Rico. Asimismo, certifica que estos planos se conformaron de acuerdo con los procedimientos establecidos en el Reglamento de Ejecución de los Proyectos de Ingeniería y Construcción de la Agencia de Regulación y Fomento Económico de Puerto Rico. Asimismo, certifica que estos planos se conformaron de acuerdo con los procedimientos establecidos en el Reglamento de Ejecución de los Proyectos de Ingeniería y Construcción de la Agencia de Regulación y Fomento Económico de Puerto Rico.

**ENZO**  
engineering, psc.  
PO BOX 3040, PMB 427  
DURASO, PR 00778  
TEL. (787) 649-6200 | LOPEZBAEZ@ENZOGROUPLLC.COM

HERNÁN E. LOPEZ BAEZ, P.E. MEM.  
LIC. 1814

**BUS STOP SIGNAGE PROJECT - PHASE 1**  
**ROUTE 5 | BUS STOP # 1**  
FROM ITURREGUI AVENUE TO SAN JUAN  
BALDORIOY DE CASTRO AVE. (HIGHWAY PR-26) - MARGINAL ST.  
MUNICIPALITY OF CAROLINA

**METROPOLITANA** AUTORIDAD  
**DE** AUTOBUSES

METROPOLITAN BUS AUTHORITY BOX 126349 SAN JUAN, PR 00919-5349		REVISION	
DATE: JUNE 2022	CHECKED BY: BEV	DRAWN BY: ABZ	
DWG. TYPE: TS-2.01		SHEET NO.: 39	OF 68







































# ROUTE 5 | BUS STOP #12



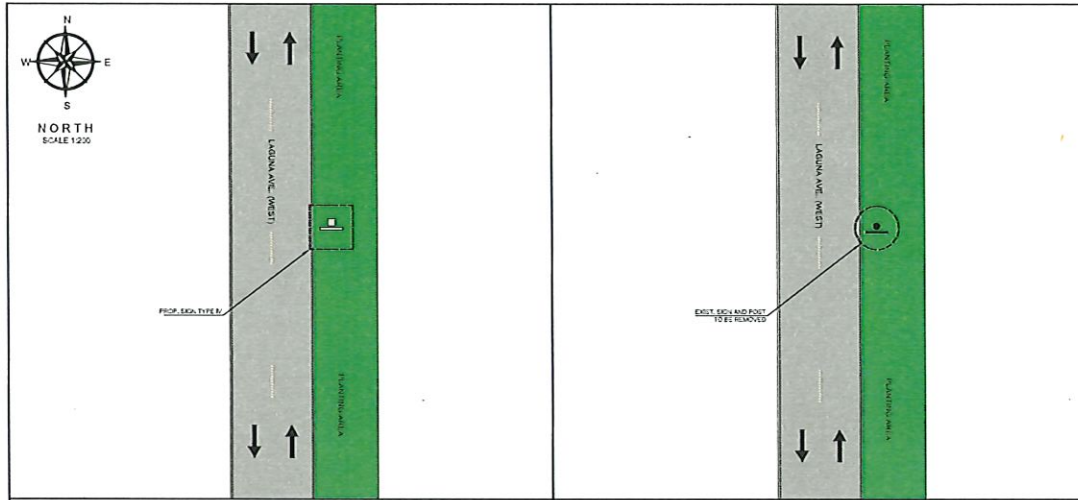
PHOTO - 1



PHOTO - 2

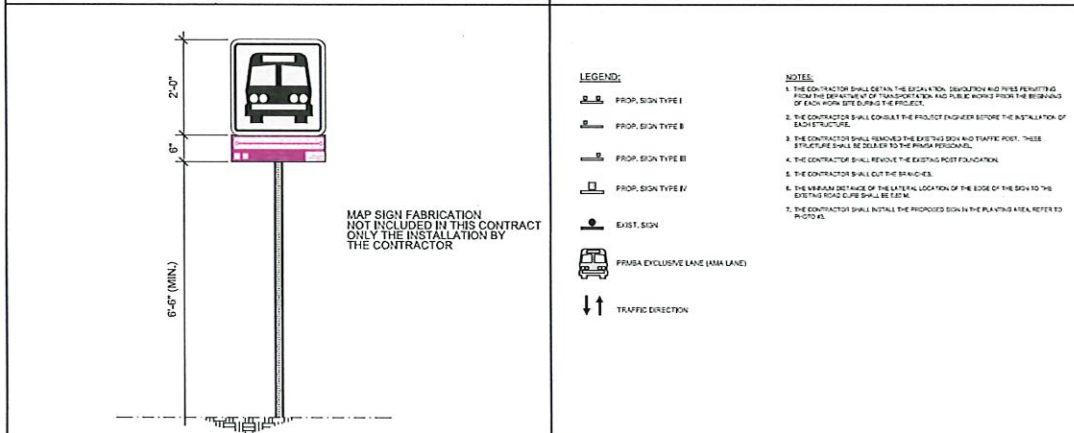
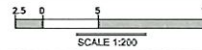


PHOTO - 3: PROPOSED SIGN LOCATION



PROPOSED IMPROVEMENTS - ROUTE 5 | B.S.#12

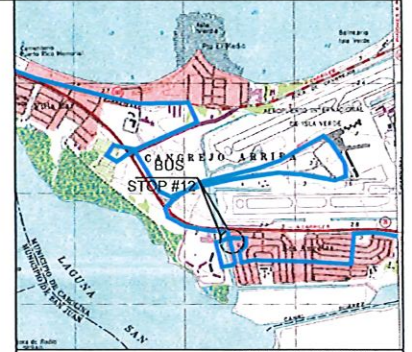
EXIST. CONDITIONS - ROUTE 5 | B.S.#12



PROPOSED SIGN TYPE IV

NOT TO SCALE

- LEGEND:**
- PROP. SIGN TYPE I
  - PROP. SIGN TYPE B
  - PROP. SIGN TYPE BII
  - PROP. SIGN TYPE IV
  - EXIST. SIGN
  - PRMA EXCLUSIVE LANE (BIKE LANE)
  - TRAFFIC DIRECTION
- NOTES:**
1. THE CONTRACTOR SHALL OBTAIN THE NECESSARY PERMITS FROM THE DEPARTMENT OF TRANSPORTATION AND PUBLIC WORKS FROM THE BEGINNING OF EACH WORK SITE DURING THE PROJECT.
  2. THE CONTRACTOR SHALL CONSULT THE PROJECT ENGINEER BEFORE THE INSTALLATION OF EACH STRUCTURE.
  3. THE CONTRACTOR SHALL REMOVE THE EXISTING SIGN AND TRAFFIC POST. THESE STRUCTURES SHALL BE CLEANED TO THE FINISH PERSONALLY.
  4. THE CONTRACTOR SHALL REMOVE THE EXISTING POST FOUNDATION.
  5. THE CONTRACTOR SHALL CUT THE BRANCHES.
  6. THE VERBAM DETAIL OF THE LATERAL LOCATION OF THE EDGE OF THE SIGN TO THE EXISTING ROAD CURB SHALL BE 0.2 M.
  7. THE CONTRACTOR SHALL INSTALL THE PROPOSED SIGN IN THE PLANTING AREA REFER TO PHOTO #3.



LOCATION PLAN SCALE 1:20,000



AERIAL PHOTO SCALE 1:1,000

GOOGLE EARTH VERSION: 7.3.4.8642 PRO

No. Permit: E. Lopez Diaz, Avenida W-9, San Juan, PR. No. de Proyecto: 2021-01-001. Este proyecto de obra de infraestructura de transporte público es un servicio de ingeniería profesional que se presta en el marco de la Ley de Ejercicio de la Profesión de Ingeniero Civil y de la Ley de Ejercicio de la Profesión de Ingeniero de Obras Civiles. Este proyecto de obra de infraestructura de transporte público es un servicio de ingeniería profesional que se presta en el marco de la Ley de Ejercicio de la Profesión de Ingeniero Civil y de la Ley de Ejercicio de la Profesión de Ingeniero de Obras Civiles.

**EN.Z.O.**  
engineering, psc.  
PO BOX 3040, PMB 427  
CAROLINA, PR 00981  
TEL: (787) 649-6200 | LOPEZDAEZ@ENZOROLLPC.COM

HERNÁN E. LOPEZ DIAZ  
INGENIERO CIVIL  
INGENIERO DE OBRAS CIVILES  
PUERTO RICO

**BUS STOP SIGNAGE PROJECT - PHASE 1**  
**ROUTE 5 | BUS STOP #12**  
FROM ITURREGUI AVENUE TO SAN JUAN LAGUNA AVENUE BEFORE ACUARIO ST.  
MUNICIPALITY OF CAROLINA

AUTODIADA  
**METROPOLITANA DE AUTOBUSES**

METROPOLITAN BUS AUTHORITY BOX 155349 SAN JUAN, PR 00918-5349	
DATE: JUNE 2022	CHECKED BY: ABZ
DWG. TYPE: TS-2.12	SHEET NO. 50 OF 88

















































































# ROUTE 5 | BUS STOP #52



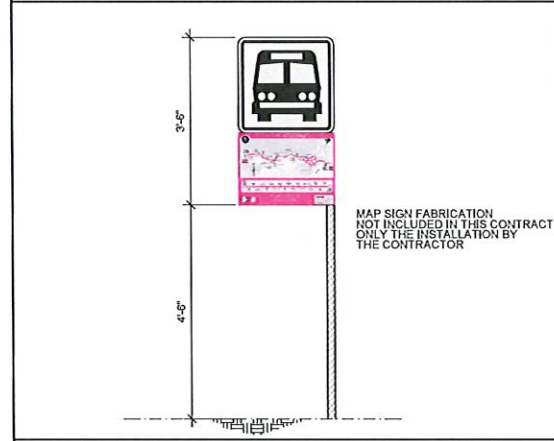
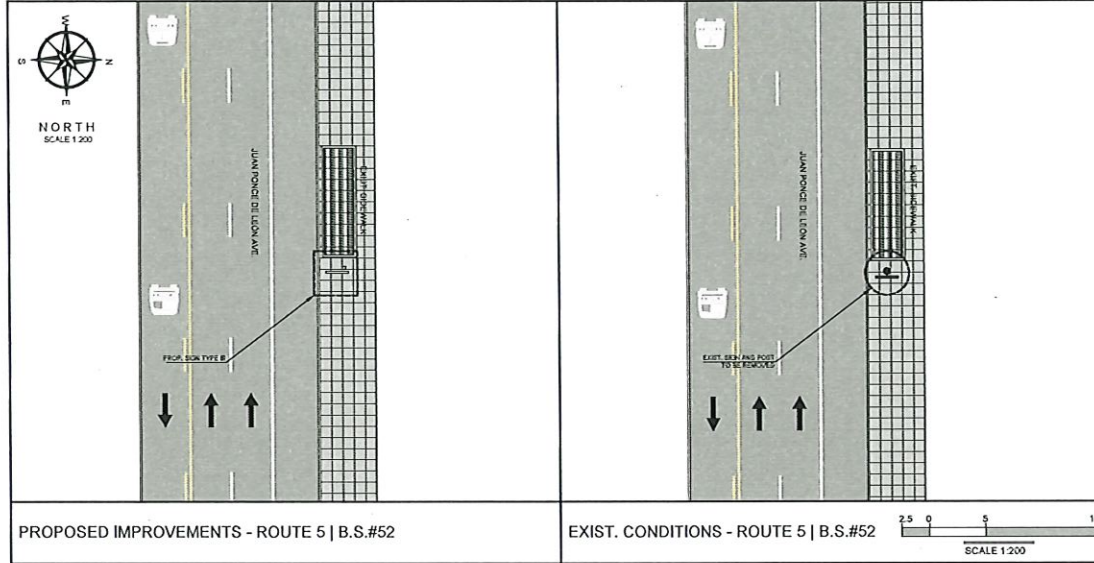
PHOTO - 1



PHOTO - 2



PHOTO - 3. PROPOSED SIGN LOCATION



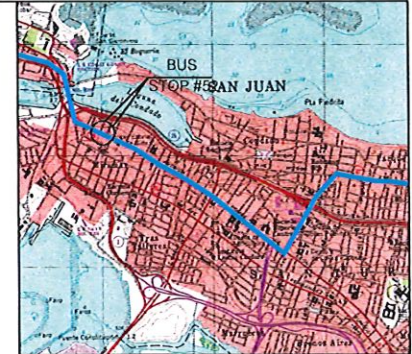
PROPOSED SIGN TYPE III NOT TO SCALE

**LEGEND:**

- PROP. SIGN TYPE I
- PROP. SIGN TYPE II
- PROP. SIGN TYPE III
- PROP. SIGN TYPE IV
- EXIST. SIGN
- PRMSA EXCLUSIVE LANE (HMA LANE)
- TRAFFIC DIRECTION

**NOTES:**

1. THE CONTRACTOR SHALL OBTAIN THE EDUCATION, EVOLUTION AND PERMITTING FROM THE DEPT. OF TRANSPORTATION AND PUBLIC WORKS PRIOR TO THE BEGINNING OF EACH PROJECT DURING THE PROJECT.
2. THE CONTRACTOR SHALL CONSULT THE PROJECT ENGINEER BEFORE THE INSTALLATION OF EACH STRUCTURE.
3. THE CONTRACTOR SHALL REMOVE THE EXISTING SIGN AND TRAFFIC POST. THESE STRUCTURE SHALL BE DELIVER TO THE PRMSA PERSONNEL.
4. THE CONTRACTOR SHALL REMOVE THE EXISTING POST FOUNDATION.
5. THE CONTRACTOR SHALL INSTALL THE PROPOSED SIGN IN PLACE. THE CONTRACTOR SHALL COORDINATE THE INSTALLATION WITH THE MUNICIPALITY OF SAN JUAN ABOUT THE SAME TO BE INSTALLED BY THESE TELE. REFER TO PHOTO.
6. THE MINIMUM DISTANCE OF THE LATERAL LOCATION OF THE EDGE OF THE SIGN TO THE EXISTING ROAD CURB SHALL BE 2.0 M.



LOCATION PLAN SCALE 1:20,000 18°27'21.66"N, 66°50'46"W



AERIAL PHOTO SCALE 1:1,000 GOOGLE EARTH VERSION 7.3.4.6642 PRO

**ENZO**  
engineering, psc.  
PO Box 3040, PMB 427  
GURABO, PR 00778  
TEL. (787) 649-6200 | LOPEZBAEZ@ENZODRUPCLLC.ORG

**BUS STOP SIGNAGE PROJECT - PHASE 1**  
**ROUTE 5 | BUS STOP #52**  
FROM ITURREGUI AVENUE TO SAN JUAN  
JUAN PONCE DE LEÓN AVENUE BEFORE ENSENADA ST.  
MUNICIPALITY OF SAN JUAN

**METROPOLITANA DE AUTOBUSES**  
AUTORIDAD METROPOLITANA DE AUTOBUSES

METROPOLITAN BUS AUTHORITY BOX 120349 SAN JUAN, PR 00910-5349	
DATE: JUN 2022	REVISION
CHECKED BY: BEV	DRAWN BY: ABZ
DWG. TYPE: TS-2.33	SHEET NO. 71 OF 88

Yo, Heriberto E. Lopez Baez, Ingeniero, Licencia 18-546, certifico que soy el profesional que confeccioné, diseñé y a cargo esta planilla y he verificado los datos suministrados. Asimismo, certifico que esta planilla y sus modificaciones son de mi autoría y que no he sido contratado por terceros para confeccionar esta planilla. Esta planilla es propiedad intelectual de ENZO engineering, psc. y no debe ser utilizada sin el consentimiento escrito de ENZO engineering, psc. y no debe ser utilizada para fines que no sean los que se indican en esta planilla. Asimismo, certifico que esta planilla es propiedad intelectual de ENZO engineering, psc. y no debe ser utilizada sin el consentimiento escrito de ENZO engineering, psc. y no debe ser utilizada para fines que no sean los que se indican en esta planilla.



















































