

5

4

3

2

1

SAFETY ON THIS JOB
DEPENDS ON YOU.

REVISIONS					
NO.	SYM	ZONE	DESCRIPTION	DATE	APPROVED
1	-2		GENERAL REVISION	1/31/90	R. GARAY

AIDS TO NAVIGATION	DATE	PLANE	COORDINATES	LAT.	LONG.	STA.	RGE.
ANCHOR BUOY #13	8-27-90	780892.00	145255.00	018-13-53.97612	065-37-27.93741	121+75	-1999
GRN BY #13	8-27-90	780103.00	144792.00	018-13-49.41161	065-37-34.05913	122+65	-1255
YLV BUOY C	8-27-90	779192.00	144857.00	018-13-51.08220	065-37-43.51267	130+26	-728
YLV BUOY D	8-27-90	777484.00	143344.00	018-13-35.18973	065-38-01.30522	130+66	-1520
GRN BY #11	8-27-90	778352.00	141879.00	018-13-20.01074	065-37-52.36704	114+46	-12044
GRN BY #9	8-27-90	778362.00	140398.00	018-13-05.88082	065-37-41.95694	96+85	-2378

BUOY #13	DATE	PLANE	COORDINATES	LAT.	LONG.	STA.	RGE.
BUOY #13	8-27-90	780892.00	145255.00	018-13-53.97612	065-37-27.93741	121+75	-1999

ANCHOR BUOY	DATE	PLANE	COORDINATES	LAT.	LONG.	STA.	RGE.
ANCHOR BUOY	8-27-90	780103.00	144792.00	018-13-49.41161	065-37-34.05913	122+65	-1255

VESEL ON LINE	DATE	PLANE	COORDINATES	LAT.	LONG.	STA.	RGE.
VESEL ON LINE	8-27-90	779192.00	144857.00	018-13-51.08220	065-37-43.51267	130+26	-728

PIER 1	DATE	PLANE	COORDINATES	LAT.	LONG.	STA.	RGE.
PIER 1	8-27-90	777484.00	143344.00	018-13-35.18973	065-38-01.30522	130+66	-1520

PIER 2	DATE	PLANE	COORDINATES	LAT.	LONG.	STA.	RGE.
PIER 2	8-27-90	778352.00	141879.00	018-13-20.01074	065-37-52.36704	114+46	-12044

PIER 3	DATE	PLANE	COORDINATES	LAT.	LONG.	STA.	RGE.
PIER 3	8-27-90	778362.00	140398.00	018-13-05.88082	065-37-41.95694	96+85	-2378

* SEE SHEET NO.6
FOR FURTHER DETAIL.

NAVSTA PUBLIC WORKS DEPARTMENT
 REVIEWED BY: INITIALS DATE
 PROJ. MGR. A. FIGUEROA, C.S.T. 12/3/91
 P.M. DIV. DIR. J. QUINONES, P.E. 12/3/91
 E.E. DIV. DIR. J. NEVON, P.E. 12/3/91
 ENGR. BR. MGR. R. GARAY, P.E. 12/3/91
 DIVISION DIRECTOR: 12/3/91
 APPROVED: 12/3/91
 USER: R. GARAY 1-22-91

SEE DRAWING NO. 1 FOR NOTES.

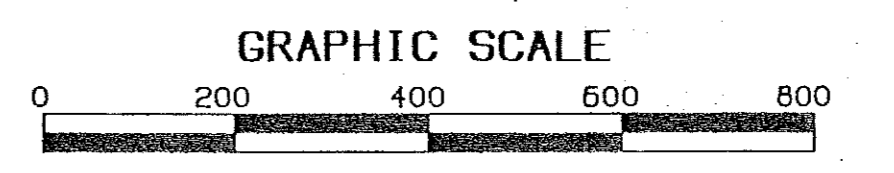
REFER TO SURVEY NO. 90-246.

VERNON F. MEYER & ASSOC., INC.
 SURVEYING AND PHOTOGRAMMETRIC MAPPING
 NEW ORLEANS, LA.

DEPARTMENT OF THE ARMY
 JACKSONVILLE DISTRICT, CORPS OF ENGINEERS
 JACKSONVILLE, FLORIDA

U.S. NAVAL STATION
 ROOSEVELT ROADS, PUERTO RICO
 SOUNDING SURVEY

DESIGN ENG.	PLAN	DATE	SCALE
DRAWN BY:	CHKD BY:	TRV. NO.	R.W. DRAWING NO.
		F	5953
SCALE: AS SHOWN	DATED: AUG 1990	SHEET 3 OF 6	



MATCH LINE STA. 85+00 SHEET NO. 2

5

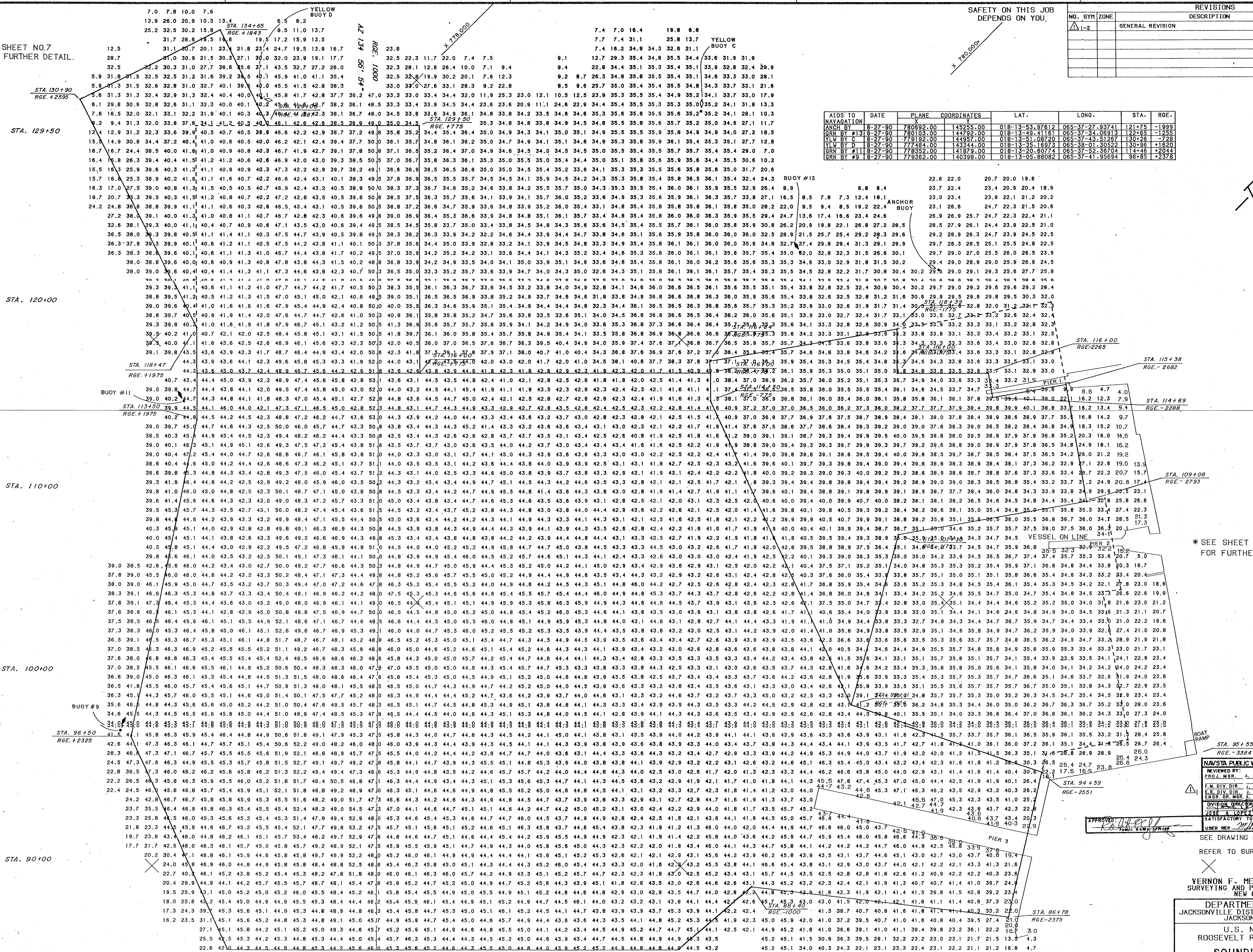
4

3

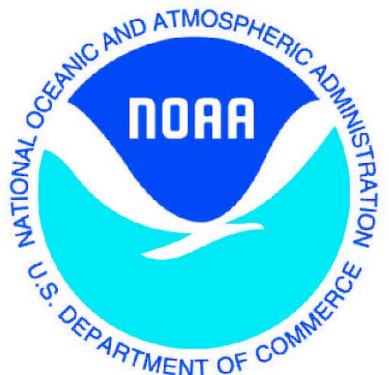
2

D.O. FILE NO. 101-35,767-1

* SEE SHEET NO.7
FOR FURTHER DETAIL.



9M

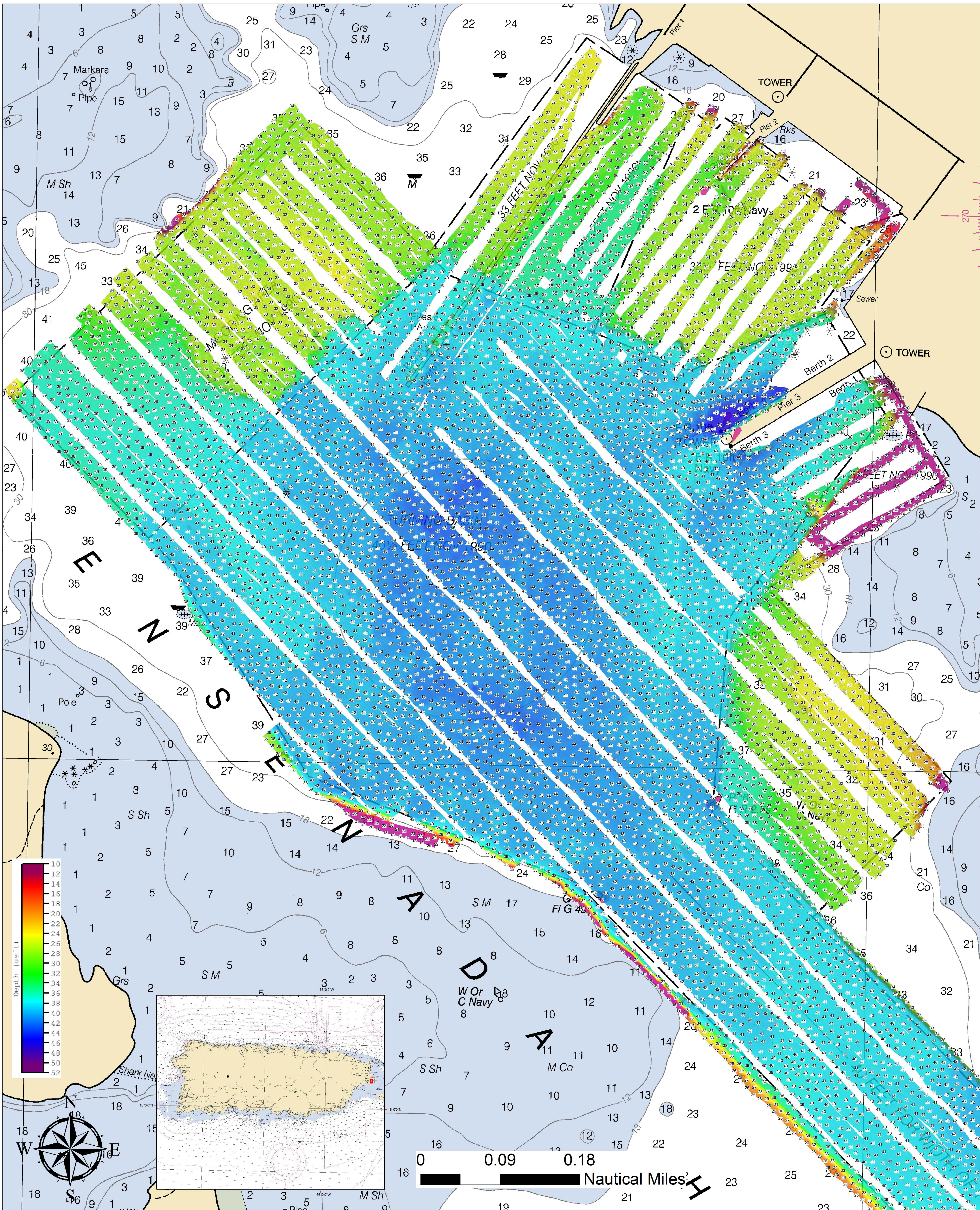


Survey Chartlet of Roosevelt Roads and Bahia de Puerca, Puerto Rico - F00703 Hurricane Maria Response Hydrographic Survey

NATIONAL OCEANIC AND ATMOSPHERIC ADMINISTRATION NATIONAL OCEAN SERVICE

Data reflect the state of the sea floor in existence on the day and at the time the survey was conducted. The survey and the chart have not been updated for inclusion of the latest Local Notice to Mariners. Preliminary data subject to office review.

NOT FOR USE IN NAVIGATION.



Project: S-1950-TJ-17
Survey: F00703 Hurricane Maria
Locality: Puerto Rico
Sublocality: Roosevelt Roads
Survey Scale: 1:10,000

Sounding Units: NOAA Rounded Feet
Sounding Datum: MLLW
Horizontal Datum: WGS84
Chart Number: NOAA Chart 25666
Survey Technique: Multibeam & Side Scan Sonar

NOAA Ship Thomas Jefferson S222
CDR Chris van Westendorp, NOAA
 co.thomas.jefferson@noaa.gov

Chartlet 2 of 3
 Date of Survey
 30 Sept 2017