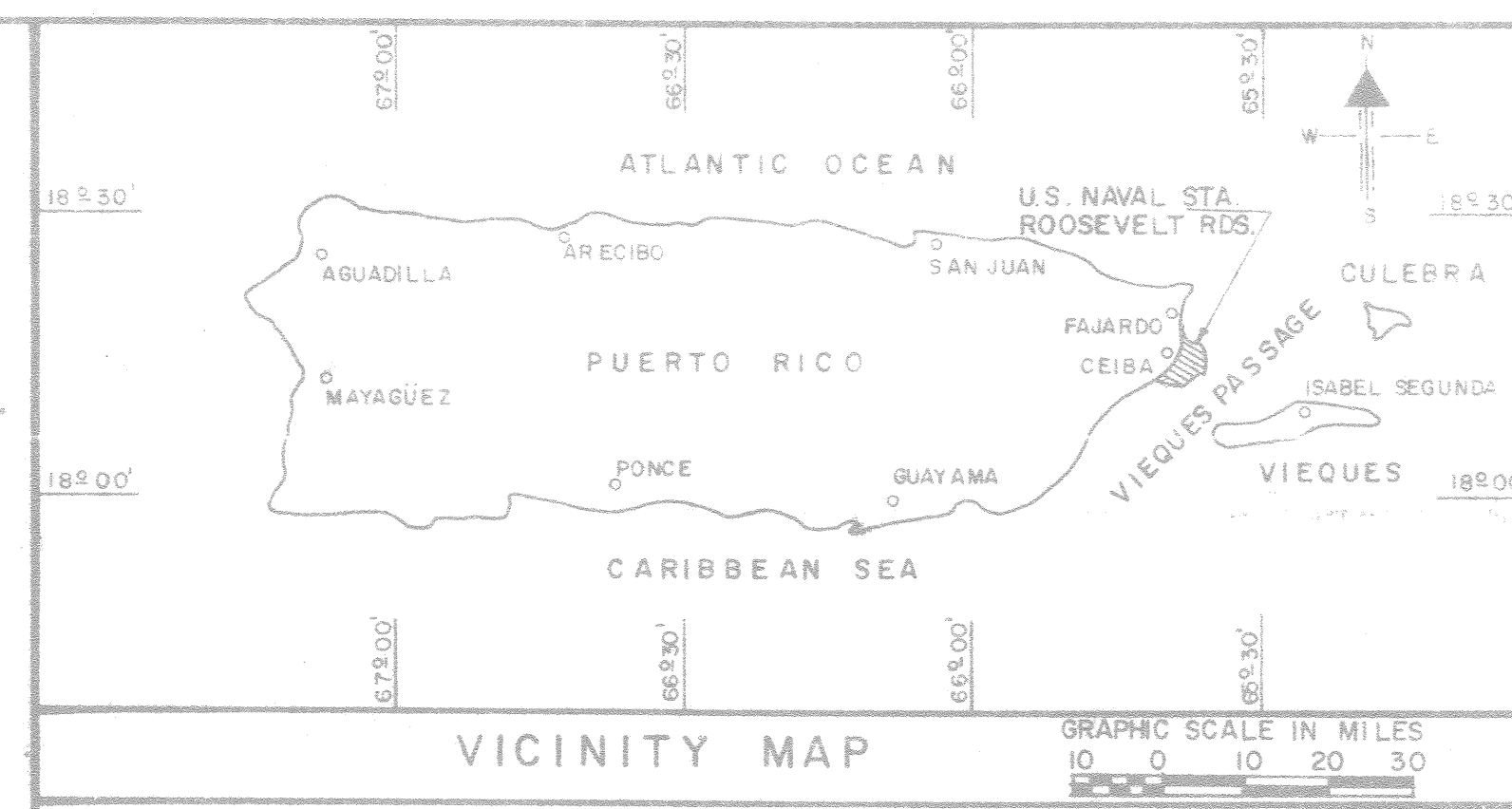




LOCATION PLAN



VICINITY MAP

REVISIONS		
SYM	DESCRIPTION	DATE APPROVED
GEN	REVISION	

INDEX OF DRAWINGS

NAVFAC DWG. NO.	EFD DWG. NO.	SHEET NO.	TITLE
4109297	209297	1 T-1	TITLE SHEET AND LOCATION PLAN
4109298	209298	2 D-1	DEMOLITION PLAN
4109299	209299	3 D-2	DEMOLITION PLAN
4109300	209300	4 D-3	EXISTING MARINA PIER
4109301	209301	5 B-1	SHED INVESTIGATION
4109302	209302	6 B-2	SUB SOIL INVESTIGATION
4109303	209303	7 C-1	NEW MARINA LAYOUT PLAN
4109304	209304	8 C-2	NEW MARINA LAYOUT PLAN
4109305	209305	9 C-3	NEW MARINA LAYOUT PLAN
4109306	209306	10 C-4	NEW MARINA LAYOUT PLAN
4109307	209307	11	NEW MARINA LAYOUT PLAN
4109308	209308	12	NEW MARINA LAYOUT PLAN

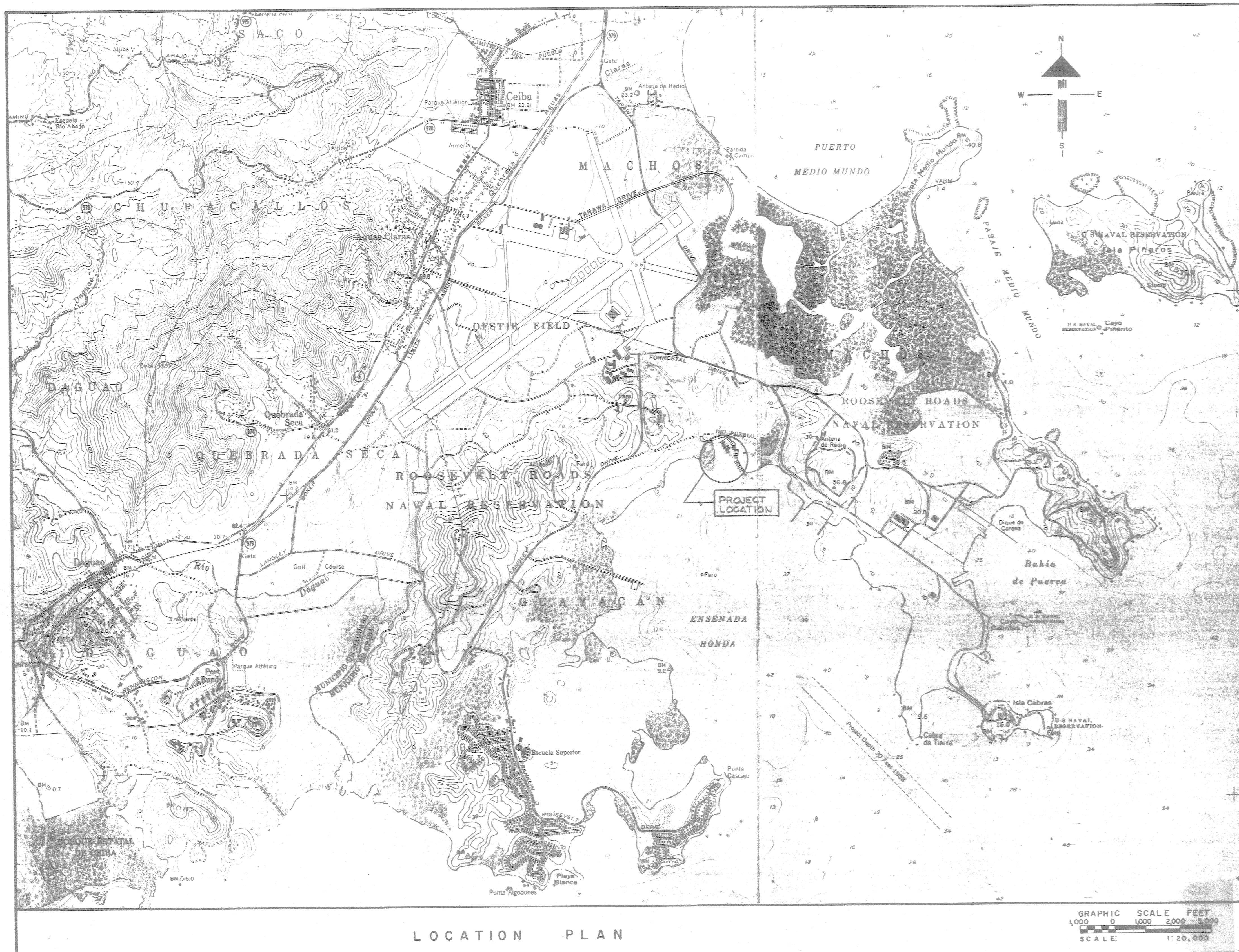
U. S. NAVAL STATION ROOSEVELT ROADS, PUERTO RICO  
 REPAIR OF MARINA PIERS

DEPARTMENT OF THE NAVY ATLANTIC DIVISION

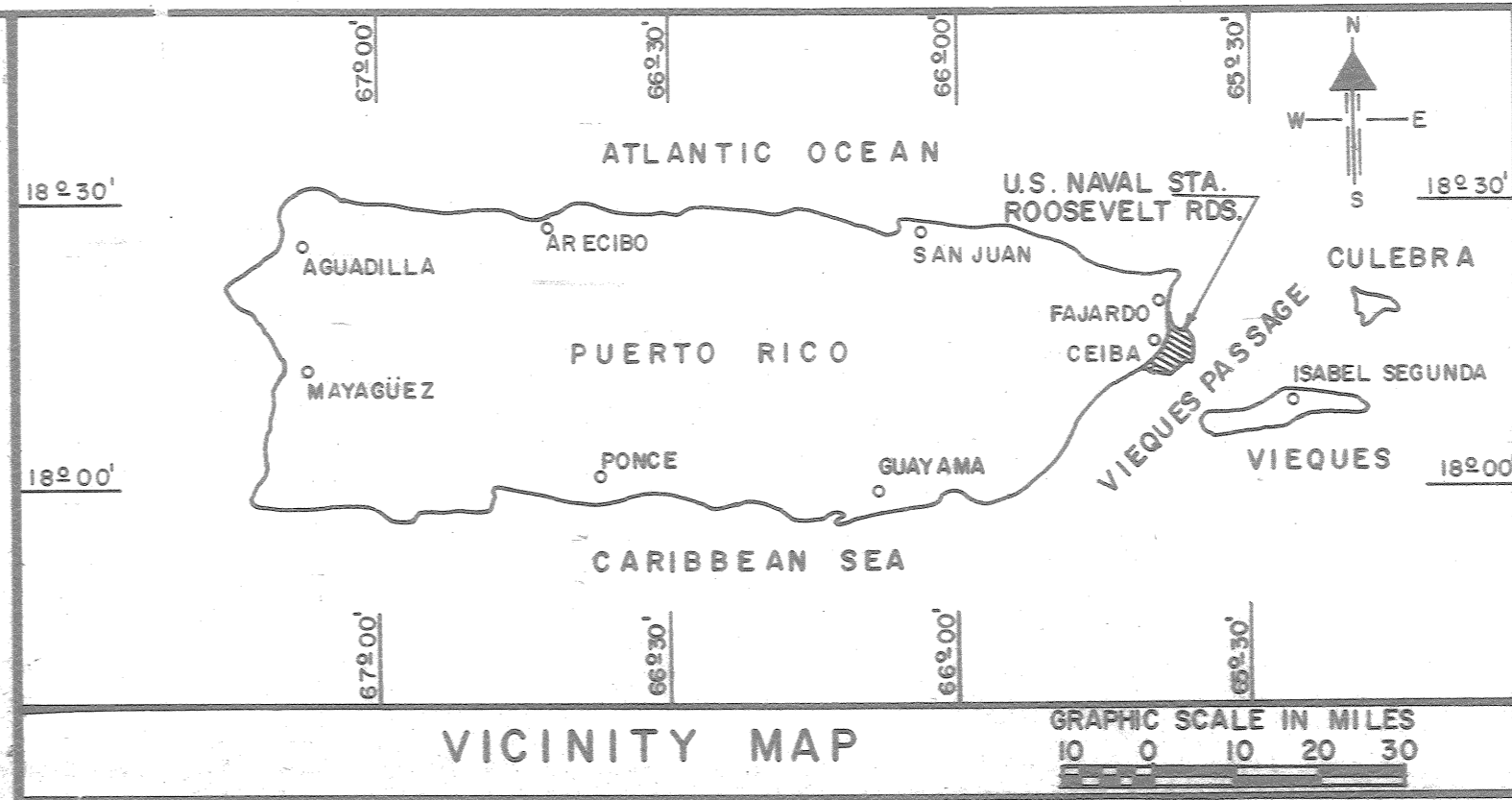
T-1	
GUILLERMET, ORTIZ AND ASSOCIATES ENGINEERS & ARCHITECTS P.O. BOX 4789 SAN JUAN, P.R.	
ATLANTIC DIVISION	
PROJ. MGR. _____ SUBMITTED BY _____ DATE 6/29/84	DESIGNED BY _____ DRAWN BY _____
FIRM MEMBER _____ TITLE _____	OFFICER IN CHARGE _____ DATE _____
APPROVED _____ DATE _____	FOR SPEC. FOR COMMANDER NAVFAC _____

RR3-807





LOCATION PLAN



VICINITY MAP

REVISIONS			
SYM.	DESCRIPTION	DATE	APPROVED
	GEN. REVISION	5/15/84	BRJ

INDEX OF DRAWINGS

NAVFAC DWG. NO.	EFD DWG. NO.	SHEET NO.	TITLE
4109297	209297	1 T-1	TITLE SHEET AND LOCATION PLAN
4109298	209298	2 D-1	DEMOLITION PLAN
4109299	209299	3 D-2	DEMOLITION PLAN (CONT.)
4109300	209300	4 D-3	EXISTING MARINA DETAILS
4109301	209301	5 B-1	SUB-SOIL INVESTIGATION
4109302	209302	6 B-2	SUB-SOIL INVESTIGATION
4109303	209303	7 CS-1	NEW MARINA LAYOUT PLAN
4109304	209304	8 CS-2	NEW MARINA LAYOUT PLAN (CONT.)
4109305	209305	9 S-1	NEW PIERS ① THRU ⑫ AND ⑰ THRU ⑳
4109306	209306	10 S-2	NEW MAIN PIERS "A" AND "E"
4109307	209307	11 S-3	NEW PIERS ⑬ AND ⑭ AND MISC. SECTIONS AND DETAILS
4109308	209308	12 E-1	PLAN AND DETAILS

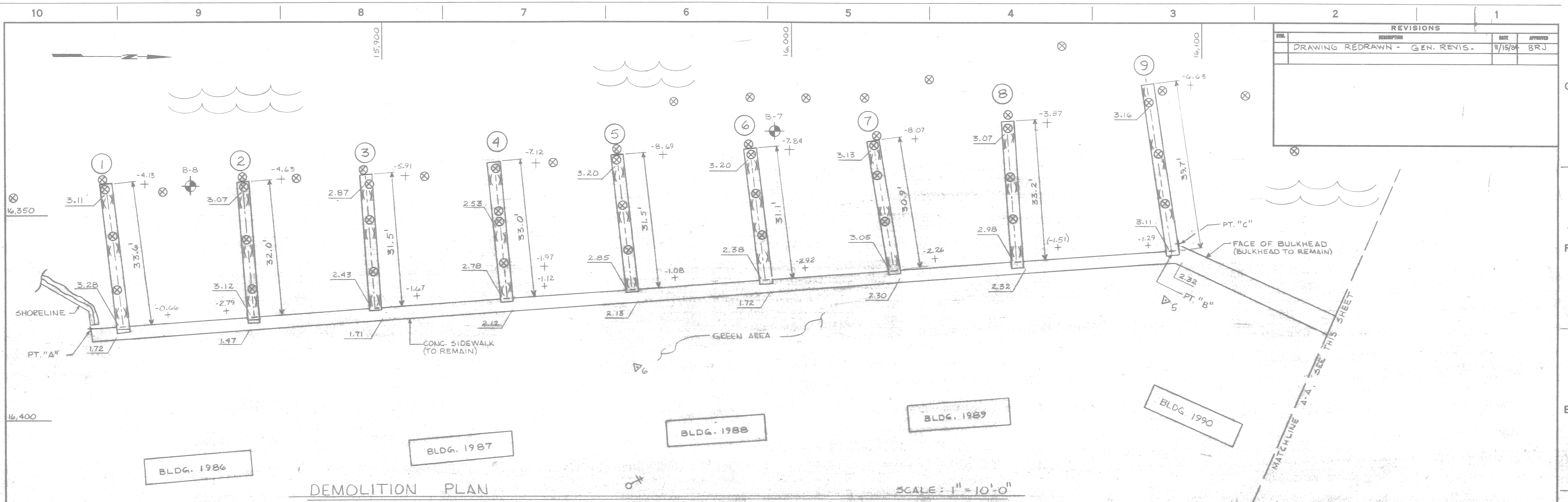
U. S. NAVAL STATION ROOSEVELT ROADS, PUERTO RICO  
 REPAIR OF MARINA PIERS  
 DEPARTMENT OF THE NAVY ATLANTIC DIVISION

RECORD DRAWING LETTER DATED 3 JUN 1987		T-1	
GUILLERMET, ORTIZ AND ASSOCIATES ENGINEERS & ARCHITECTS P.O. BOX 4789 SAN JUAN, P.R.		DEPARTMENT OF THE NAVY NAVAL FACILITIES ENGINEERING COMMAND ATLANTIC DIVISION NORFOLK, VIRGINIA	
DES. L.R.C. DR. C.L.C. CHK. P.J.O.		U. S. NAVAL STATION, ROOSEVELT ROADS, P. R.	
PROJ. MGR. CH. ENGR.		REPAIR OF MARINA PIERS	
SUBMITTED BY: DATE: 6/29/84			
FIRM MEMBER PRINCIPAL		TITLE SHEET AND LOCATION PLAN	
EFD: PP RVD: BRY		NAVY DRAWING NO. 4109297	
HD DIR		CONSTR. CONTR. NO. N62470-81-B-1736	
APPROVED: DATE:		SCALE: AS SHOWN SPEC 05-81-1736 SHEET 1 OF 12	
OFFICER IN CHARGE		FOR EFD FOR COMMANDER NAVFAC	

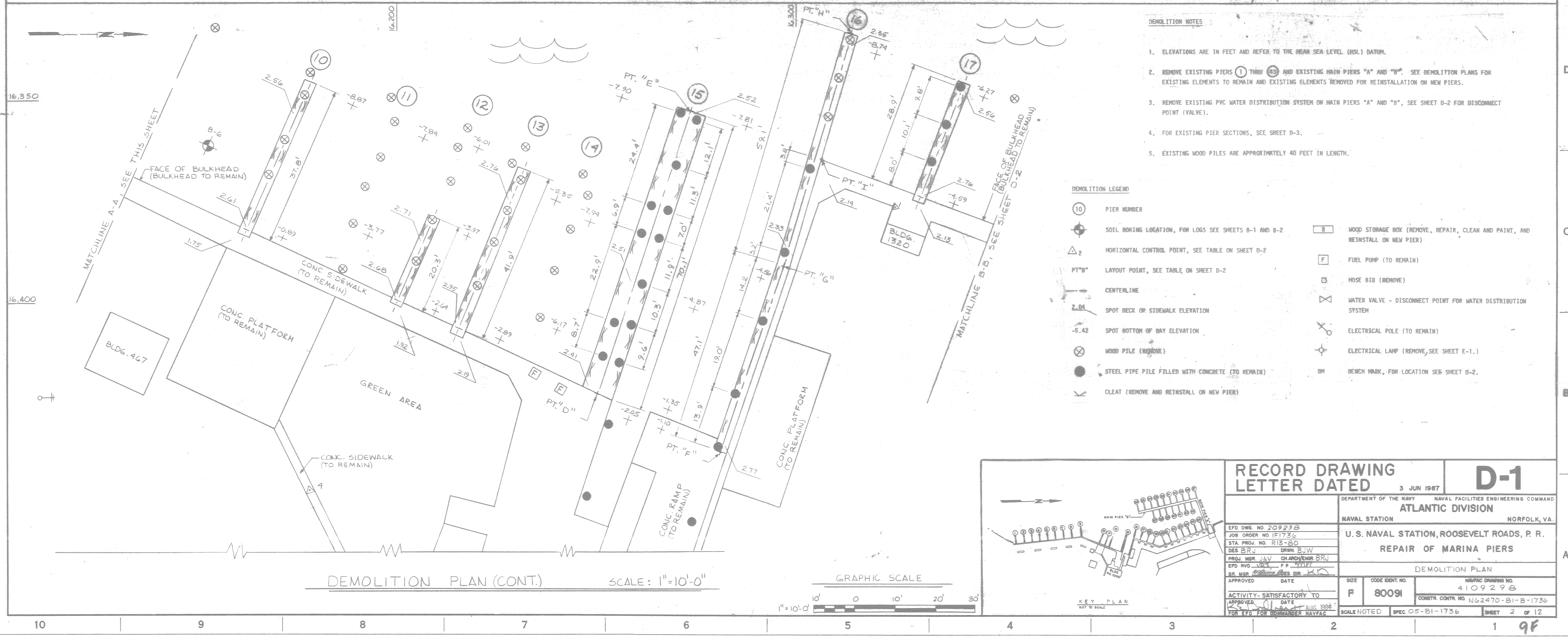








REVISIONS			
NO.	DESCRIPTION	DATE	APPROVED
1	DRAWING REDRAWN - GEN. REVIS.	8/15/84	BRJ



- DEMOLITION NOTES**
- ELEVATIONS ARE IN FEET AND REFER TO THE MEAN SEA LEVEL (MSL) DATUM.
  - REMOVE EXISTING PIERS 1 THRU 9 AND EXISTING MAIN PIERS "A" AND "B". SEE DEMOLITION PLANS FOR EXISTING ELEMENTS TO REMAIN AND EXISTING ELEMENTS REMOVED FOR REINSTALLATION ON NEW PIERS.
  - REMOVE EXISTING PVC WATER DISTRIBUTION SYSTEM ON MAIN PIERS "A" AND "B", SEE SHEET D-2 FOR DISCONNECT POINT (VALVE).
  - FOR EXISTING PIER SECTIONS, SEE SHEET D-3.
  - EXISTING WOOD PILES ARE APPROXIMATELY 40 FEET IN LENGTH.

- DEMOLITION LEGEND**
- (10) PIER NUMBER
  - ⊕ SOIL BORING LOCATION, FOR LOGS SEE SHEETS B-1 AND B-2
  - △<sub>2</sub> HORIZONTAL CONTROL POINT, SEE TABLE ON SHEET D-2
  - PT "B" LAYOUT POINT, SEE TABLE ON SHEET D-2
  - CENTERLINE
  - 2.04 SPOT DECK OR SIDEWALK ELEVATION
  - 5.42 SPOT BOTTOM OF BAY ELEVATION
  - ⊗ WOOD PILE (REMOVE)
  - STEEL PIPE PILE FILLED WITH CONCRETE (TO REMAIN)
  - ⊗ CLEAT (REMOVE AND REINSTALL ON NEW PIER)
  - ☐ WOOD STORAGE BOX (REMOVE, REPAIR, CLEAN AND PAINT, AND REINSTALL ON NEW PIER)
  - ☐ FUEL PUMP (TO REMAIN)
  - ⊗ HOSE BID (REMOVE)
  - ⊗ WATER VALVE - DISCONNECT POINT FOR WATER DISTRIBUTION SYSTEM
  - ⊗ ELECTRICAL POLE (TO REMAIN)
  - ⊗ ELECTRICAL LAMP (REMOVE, SEE SHEET E-1.)
  - BM BENCH MARK, FOR LOCATION SEE SHEET D-2.

<b>RECORD DRAWING</b>		<b>LETTER DATED</b> 3 JUN 1987		<b>D-1</b>	
DEPARTMENT OF THE NAVY NAVAL FACILITIES ENGINEERING COMMAND					
NAVAL STATION ATLANTIC DIVISION NORFOLK, VA.					
U.S. NAVAL STATION, ROOSEVELT ROADS, P. R.					
REPAIR OF MARINA PIERS					
DEMOLITION PLAN					
APPROVED	DATE	SIZE	CODE IDENT. NO.	NAVFAC DRAWING NO.	
		F	80091	4109296	
ACTIVITY-SATISFACTORY TO	DATE	CONSTR. CONTR. NO. N62470-B1-B-1736		SHEET 2 OF 12	
		SCALE NOTED SPEC. O5-B1-1736			





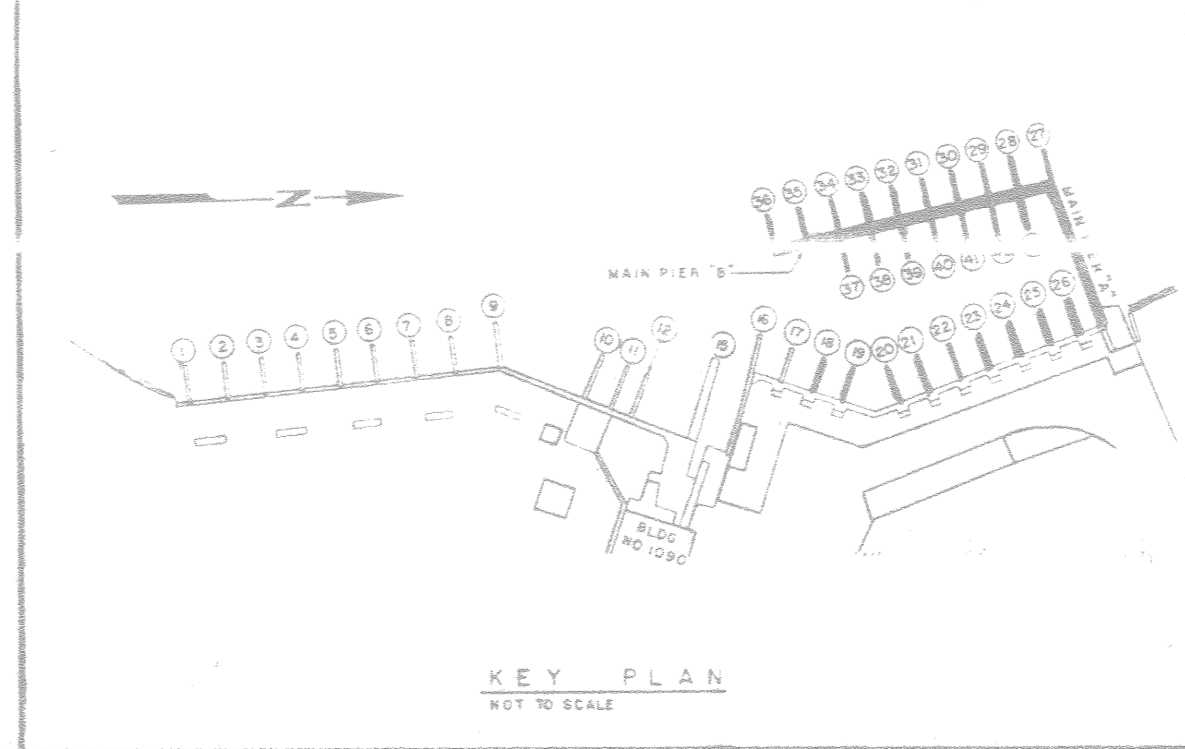
REVISIONS			
STA	DESCRIPTION	DATE	APPROVED
	DRAWING REDRAWN - GEN REVD	1/5/74	BRJ

DESCRIPTION OF HORIZONTAL CONTROL POINTS			
POINT	COORDINATES		DESCRIPTION
	X	Y	
1	16,375.919 0	16,318.2344	STEEL NAIL ON SIDEWALK
2	16,404.1667	16,404.667	STEEL NAIL ON SIDEWALK
3	16,331.3942	16,594.5229	STEEL NAIL ON SIDEWALK
4	16,448.1021	16,177.9763	STEEL NAIL ON SIDEWALK
5	16,369.1387	16,091.2980	CONCRETE MONUMENT
6	16,385.8604	15,962.4443	CONCRETE MONUMENT

DESCRIPTION OF LAYOUT POINTS			
POINT	COORDINATES		DESCRIPTION
	X	Y	
A	16,375.8286	15,829.1813	BULKHEAD LINE AND END OF SIDEWALK
B	16,355.8918	16,092.6361	BULKHEAD LINE AND $\frac{1}{2}$ PIER NO. 9
C	16,355.5812	16,094.1163	BULKHEAD LINE AND EDGE OF PIER NO. 9
D	16,421.6957	16,247.5137	BULKHEAD LINE AND $\frac{1}{2}$ PIER NO. 15
E	16,354.7522	16,268.3798	$\frac{1}{2}$ PIER NO. 15 (PIER ENDS)
F	16,436.4434	16,277.1433	$\frac{1}{2}$ PIER NO. 16 (PIER ENDS)
G	16,391.5141	16,291.2254	$\frac{1}{2}$ PIER NO. 16 (TURNING POINT)
H	16,334.6096	16,307.0700	$\frac{1}{2}$ PIER NO. 16 (PIER ENDS)
I	16,364.8369	16,300.6032	BULKHEAD LINE AND EDGE OF PIER NO. 16
J	16,400.5070	16,400.4617	TURNING POINT ON BULKHEAD LINE
K	16,329.4390	16,590.1876	BULKHEAD LINE AND EDGE OF MAIN PIER "A"
L	16,328.4846	16,594.1067	$\frac{1}{2}$ MAIN PIER "A" (PIER ENDS)
M	16,212.5342	16,549.3815	INTERSECTION $\frac{1}{2}$ MAIN PIERS "A" AND "B"
N	16,265.6812	16,321.9197	$\frac{1}{2}$ MAIN PIER "B" (PIER ENDS)

DESCRIPTION OF BM "A"  
 CHISELED TO MARK OUT WITH A 1/4" DIA. STEEL  
 AT THE NORTH END OF MAIN PIER "A" (PIER ENDS)  
 ELEV. 3.674

NOTE:  
 REFER TO THE NOTES AND  
 DETAILS SEE SHEET D-1.

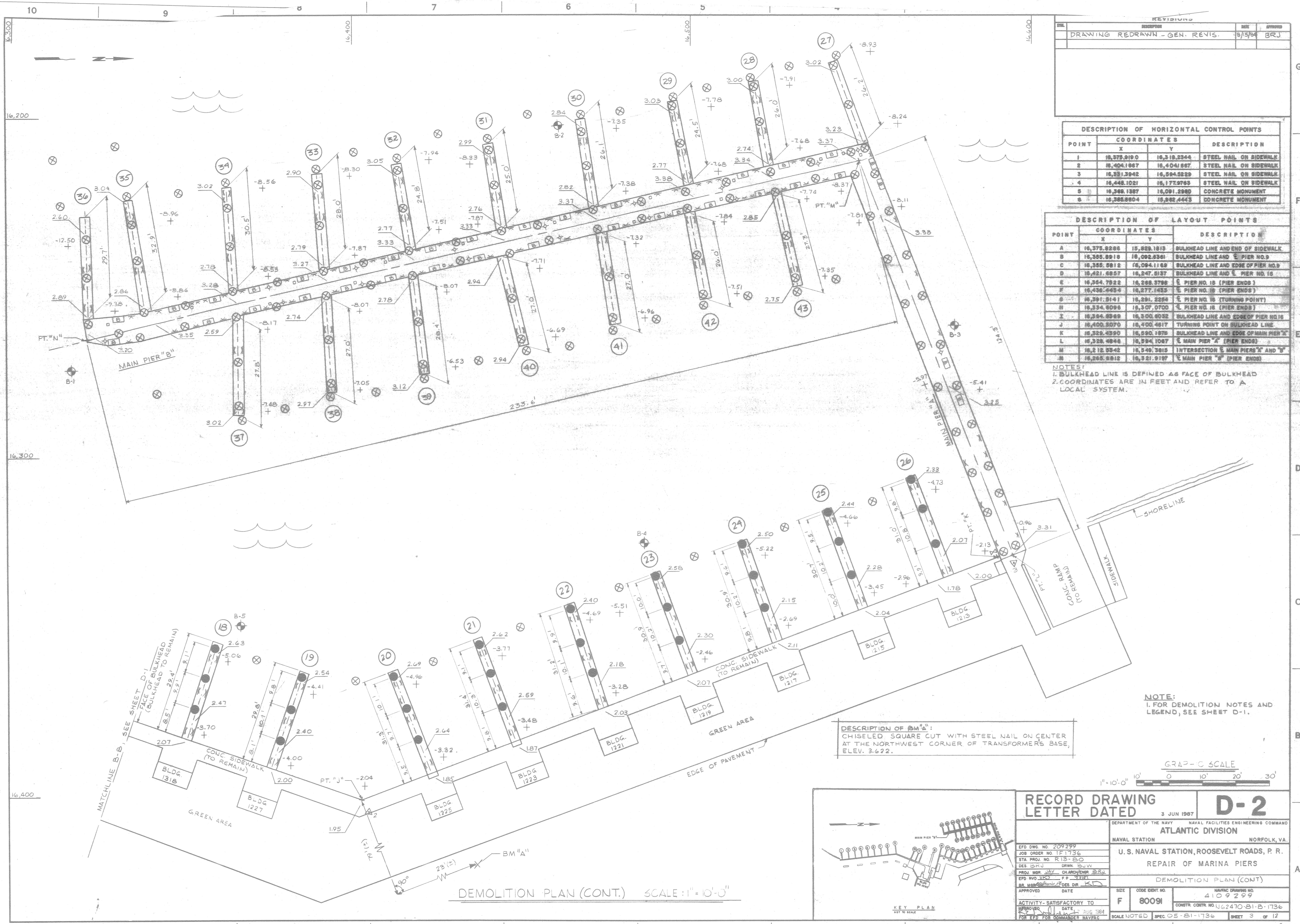


D-2 DEPARTMENT OF THE NAVY NAVAL FACILITIES ENGINEERING COMMAND ATLANTIC DIVISION NAVAL STATION NORFOLK, VA. U.S. NAVAL STATION, ROOSEVELT ROADS, P. R. REPAIR OF MARINA PIERS		EFD DWS NO. JOB ORDER NO. STA PROJ NO. DES
		PROJ. MER. EFD W/O. BR. NO. 1000 APPROVED DATE
ACTIVITY - SATISFACTORY TO APPROVED DATE FOR EFD FOR COMMANDER NAVFAC	SIZE CODE DEPT. F 80091 NAVFAC DRAWING NO. SHEET 12 OF 12	NAVFAC DRAWING NO. SHEET 12 OF 12

DEMOLITION PLAN (CONT.)

002 007





REVISIONS			
NO.	DESCRIPTION	DATE	APPROVED
1	DRAWING REDRAWN - GEN. REVIS.	8/5/84	BRJ

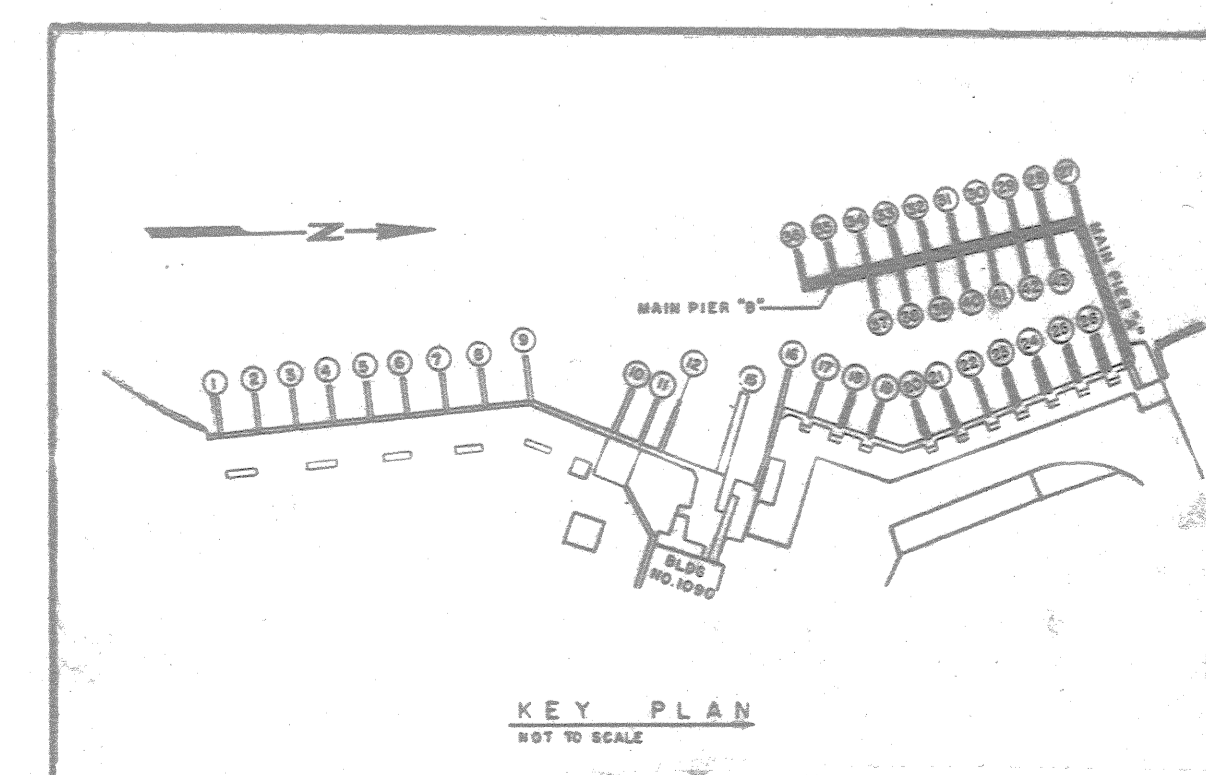
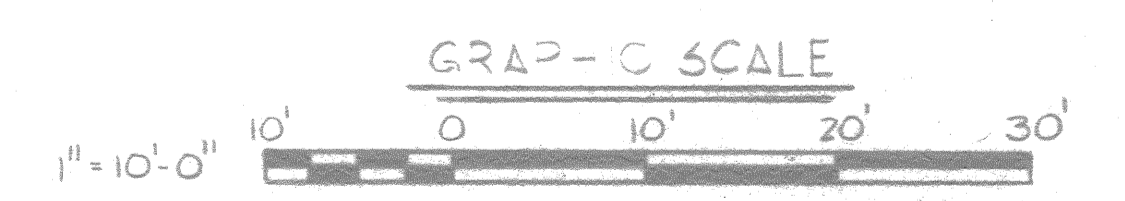
DESCRIPTION OF HORIZONTAL CONTROL POINTS			
POINT	COORDINATES		DESCRIPTION
	X	Y	
1	16,375.9190	16,319.2344	STEEL NAIL ON SIDEWALK
2	16,404.1867	16,404.667	STEEL NAIL ON SIDEWALK
3	16,381.3942	16,594.8229	STEEL NAIL ON SIDEWALK
4	16,448.1021	16,177.9783	STEEL NAIL ON SIDEWALK
5	16,368.1387	16,091.2980	CONCRETE MONUMENT
6	16,368.8604	16,882.4443	CONCRETE MONUMENT

DESCRIPTION OF LAYOUT POINTS			
POINT	COORDINATES		DESCRIPTION
	X	Y	
A	16,375.9286	16,829.1819	BULKHEAD LINE AND END OF SIDEWALK
B	16,385.8918	16,092.8361	BULKHEAD LINE AND PIER NO. 3
C	16,385.8912	16,094.1169	BULKHEAD LINE AND EDGE OF PIER NO. 3
D	16,421.8887	16,247.8137	BULKHEAD LINE AND PIER NO. 15
E	16,364.7822	16,268.9786	P. PIER NO. 15 (PIER ENDS)
F	16,436.4434	16,277.1433	P. PIER NO. 16 (PIER ENDS)
G	16,391.5141	16,281.2254	P. PIER NO. 16 (TURNING POINT)
H	16,334.8098	16,307.0700	P. PIER NO. 16 (PIER ENDS)
I	16,384.8969	16,300.8032	BULKHEAD LINE AND EDGE OF PIER NO. 16
J	16,400.5070	16,400.4617	TURNING POINT ON BULKHEAD LINE
K	16,328.4390	16,590.1876	BULKHEAD LINE AND EDGE OF MAIN PIER "A"
L	16,328.4396	16,594.1027	P. MAIN PIER "A" (PIER ENDS)
M	16,212.8942	16,549.3815	INTERSECTION P. MAIN PIERS "A" AND "B"
N	16,268.8612	16,321.9187	P. MAIN PIER "B" (PIER ENDS)

NOTES:  
 1. BULKHEAD LINE IS DEFINED AS FACE OF BULKHEAD  
 2. COORDINATES ARE IN FEET AND REFER TO A LOCAL SYSTEM.

DESCRIPTION OF BM "A":  
 CHISELED SQUARE CUT WITH STEEL NAIL ON CENTER AT THE NORTHWEST CORNER OF TRANSFORMER'S BASE, ELEV. 3.622.

NOTE:  
 1. FOR DEMOLITION NOTES AND LEGEND, SEE SHEET D-1.



<b>RECORD DRAWING</b>		<b>D-2</b>	
LETTER DATED 3 JUN 1987		NAVAL FACILITIES ENGINEERING COMMAND	
DEPARTMENT OF THE NAVY		ATLANTIC DIVISION	
NAVAL STATION		NORFOLK, VA.	
U. S. NAVAL STATION, ROOSEVELT ROADS, P. R.			
REPAIR OF MARINA PIERS			
DEMOLITION PLAN (CONT.)			
APPROVED	DATE	SIZE	CODE BENT. NO.
ACTIVITY - SATISFACTORY TO	DATE	F	80091
APPROVED	DATE	CONSTR. CONTR. NO.	NAVIC DRAWING NO.
FOR EPD FOR COMMANDER NAVFAC	DATE	U62470-B1-B-1736	4109299
SCALE NOTED	SPEC.	OS-B1-1736	SHEET 3 OF 12

DEMOLITION PLAN (CONT.) SCALE: 1" = 10'-0"